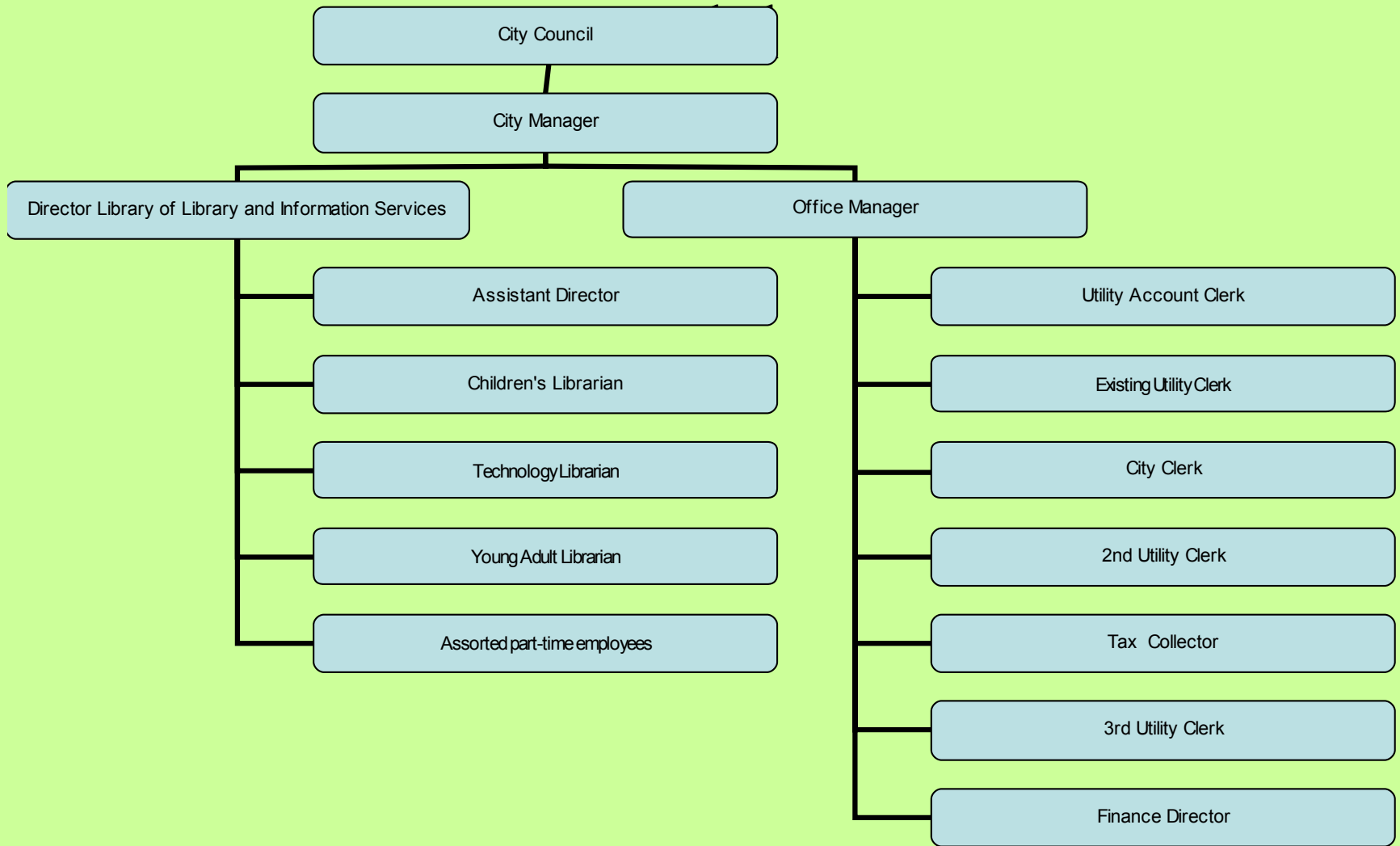


# Library and Information Services

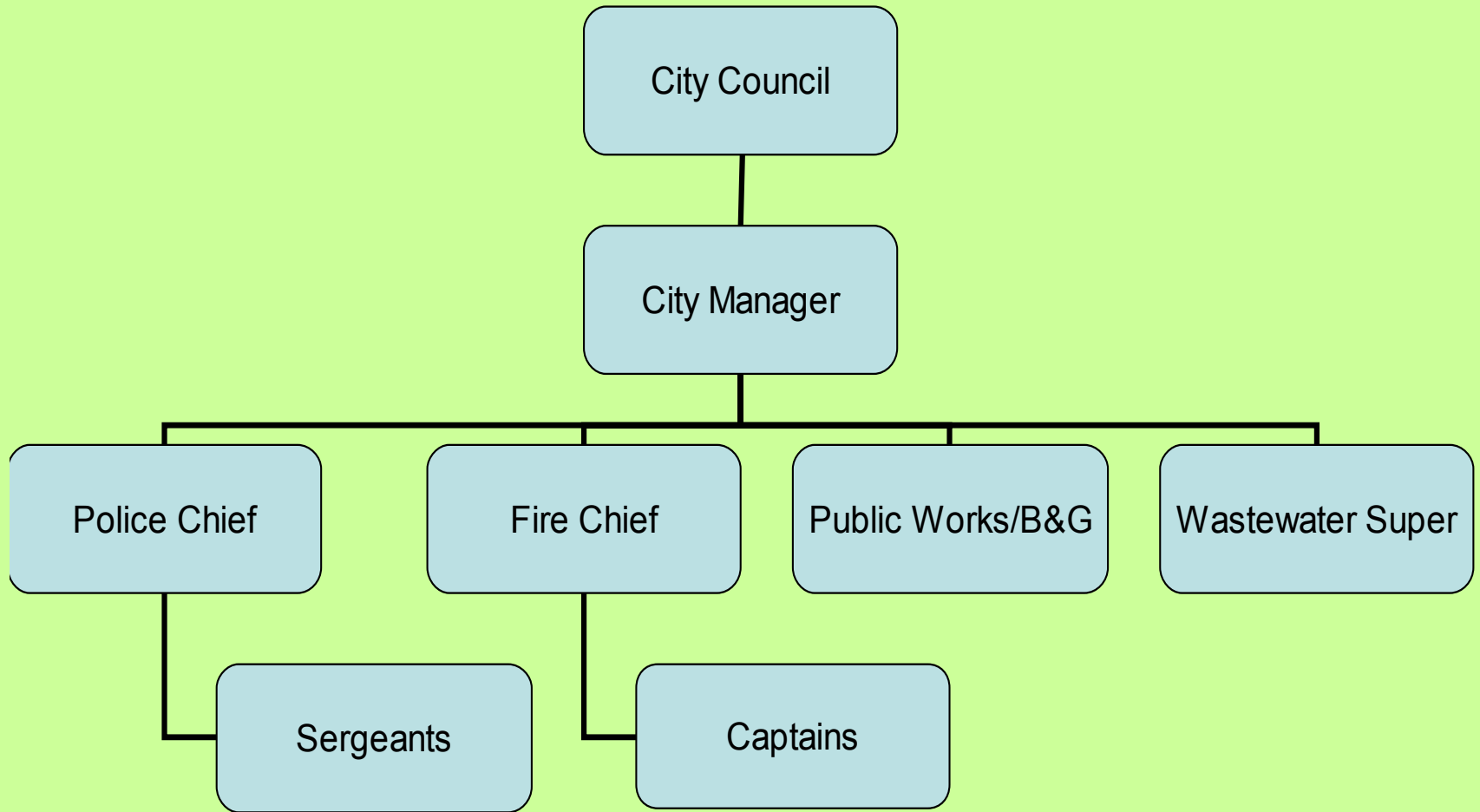


## Director of Library and Information Services/Office Manager

<b>Current Structure</b>	<b>\$ 167,800</b>
Library Director	\$ 45,000
Library Assistant Director	\$ 31,400
Administrative Assistant	\$ 30,000
Position to be redefined (estimated)	\$ 27,000
Part-time Registrar	\$ 10,500
Dispatcher	\$ 23,900
<b>Proposed Structure</b>	<b>\$ 172,100</b>
Director of Library and Information Services	\$ 50,000
Library Assistant Director	\$ 33,100
Office Manager	\$ 36,000
Utility Clerk #2 (fourth step)	\$ 26,500
Utility Clerk #3 (fourth step)	\$ 26,500
Surplus(Deficit)	\$ (4,300)

- Negotiate changes with four positions
- Internal posting of four positions
- October 1, 2006 Implementation

# Horizontal Model



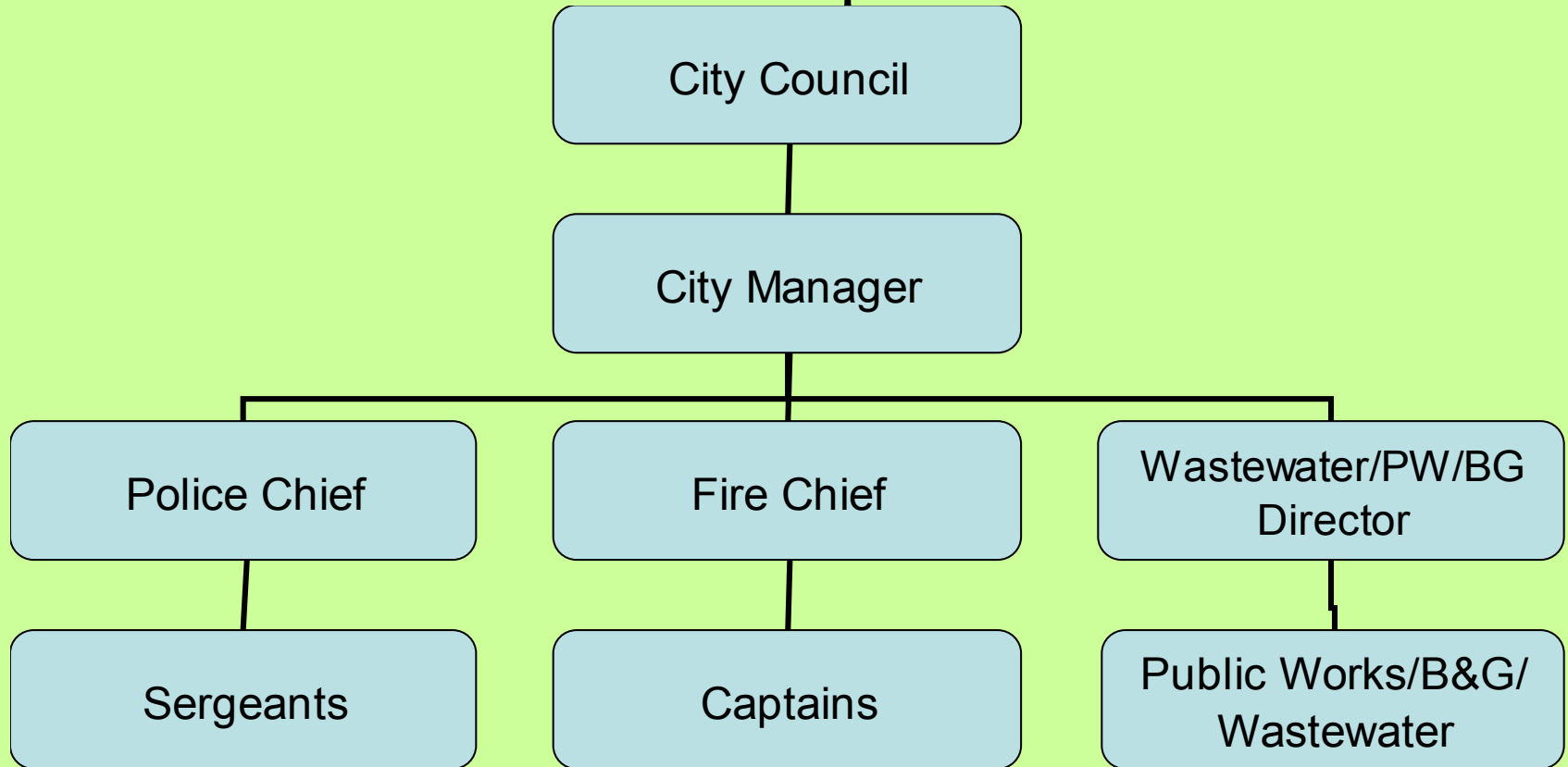
## Redefine Police & Fire Chiefs, Public Works Supervisor

<b>Current Structure</b>	<b>\$ 191,900</b>
Director of City Services	\$ 53,000
Police Chief	\$ 50,000
Fire Chief	\$ 51,900
Public Works Supervisor	\$ 37,000
<b>Proposed Structure</b>	<b>\$ 170,400</b>
Police Chief (redefined)	\$ 58,300
Fire Chief (redefined)	\$ 56,300
Public Works Director (redefined)	\$ 55,800
Surplus(Deficit)	\$ 21,500

- Redefine three positions
- Eliminate one position
- Internally post three positions

October 1, 2006 Implementation

# Redefined Police/Fire Chiefs & Waste Water Superintendent



# Redefine Police & Fire Chiefs, Wastewater Superintendent

<b>Current Structure</b>	\$ 242,000
Director of City Services	\$ 53,000
Police Chief	\$ 50,000
Fire Chief	\$ 51,900
Wastewater Superintendent	\$ 55,100
Wastewater position to be redefined (estimated)	\$ 32,000
<b>Proposed Structure</b>	\$ 225,100
Wastewater PW/BG Director (redefined)	\$ 61,000
Police Chief (redefined)	\$ 58,300
Fire Chief (redefined)	\$ 56,300
Chief Operator	\$ 41,000
Part time help	\$ 8,500
Surplus(Deficit)	\$ 16,900

- Eliminate one positions
- Modify four positions
- Negotiate changes to one position
- Internally post four positions

October 1, 2006 Implementation