



**GARDINER CITY COUNCIL
AGENDA ITEM INFORMATION SHEET**



Meeting Date	10/14/2020	Department	Planning/Economic Dev
Agenda Item	4.b Discussion with Patrick Adams, Active Regional Transportation Planner at Maine Department of Transportation Regarding the Cobbossee Trail Project		
Est. Cost	n/a		

Background Information

Patrick Adams, Active Regional Transportation Planner at MeDOT Regarding the Cobbossee Trail Project will be present to discuss the cost increases for the project.

Mr. Adams will have a powerpoint at the meeting. Please see attached spreadsheet with financial information detailed. The original council resolution expending a local match to fund the project is also attached.

Requested Action	n/a
City Manager and/or Finance Review	n/a
Council Vote/ Action Taken	
Departmental Follow-Up	

City Clerk Use Only	1 st Reading _____	Advertised _____	EFFECTIVE DATE _____
	2 nd Reading _____	Advertised _____ w/in 15 Days	
	Final to Dept _____	Updated Book _____	Online _____

WIN	Name	Description	Status	Federal Funding Allocation	State Funding Allocation	Local Funding Allocation	Private Funding Cable Co. & Water District	Total Funding Allocation	Expenditures To Date	Remaining Balance
13344.00	GARDINER, COBOSSEE STREAM	Cobboosee Stream Trail from Kennebec River Rail Trail to Rt. 126.	Closed	\$ 115,359.95	\$ 839.99	\$ 28,000.00	\$ -	\$ 144,199.94	\$ 144,199.94	\$ -
				<i>closed approximately 4 yrs ago - all paid</i>						
13344.10	GARDINER COBBOSSEE TRAIL (Phase 2)	PE/ROW/CONSTRICE of an off-system 10' wide multiuse BikePed trail from 50-foot west of the proposed Bridge Street Highway bridge to Winter Street including improvements to a rail trestle bridge over the stream and pathway along Summer St.	Active	\$ 727,804.15	\$ -	\$ 181,951.04	\$ -	\$ 909,755.19	\$ 12,614.41	\$ 897,140.78
				<i>Chapman's to trestle - This is primary discussion point</i>						
18736.01 (F)	GARDINER, MAINE MULTI USE PATH (Phase 1)	Multi-use path beginning at KRRT crossing Cobboosee Stream with a pedestrian bridge to Arcade Road and extending on Arcade 50-foot west of the Bridge Street (Rte 201) highway bridge reconstruction project.	Active	\$ 748,490.65	\$ 305,583.20	\$ 263,518.45	\$ 6,000.00	\$ 1,323,592.30	\$ 1,239,402.99	\$ 84,189.31
				<i>Spent to date</i>						
				<i>Balance that is expected to be spent</i>						
TOTALS				\$ 1,591,654.75	\$ 306,423.19	\$ 473,469.49	\$ 6,000.00	\$ 2,377,547.43	\$ 1,396,217.34	\$ 981,330.09

* Gardiner's Current Commitments @ \$ 250,403.48
 20% (w/out original project) *+ 16,837.86 if 84k is expended*
 09/17/16
 Commitment minus already expended leaves this amount still available *= 16,837.86*

** Path is under bridge but not around corner to Chapman's*

City of Gardiner, Maine
COUNCIL RESOLUTION

WHEREAS, the City of Gardiner wishes to expend a local match to fund the Cobbosee Trail Project; and

WHEREAS, the City of Gardiner has approved in its capital improvement budget \$418,410 to cover the local match portion \$333,000 in principal, \$85,410 toward interest payments; and

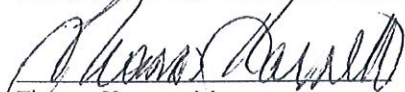
NOW THEREFORE, be it resolved by the Council of the City of Gardiner that the City Manger:

- 1) Is authorized to expend up to \$418,410 as local match for the Cobbossee Trail Projects \$333,000 toward the project itself, \$85,410 toward interest payments;
- 2) Is authorized to enter into a project agreement with Maine DOT, and to create the Cobbossee Trail Steering Committee.
- 3) Is authorized to make assurances on behalf of the City of Gardiner required as part of such applications, and
- 4) Is authorized and directed to carry out the duties and responsibilities for implementing said program(s), consistent with the Charter of the City of Gardiner and the laws and regulations governing planning and implementation of community development programs in the State of Maine.

DATE ENACTED: 4/7/16

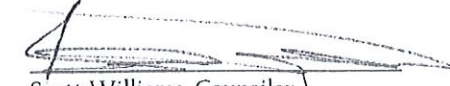
Municipal Seal

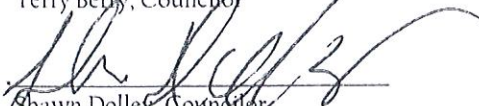
AUTHORIZED SIGNATURES:

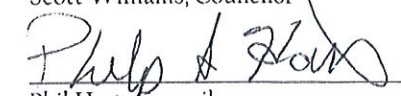

Thomas Harnett, Mayor

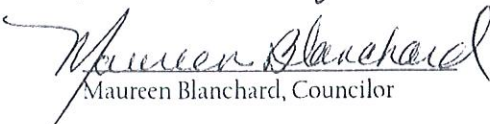

Patricia Hart, Councilor


Terry Berry, Councilor


Scott Williams, Councilor


Shawn Dolley, Councilor


Phil Hart, Councilor


Maureen Blanchard, Councilor


Jan Ault, Councilor

Cobbossee Corridor

<u>Date</u>	<u>Description-----</u>	<u>Amount</u>
FY17	Sewall Grant	50,000
FY17	Healthy Main St Grant	4,126
FY17	Transfer	27,895
FY18	Transfer	27,895
FY19	Transfer	27,895
FY20	Transfer	27,895
FY21	Transfer	27,895
	Total Revenue	193,601

<u>Date</u>	<u>Vendor-----</u>	<u>Description-----</u>	<u>Amount</u>
01/20/17	00233 Kennebec Cou	152 Summer	57.50
01/20/17	00000 Dirigo Title	152 Summer	100.00
01/20/17	00000 Pauline E. O	152 Summer	7,470.42
06/23/17	01142 MILONE & MAC	COBBOSSEE STREAM TRAIL	1,854.00
07/19/17	01142 MILONE & MAC	COBBOSSEE STREAM TRAIL	2,865.10
07/31/17	01142 MILONE & MAC	COBBOSSEE STREAM TRAIL	3,599.53
08/18/17	01142 MILONE & MAC	COBBOSSEE STREAM TRAIL	3,893.50
09/21/17	01142 MILONE & MAC	COBBOSSEE STREAM TRAIL	10,583.03
11/03/17	01142 MILONE & MAC	COBBOSSEE STREAM TRAIL	989.50
01/25/18	01142 MILONE & MAC	COBBOSSEE STREAM TRAIL	2,924.15
02/14/18	01142 MILONE & MAC	COBBOSSEE STREAM TRAIL	617.85
04/19/18	01142 MILONE & MAC	COBBOSSEE STREAM TRAIL	1,745.34
07/26/18	00640 Treasurer, S	MULTI USE PATH	21,484.77
07/26/18	00640 Treasurer, S	MULTI USE PATH	50,000.00
08/30/18	01142 MILONE & MAC	COBBOSSEE STREAM TRAIL	1,400.00
10/26/18	01142 MILONE & MAC	COBBOSSEE STREAM TRAIL	15,066.65
10/26/18	01142 MILONE & MAC	COBBOSSEE STREAM TRAIL	2,084.43
		Total Expenses	126,735.77

Available	66,865.23
------------------	------------------

Cobbossee Trail

Sources	Project Budget	Committed	Balance	City Share
State and Municipal Gov't				
City Share	\$381,528	\$333,000	\$48,528	
Sewall Grant		\$50,000	-\$50,000	
Healthy Main Street Grant		\$4,126	-\$4,126	
Bicycle Coalition of Maine (GMS Holds the funds)		\$12,300		
DOT Share (Both WIN's)	\$1,526,111	\$1,526,111	\$0	
Total State and Local Sources	\$1,907,639	\$1,925,537	-\$17,898	
Uses				
DOT project - Trail Head to 50' west of Bridge St. - WIN 18736.10				
Design	\$145,892	\$145,892	\$0	\$29,178
ROW	\$3,588	\$3,588	\$0	\$718
Construction	\$1,108,112	\$1,108,112	\$0	\$221,622
Construction Engineering	\$60,000	\$60,000	\$0	\$12,000
	\$1,317,592	\$1,317,592	\$0	\$263,518
LPA project - 50' west of Bridge St. to Water St. - WIN 13344.10				
Design	\$150,000	\$150,000	\$0	\$30,000
ROW	\$30,000	\$30,000	\$0	\$6,000
Construction*	\$340,047	\$340,047	\$0	\$68,009
Construction Engineering	\$70,000	\$70,000	\$0	\$14,000
	\$590,047	\$590,047	\$0	\$118,009
Total Expenses Both Projects	\$1,907,639	\$1,907,639	\$0	\$381,528

Christine Landes

From: Keezer, Brian <Brian.Keezer@maine.gov>
Sent: Thursday, October 1, 2020 2:37 PM
To: Adams, Patrick
Cc: Christine Landes
Subject: Extension of Kennebec Rail Trail WIN 18736.10
Attachments: WIN18736.10_ArcadeTrail Extension_Plans_FINAL_6-18-20.pdf; WIN18736.10_ArcadeTrail Extension_Estimate_20200618.pdf; MDOT Gardiner Trail Extension Contractor Estimate.pdf

Patrick,

I wanted to give you an update on where things currently stand with the current rail trail project both financially and construction wise. For the current project that is ending just after the Bridge St. bridge, things are looking pretty good financially. We currently have approximately \$85k remaining for funding and after speaking with the Resident Candy Thompson, she thinks we should be able to finish the current piece and remain within budget. To bring you up to speed on total costs, the modification #2 to the original agreement that was executed in November of 2019 reflects the total project cost at \$1,317,592.30. Gardiner's share of that amount consists of \$263,518.46. So we appear to be right on track to be on budget when it's all said and done so it's likely that 100% of the \$263k local share will be required.

The portion of the trail that would connect to where it is currently ending and continue to Water St. (plans are attached) was supposed to be completed under the Phase II trail project and continue across the railroad trestle and then back out to Water St. As you know we received an estimate for over \$1 million to rehab the trestle, which in turn likely makes the Phase II project too costly. As a result we asked Reed and Reed for a price to complete the trail and bring it out to Water St. as the attached plans show. I have attached the estimate that the Designer (Stantec) calculated based off the bid prices (attached as "WIN18736.10_ArcadeTrail Extension_Estimate_20200618") as well as the estimate from Reed and Reed (attached as "MDOT Gardiner Trail Extension Contractor Estimate"). To summarize the costs, Stantec estimated a price of \$63,791 and Reed and Reed estimated a price of \$236,512. Since Reed and Reed's price is nearly 4 times more than what Stantec had estimated, we feel that this is much too high and should be rejected. As a result we'll need a plan in order to connect the trail to Water St.

As we discussed previously this could be accomplished by putting the attached plans out to bid as a standalone project or see if the City could potentially build it with their own forces. I'm not sure how the funding would work if we put it put to bid. That would be something that would need to be addressed before that decision was made. Or is there still a potential for some type of modified Phase II project where the trail is extended, but stops short of the trestle. One thing to keep in mind is that rights were acquired for the trail extension from the property owner at the corner of Arcade and Water St. so there is generally a time limit as to how long the rights are good for before we have to go back to do things over and reappraise the property. So the sooner we can come to a resolution on this, the better off we'll be. Please let me know if you have any questions or need any additional info.

Thanks - Brian

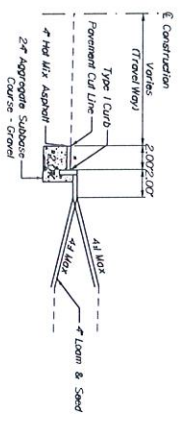
Brian Keezer, P.E.
Multimodal Project Manager

MaineDOT
16 State House Station
Augusta, ME 04333-0016
Tel.: (207) 624-3612
Fax: (207) 624-3101



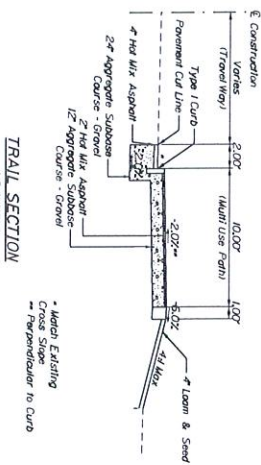
Match Existing Cross Slope

Sta 286+65.00, Rt. to Sta. 287+39.87, Rt.



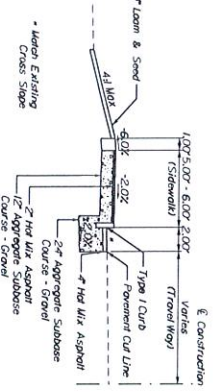
Match Existing Cross Slope

Sta 286+23.00, Rt. to Sta. 286+65.00, Rt.



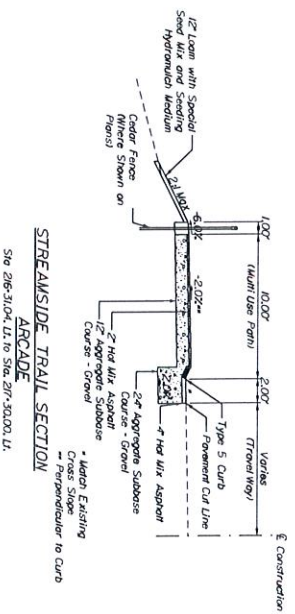
Match Existing Cross Slope

Sta 174+20.00, Lt. to Sta. 185+54.00, Lt.



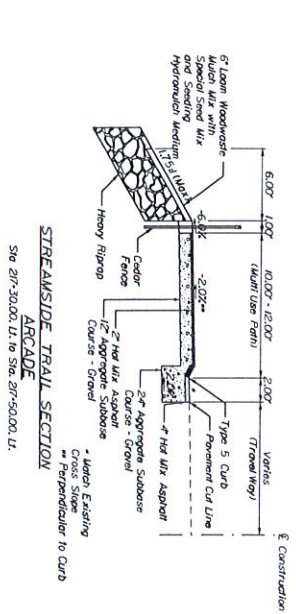
Match Existing Cross Slope

Sta 174+20.00, Lt. to Sta. 185+54.00, Lt.



Match Existing Cross Slope

Sta 216+31.04, Lt. to Sta. 217+50.00, Lt.



Match Existing Cross Slope

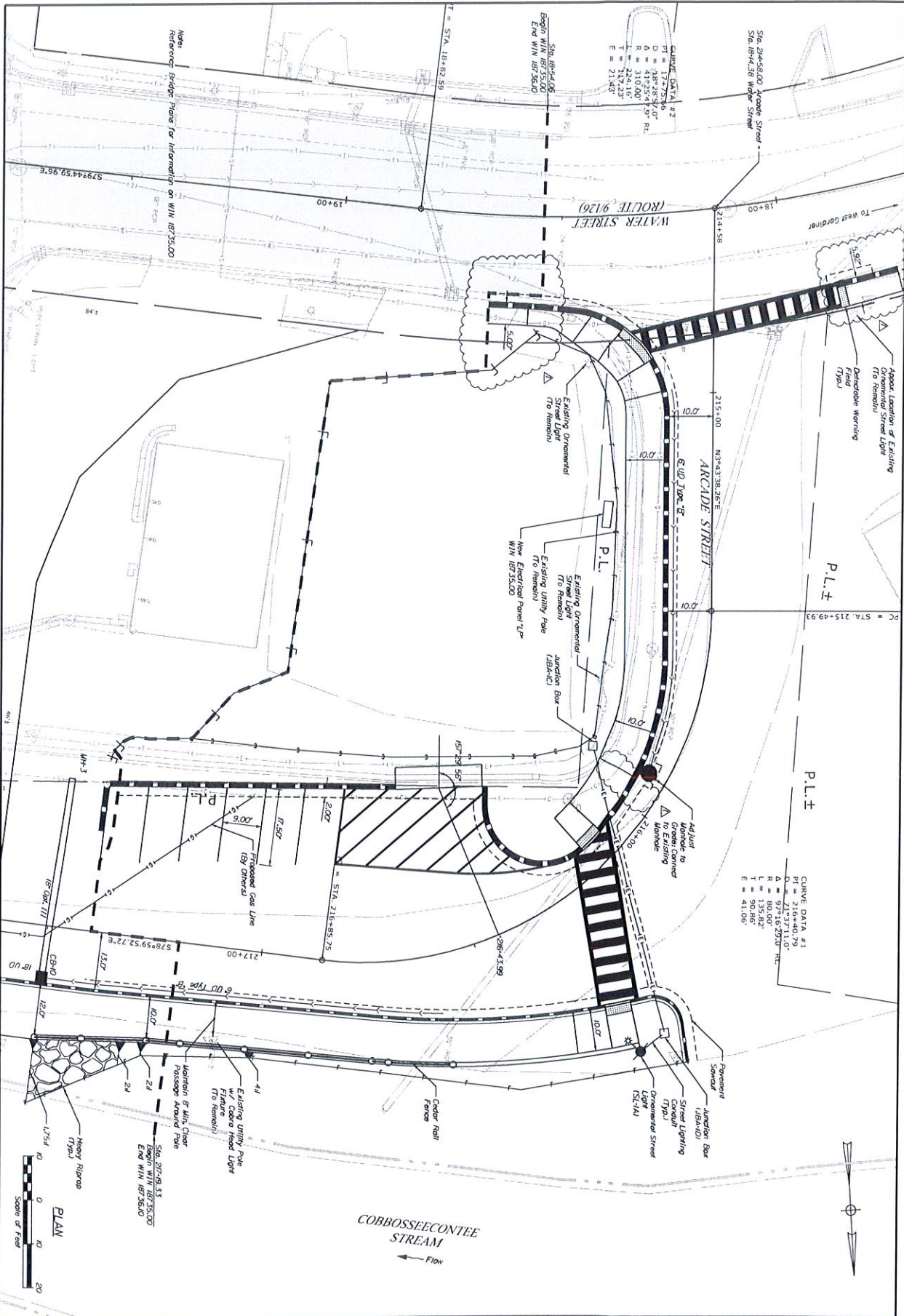
Sta 217+50.00, Lt. to Sta. 217+50.00, Lt.

SHEET NUMBER
2
OF 9

GARDINER
ARCADE ST \ WATER ST.
TYPICAL SECTIONS

PROJ. MANAGER	B. KEELER	BY	DATE
DESIGN-DETAILED	R.P.	C.B.	APR 2020
CHECKED-REVIEWED	LM		APR 2020
DESIGN-DETAILED			
CHECKED-REVIEWED			
REVISIONS 1			
REVISIONS 2			
REVISIONS 3			
REVISIONS 4			
FIELD CHANGES			

STATE OF MAINE DEPARTMENT OF TRANSPORTATION	
1873610	SIGNATURE
WIN	P.E. NUMBER
1876.10	DATE
MULTIMODAL PLANS	

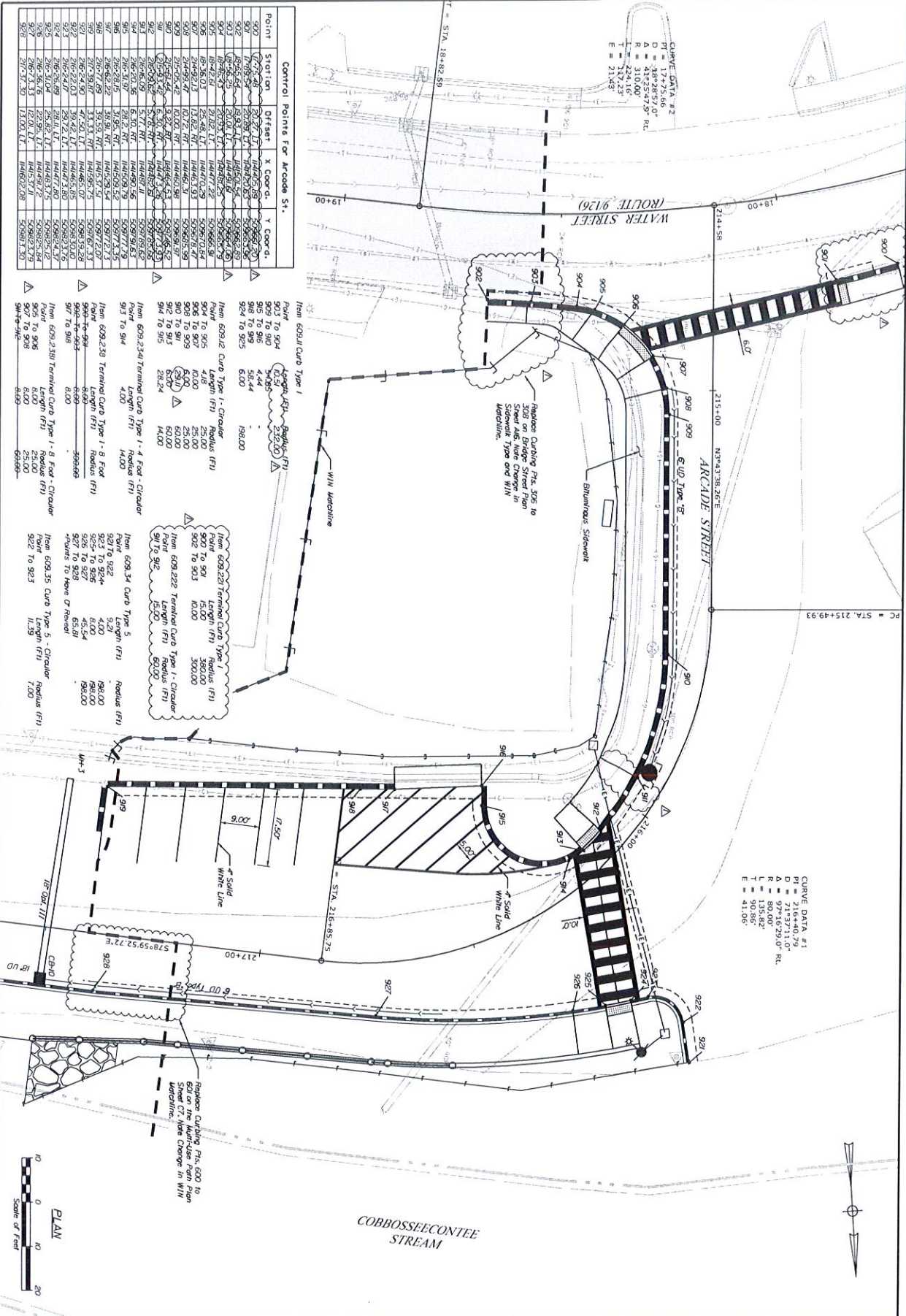


3A
 SHEET NUMBER
 OF 9

GARDINER
 ARCADE ST \ WATER ST.
 GENERAL PLAN

PROJ. MANAGER	BL. KEEPER	BY	DATE
DESIGN DETAILER	PLP	E.B.	APR 2020
CHECKED BY	REVIEWS	LEW	APR 2020
DESIGN DETAILER	DESIGN		
DESIGN DETAILER	DESIGN		
REVISIONS 1	CURSING UPDATES		06/17/20
REVISIONS 2			
REVISIONS 3			
REVISIONS 4			
FIELD CHECKS			

STATE OF MAINE DEPARTMENT OF TRANSPORTATION
1873610
WIN 1876.10
MULTIMODAL PLANS



Control Points for Arcade St.

Point	Station	Offset	X Coord.	Y Coord.
900	172.75	6.66	114470.88	55982.20
901	172.75	6.66	114470.88	55982.20
902	172.75	6.66	114470.88	55982.20
903	172.75	6.66	114470.88	55982.20
904	172.75	6.66	114470.88	55982.20
905	172.75	6.66	114470.88	55982.20
906	172.75	6.66	114470.88	55982.20
907	172.75	6.66	114470.88	55982.20
908	172.75	6.66	114470.88	55982.20
909	172.75	6.66	114470.88	55982.20
910	172.75	6.66	114470.88	55982.20
911	172.75	6.66	114470.88	55982.20
912	172.75	6.66	114470.88	55982.20
913	172.75	6.66	114470.88	55982.20
914	172.75	6.66	114470.88	55982.20
915	172.75	6.66	114470.88	55982.20
916	172.75	6.66	114470.88	55982.20
917	172.75	6.66	114470.88	55982.20
918	172.75	6.66	114470.88	55982.20
919	172.75	6.66	114470.88	55982.20
920	172.75	6.66	114470.88	55982.20
921	172.75	6.66	114470.88	55982.20
922	172.75	6.66	114470.88	55982.20
923	172.75	6.66	114470.88	55982.20
924	172.75	6.66	114470.88	55982.20
925	172.75	6.66	114470.88	55982.20
926	172.75	6.66	114470.88	55982.20
927	172.75	6.66	114470.88	55982.20
928	172.75	6.66	114470.88	55982.20

From 609.111 Curb Type 1

Point	Station	Offset	X Coord.	Y Coord.
903	172.75	6.66	114470.88	55982.20
904	172.75	6.66	114470.88	55982.20
905	172.75	6.66	114470.88	55982.20
906	172.75	6.66	114470.88	55982.20
907	172.75	6.66	114470.88	55982.20
908	172.75	6.66	114470.88	55982.20
909	172.75	6.66	114470.88	55982.20
910	172.75	6.66	114470.88	55982.20
911	172.75	6.66	114470.88	55982.20
912	172.75	6.66	114470.88	55982.20
913	172.75	6.66	114470.88	55982.20
914	172.75	6.66	114470.88	55982.20
915	172.75	6.66	114470.88	55982.20
916	172.75	6.66	114470.88	55982.20
917	172.75	6.66	114470.88	55982.20
918	172.75	6.66	114470.88	55982.20
919	172.75	6.66	114470.88	55982.20
920	172.75	6.66	114470.88	55982.20
921	172.75	6.66	114470.88	55982.20
922	172.75	6.66	114470.88	55982.20
923	172.75	6.66	114470.88	55982.20
924	172.75	6.66	114470.88	55982.20
925	172.75	6.66	114470.88	55982.20
926	172.75	6.66	114470.88	55982.20
927	172.75	6.66	114470.88	55982.20
928	172.75	6.66	114470.88	55982.20

From 609.230 Terminal Curb Type 1 - 8 Foot

Point	Station	Offset	X Coord.	Y Coord.
903	172.75	6.66	114470.88	55982.20
904	172.75	6.66	114470.88	55982.20
905	172.75	6.66	114470.88	55982.20
906	172.75	6.66	114470.88	55982.20
907	172.75	6.66	114470.88	55982.20
908	172.75	6.66	114470.88	55982.20
909	172.75	6.66	114470.88	55982.20
910	172.75	6.66	114470.88	55982.20
911	172.75	6.66	114470.88	55982.20
912	172.75	6.66	114470.88	55982.20
913	172.75	6.66	114470.88	55982.20
914	172.75	6.66	114470.88	55982.20
915	172.75	6.66	114470.88	55982.20
916	172.75	6.66	114470.88	55982.20
917	172.75	6.66	114470.88	55982.20
918	172.75	6.66	114470.88	55982.20
919	172.75	6.66	114470.88	55982.20
920	172.75	6.66	114470.88	55982.20
921	172.75	6.66	114470.88	55982.20
922	172.75	6.66	114470.88	55982.20
923	172.75	6.66	114470.88	55982.20
924	172.75	6.66	114470.88	55982.20
925	172.75	6.66	114470.88	55982.20
926	172.75	6.66	114470.88	55982.20
927	172.75	6.66	114470.88	55982.20
928	172.75	6.66	114470.88	55982.20

From 609.354 Curb Type 5

Point	Station	Offset	X Coord.	Y Coord.
903	172.75	6.66	114470.88	55982.20
904	172.75	6.66	114470.88	55982.20
905	172.75	6.66	114470.88	55982.20
906	172.75	6.66	114470.88	55982.20
907	172.75	6.66	114470.88	55982.20
908	172.75	6.66	114470.88	55982.20
909	172.75	6.66	114470.88	55982.20
910	172.75	6.66	114470.88	55982.20
911	172.75	6.66	114470.88	55982.20
912	172.75	6.66	114470.88	55982.20
913	172.75	6.66	114470.88	55982.20
914	172.75	6.66	114470.88	55982.20
915	172.75	6.66	114470.88	55982.20
916	172.75	6.66	114470.88	55982.20
917	172.75	6.66	114470.88	55982.20
918	172.75	6.66	114470.88	55982.20
919	172.75	6.66	114470.88	55982.20
920	172.75	6.66	114470.88	55982.20
921	172.75	6.66	114470.88	55982.20
922	172.75	6.66	114470.88	55982.20
923	172.75	6.66	114470.88	55982.20
924	172.75	6.66	114470.88	55982.20
925	172.75	6.66	114470.88	55982.20
926	172.75	6.66	114470.88	55982.20
927	172.75	6.66	114470.88	55982.20
928	172.75	6.66	114470.88	55982.20

CURVE DATA #2
 PI = 172.75+6.66
 D = 132.00'
 R = 310.00'
 E = 21.42'

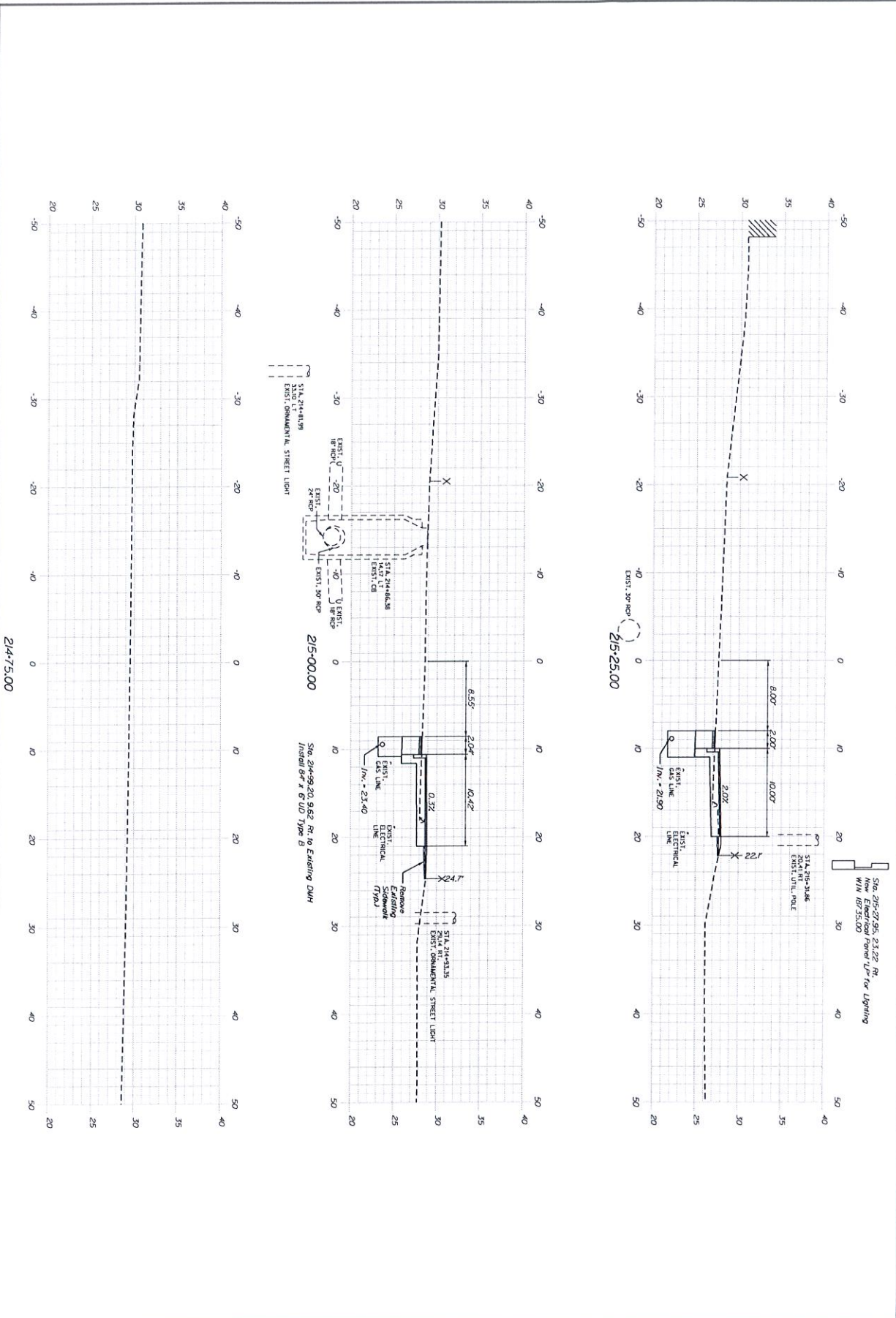
CURVE DATA #1
 PI = 172.75+6.66
 D = 71.53+71.10'
 R = 97.16+79.04'
 T = 90.86'
 E = 41.06'



PLANN
 SHEET NUMBER
 4A
 OF 9

PROJ. MANAGER	B. KEEPER	BY	DATE
DESIGN-DETAILED	PLP	EJB	APR 2020
CHECKED-REVIEWED	LEW		APR 2020
DESIGN-DETAILED			
REVISIONS 1	CURBING UPDATES		06/17/20
REVISIONS 2			
REVISIONS 3			
REVISIONS 4			
FIELD CHANGES			

STATE OF MAINE DEPARTMENT OF TRANSPORTATION
1873610
WIN 1876.10 MULTIMODAL PLANS



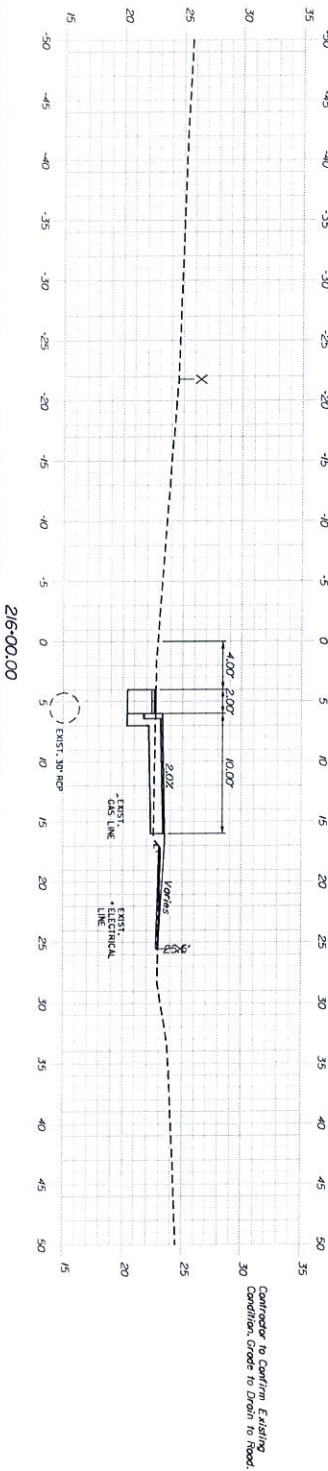
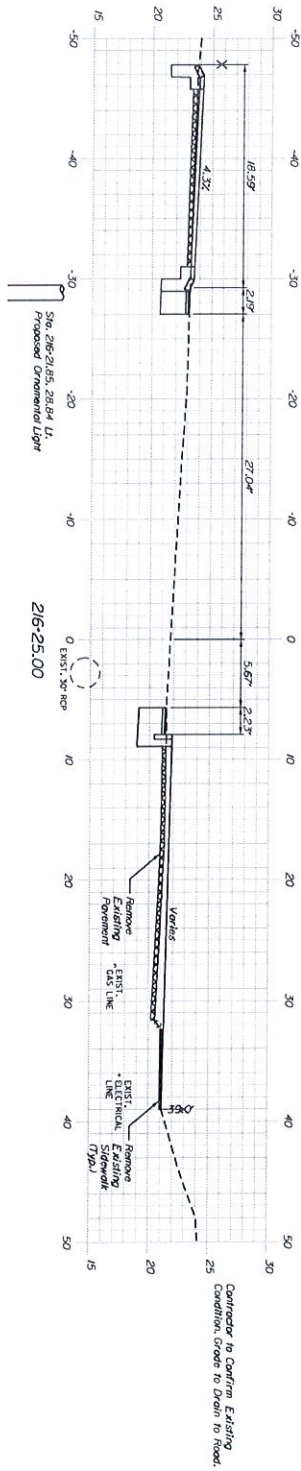
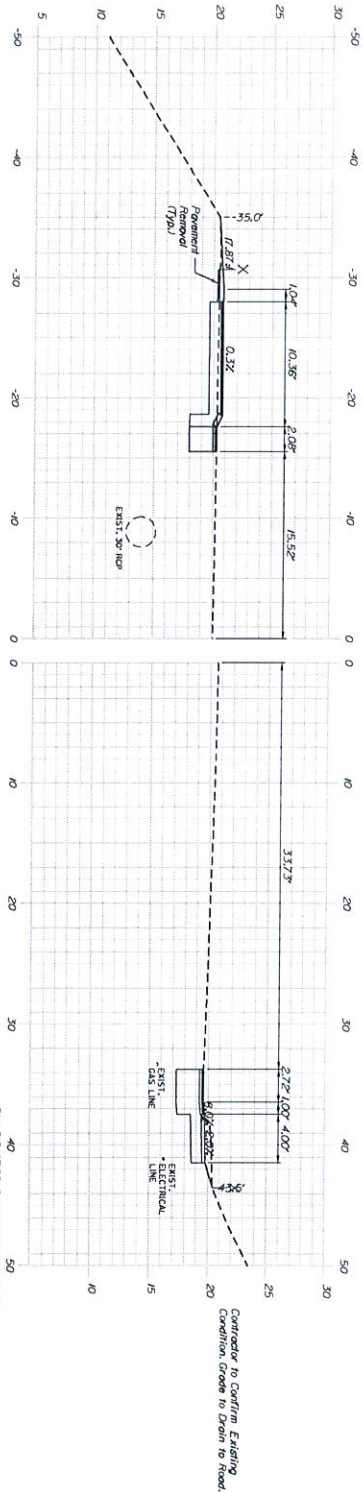
SHEET NUMBER 5	GARDINER ARCADE ST \ WATER ST. CROSS SECTIONS		PROJ. MANAGER	B. KEEFER	BY	DATE	SIGNATURE
			CHECKED-REVIEWED	P.P.	E.B.	APR 2020	
OF 9			DESIGN-DETAILED	LLW		APR 2020	P.E. NUMBER
			REVISIONS 1				DATE
			REVISIONS 2				
			REVISIONS 3				
		FIELD CHANGES					

STATE OF MAINE
DEPARTMENT OF TRANSPORTATION

1873610

WIN
1876.10 MULTIMODAL PLANS

Sta. 214+75.00 to Sta. 215+25.00

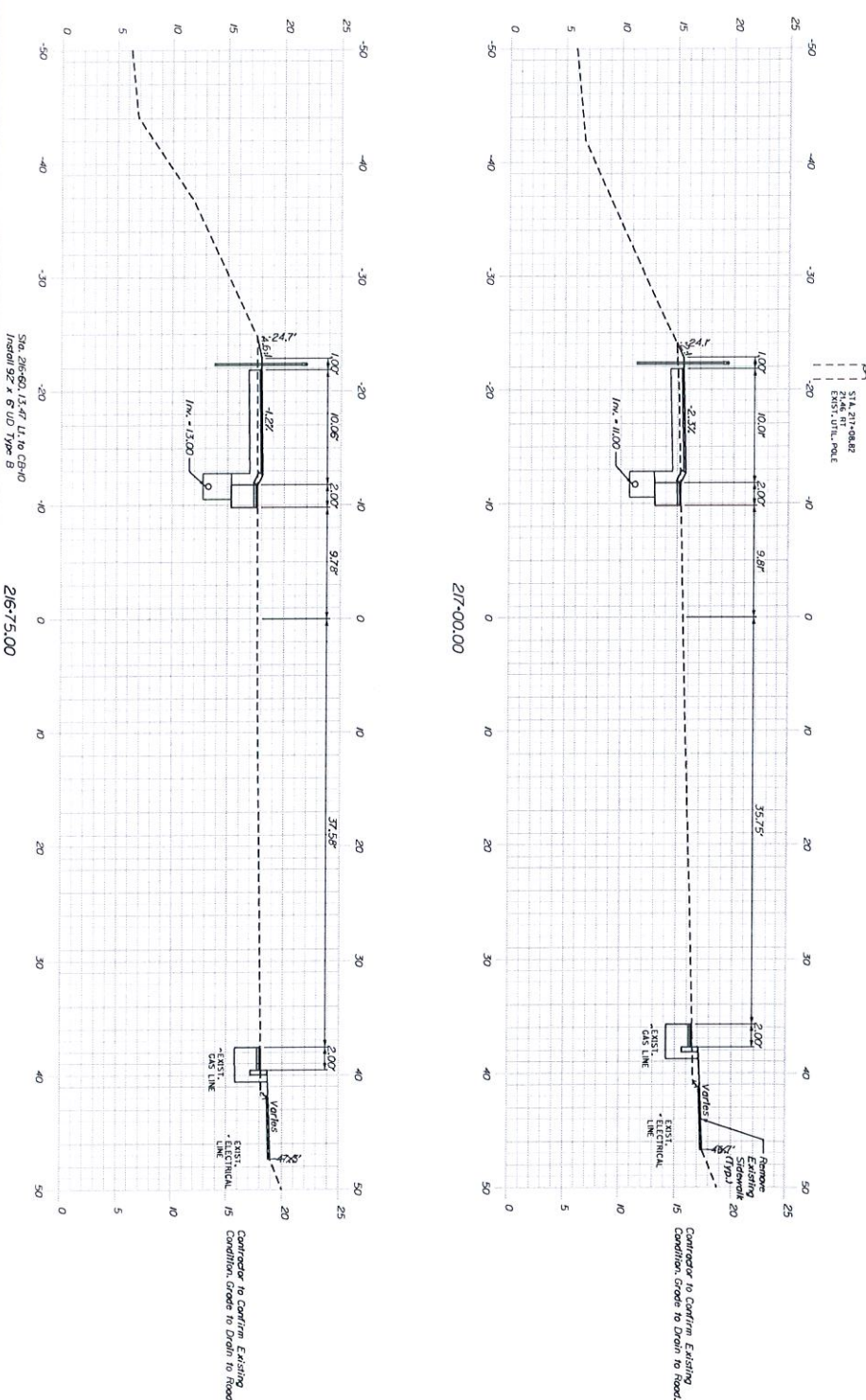


Contractor to Confirm Existing Condition, Grade to Drain to Road.

Contractor to Confirm Existing Condition, Grade to Drain to Road.

Contractor to Confirm Existing Condition, Grade to Drain to Road.

<p>GARDINER ARCADE ST \ WATER ST.</p>		<p>STATE OF MAINE DEPARTMENT OF TRANSPORTATION</p>	
<p>CROSS SECTIONS</p>		<p>1873610</p>	
<p>WIN</p>		<p>1876.10 MULTIMODAL PLANS</p>	
<p>PROJ. MANAGER</p>	<p>S. KEEFER</p>	<p>BY</p>	<p>DATE</p>
<p>DESIGN-DETAILED</p>	<p>PLP</p>	<p>EJB</p>	<p>APR 2020</p>
<p>CHECKED-REVIEWED</p>	<p>LEW</p>		<p>APR 2020</p>
<p>DESIGN-DETAILED</p>			
<p>DESIGN-DETAILED</p>			
<p>REVISIONS 1</p>			
<p>REVISIONS 2</p>			
<p>REVISIONS 3</p>			
<p>REVISIONS 4</p>			
<p>FIELD CHECKS</p>			



Sta. 216+60.13-ft. U. to CH+0
Insert 92 x 6' 10" Type B

216+75.00

217+00.00

Sta. 216+75.00 to Sta. 217+00.00

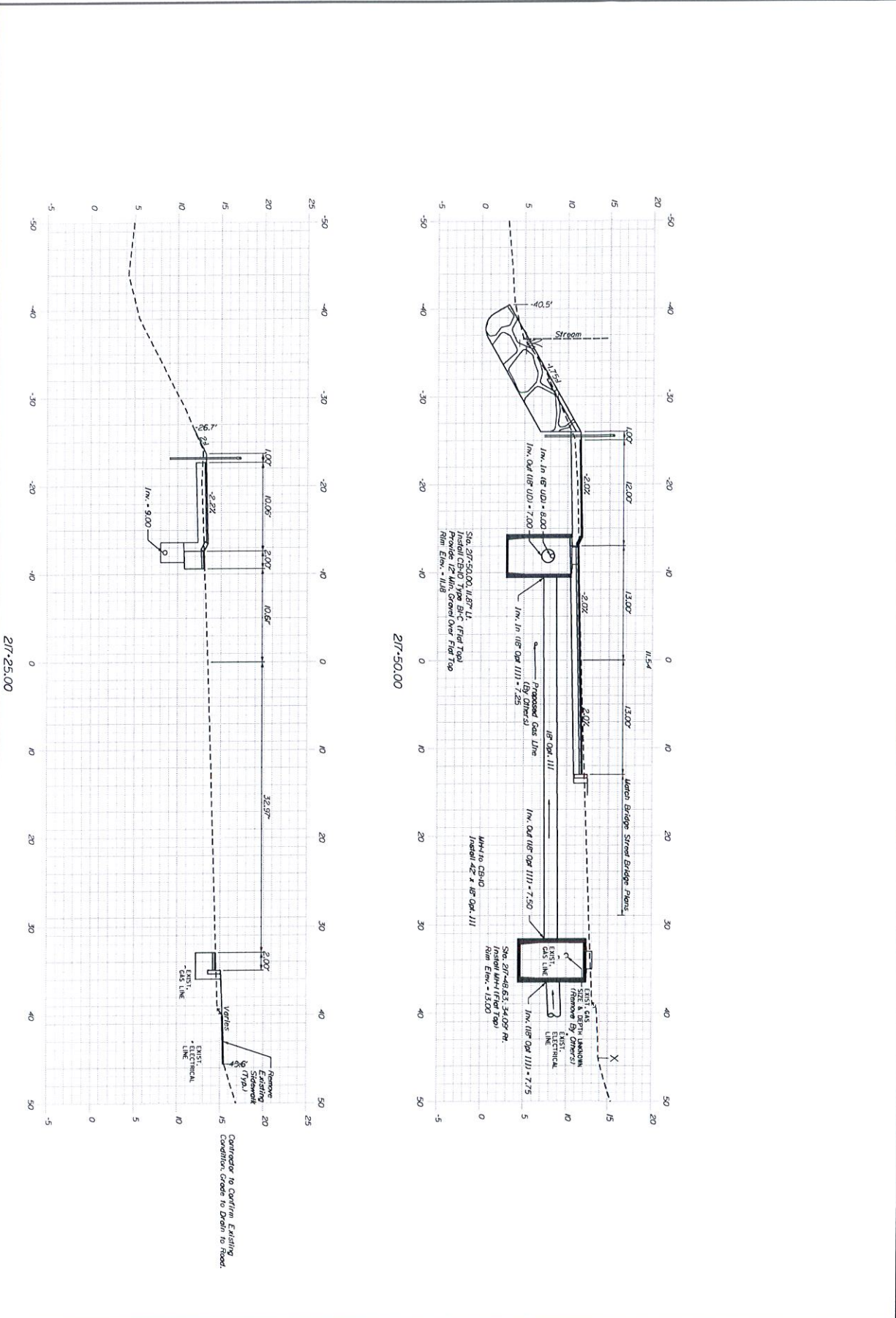
OF 9

SHEET NUMBER

GARDINER
ARCADE ST \ WATER ST.
CROSS SECTIONS

PROJ. MANAGER	B. KEEZER	BY	DATE
DESIGN DETAIL	PLP	E.B.	APR 2020
CHECKED REVIEW	LEV		APR 2020
DESIGN DETAIL	LEV		
DESIGN DETAIL	LEV		
REVISIONS 1			
REVISIONS 2			
REVISIONS 3			
REVISIONS 4			
FIELD CHANGES			

STATE OF MAINE DEPARTMENT OF TRANSPORTATION	
SIGNATURE	1873610
P.E. NUMBER	WIN
DATE	1876.10
MULTIMODAL PLANS	



217-25.00

217-50.00

Sta. 217+25.00 to Sta. 217+50.00

OF 9

SHEET NUMBER
9

**GARDINER
ARCADE ST \ WATER ST.
CROSS SECTIONS**

PROJ. MANAGER	B. KEENE	BY	DATE
DESIGN-DETAILED	P.P.	E.B.	APR 2020
CHECKED-REVIEWED	LEW		APR 2020
DESIGN-DETAILED			
DESIGN-DETAILED			
REVISIONS 1			
REVISIONS 2			
REVISIONS 3			
REVISIONS 4			
FIELD CHANGES			

STATE OF MAINE DEPARTMENT OF TRANSPORTATION	
SIGNATURE	1873610
P.E. NUMBER	WIN
DATE	1876.10 MULTIMODAL PLANS

Gardiner Trail Extension Construction

Cost Estimate (With Reed & Reed Bid Prices)

Completed by: EJB 06/2019

Reviewed by: PLP/LEM 04/2020

ITEM NO.	DESCRIPTION	QTY	UNIT	UNIT COST	TOTAL COST
203.20	COMMON EXCAVATION	210	CY	\$ 18.00	\$ 3,780.00
304.10	AGGREGATE SUBBASE COURSE - GRAVEL	170	CY	\$ 30.00	\$ 5,100.00
403.2081	HOT MIX ASPHALT 12.5MM (POLYMER MODIFIED)	10	T	\$ 188.00	\$ 1,880.00
403.209	HOT MIX ASPHALT 9.5MM SIDEWALKS	32	T	\$ 185.00	\$ 5,920.00
403.213	HOT MIX ASPHALT 12.5MM (BASE COURSE)	15	T	\$ 188.00	\$ 2,820.00
409.15	BITUMINOUS TACK COAT - APPLIED	15	GAL	\$ 4.00	\$ 60.00
604.18	ADJUSTING MANHOLE OR CATCH BASIN TO GRADE	1	EA	\$ 1,200.00	\$ 1,200.00
605.09	6" UNDERDRAIN TYPE B	151	LF	\$ 34.00	\$ 5,134.00
607.22	CEDAR RAIL FENCE	68	LF	\$ 45.00	\$ 3,060.00
608.26	CURB RAMP DETECTABLE WARNING FIELD	56	SF	\$ 105.00	\$ 5,880.00
609.11	VERTICAL CURB TYPE 1	140	LF	\$ 30.00	\$ 4,200.00
609.12	VERTICAL CURB TYPE 1 - CIRCULAR	84	LF	\$ 38.00	\$ 3,192.00 *
609.221	TERMINAL CURB TYPE 1	25	LF	\$ 35.00	\$ 875.00 *
609.22	TERMINAL CURB TYPE 1 - CIRCULAR	15	LF	\$ 40.00	\$ 600.00 *
609.2341	TERMINAL CURB TYPE 1 - 4 FOOT - CIRCULAR	1	EA	\$ 200.00	\$ 200.00 *
609.238	TERMINAL CURB TYPE 1 - 8 FOOT	1	EA	\$ 260.00	\$ 260.00 *
609.2381	TERMINAL CURB TYPE 1 - 8 FOOT - CIRCULAR	2	EA	\$ 310.00	\$ 620.00 *
609.34	CURB TYPE 5	135	LF	\$ 25.00	\$ 3,375.00 *
609.35	CURB TYPE 5 - CIRCULAR	12	LF	\$ 90.00	\$ 1,080.00
615.07	LOAM	38	CY	\$ 55.00	\$ 2,090.00
618.13	SEEDING METHOD 1	2	UN	\$ 60.00	\$ 120.00
618.143	SPECIAL SEED MIX	1	UN	\$ 78.00	\$ 78.00
618.146	SEEDING HYDROMULCH MEDIUM	1	UN	\$ 26.00	\$ 26.00
619.12	MULCH	2	UN	\$ 23.00	\$ 46.00
626.11	PRECAST CONCRETE JUNCTION BOX	2	EA	\$ 700.00	\$ 1,400.00
626.22	NON-METALLIC CONDUIT	75	LF	\$ 25.00	\$ 1,875.00
626.32	24 INCH DIAMETER FOUNDATION	1	EA	\$ 1,800.00	\$ 1,800.00
627.75	WHITE OR YELLOW PAVEMENT AND CURB MARKING	560	SF	\$ 2.00	\$ 1,120.00
634.2101	TYPE A LIGHT STANDARD	1	EA	\$ 6,000.00	\$ 6,000.00
* Quantity Revised with Revision #1				Grand Total	\$ 63,791.00