

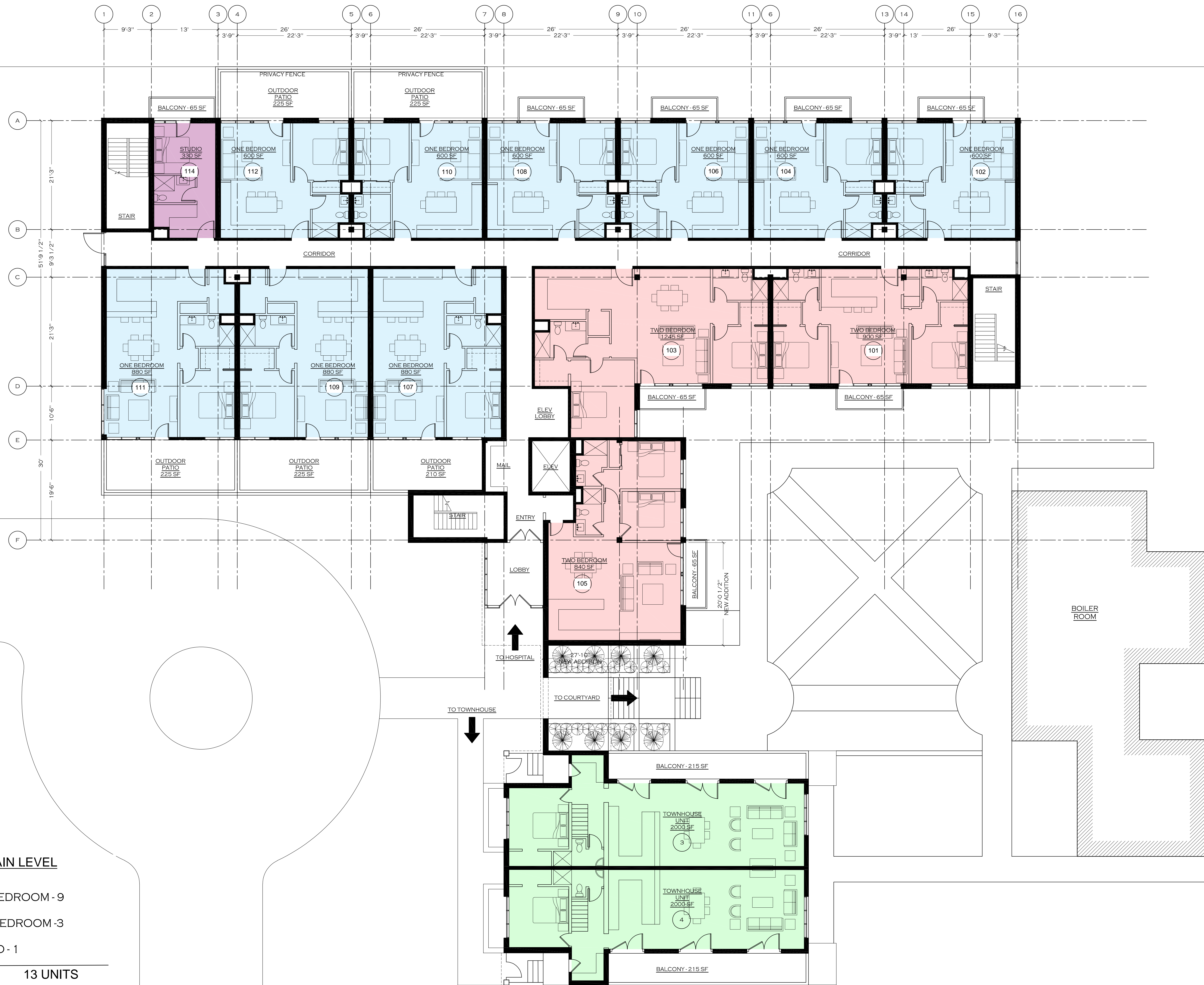
BUILDING 6 LOWER LEVEL

- ONE BEDROOM - 2
- TWO BEDROOM - 4
- STUDIO - 0
- TOWNHOUSE - 0

TOTAL 6 UNITS

BUILDING 5 LOWER LEVEL

- HORIZONTAL - 2



BUILDING 6 MAIN LEVEL

- ONE BEDROOM - 9
- TWO BEDROOM - 3
- STUDIO - 1

TOTAL 13 UNITS

BUILDING 5 MAIN LEVEL

- TOWN HOUSE - 2



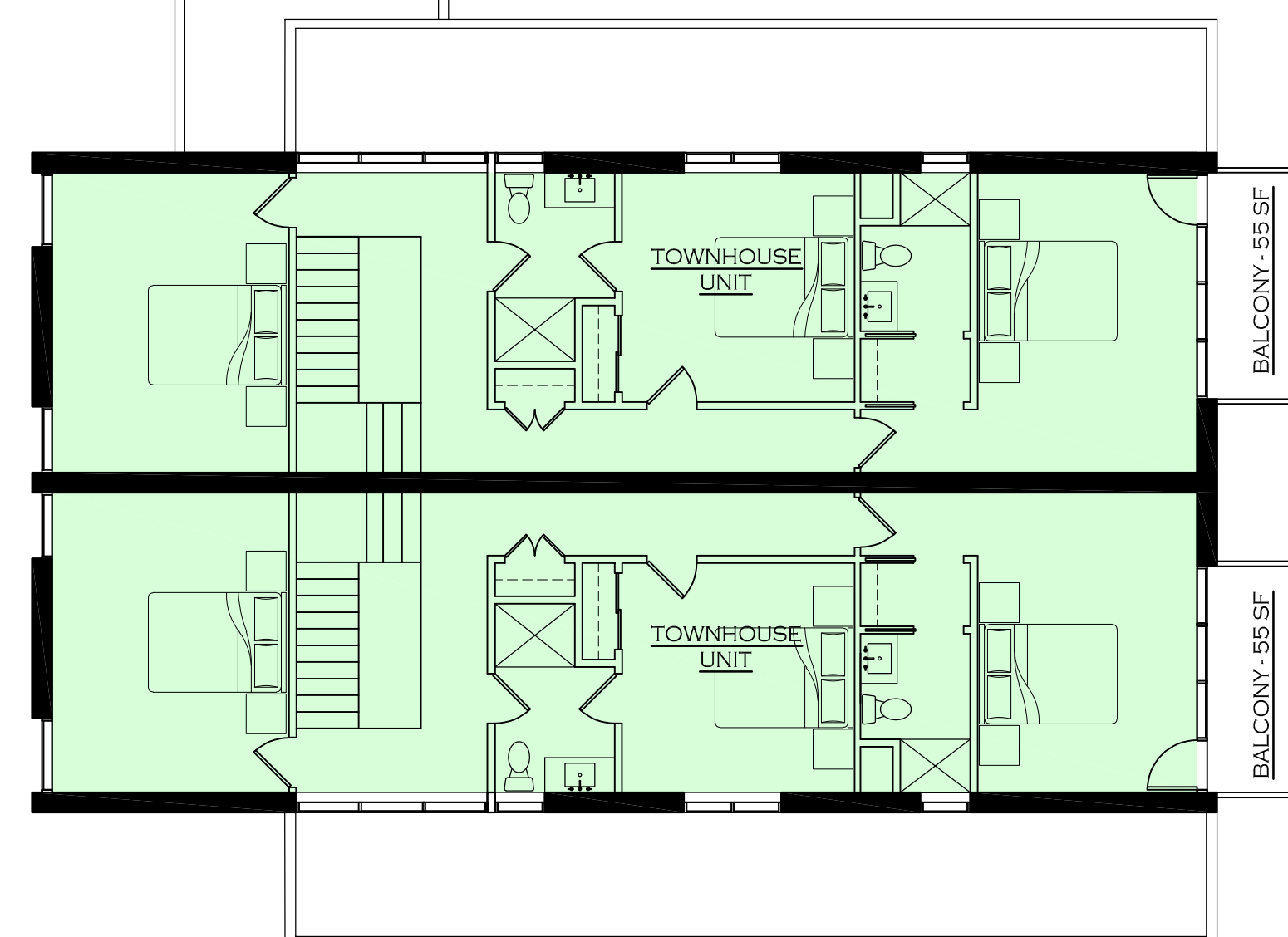
BUILDING 6 UPPER LEVEL

- ONE BEDROOM - 7
- TWO BEDROOM - 3
- STUDIO - 5

TOTAL 15 UNITS

BUILDING 5 UPPER LEVEL

- TOWN HOUSE - 0

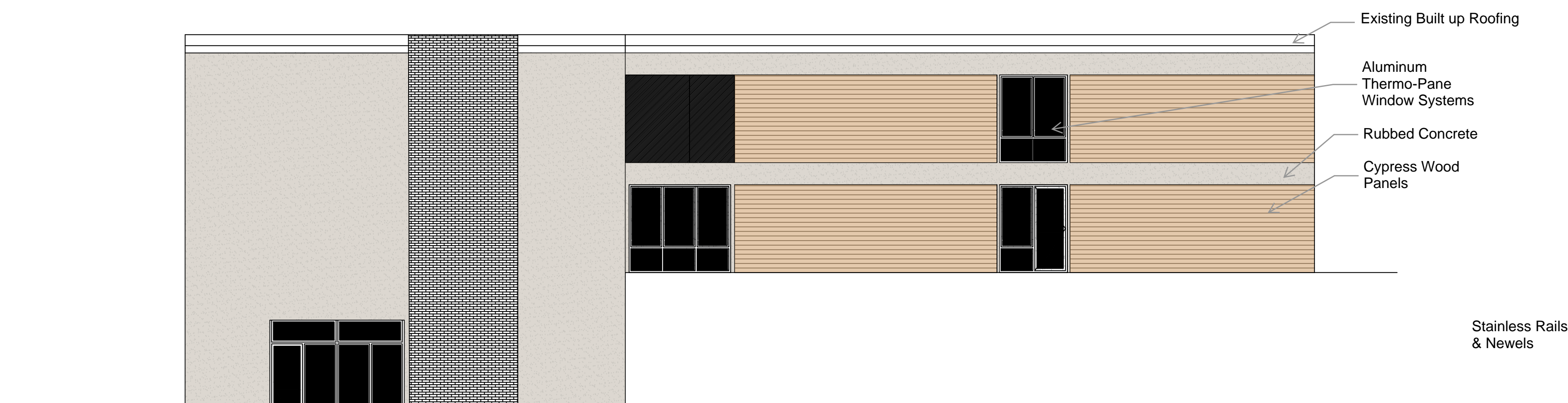




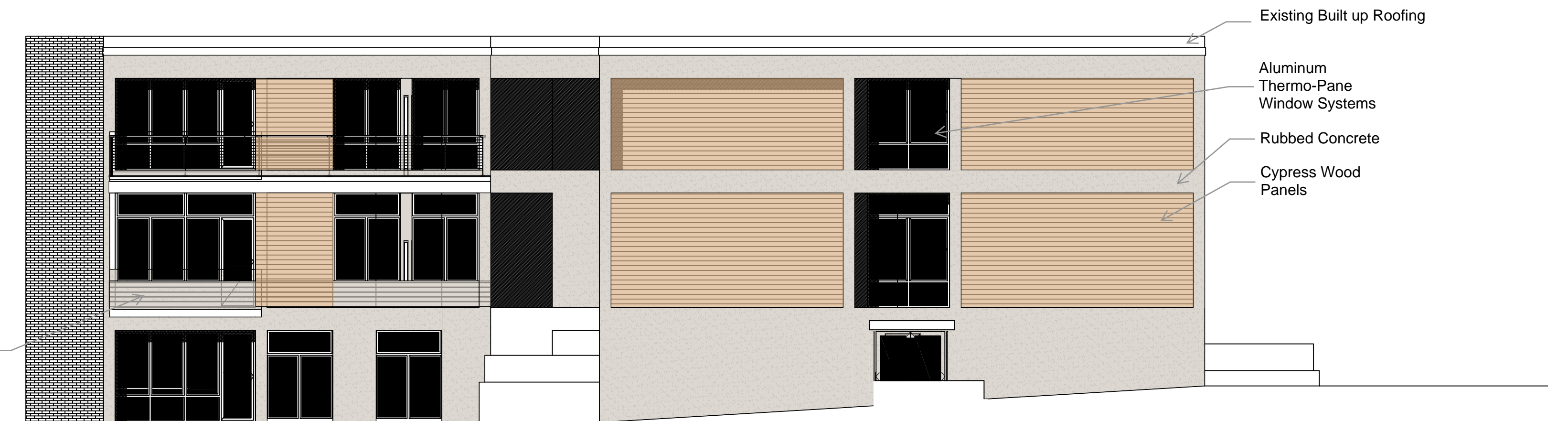
NORTH ELEVATION
SCALE 1/8"=1'-0"



SOUTH ELEVATION
SCALE 1/8"=1'-0"



WEST ELEVATION
SCALE 1/8"=1'-0"



EAST ELEVATION
SCALE 1/8"=1'-0"



TYPICAL EXTERIOR IMPROVEMENTS
NO SCALE