

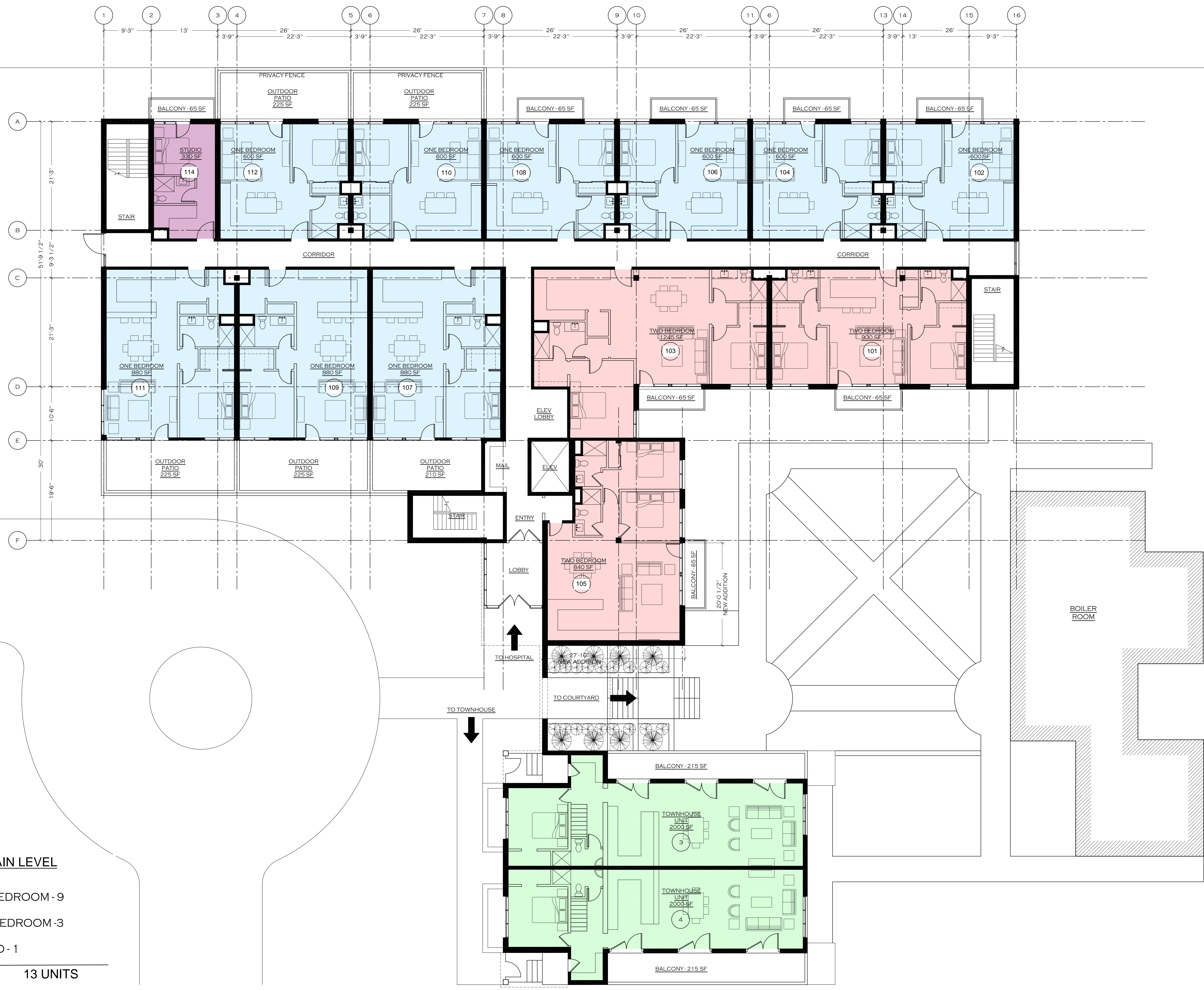
**BUILDING 6 LOWER LEVEL**

- ONE BEDROOM - 2
- TWO BEDROOM - 4
- STUDIO - 0
- TOWNHOUSE - 0

TOTAL 6 UNITS

**BUILDING 5 LOWER LEVEL**

- HORIZONTAL - 2



**BUILDING 6 MAIN LEVEL**

- ONE BEDROOM - 9
- TWO BEDROOM - 3
- STUDIO - 1

TOTAL 13 UNITS

**BUILDING 5 MAIN LEVEL**

- TOWN HOUSE - 2



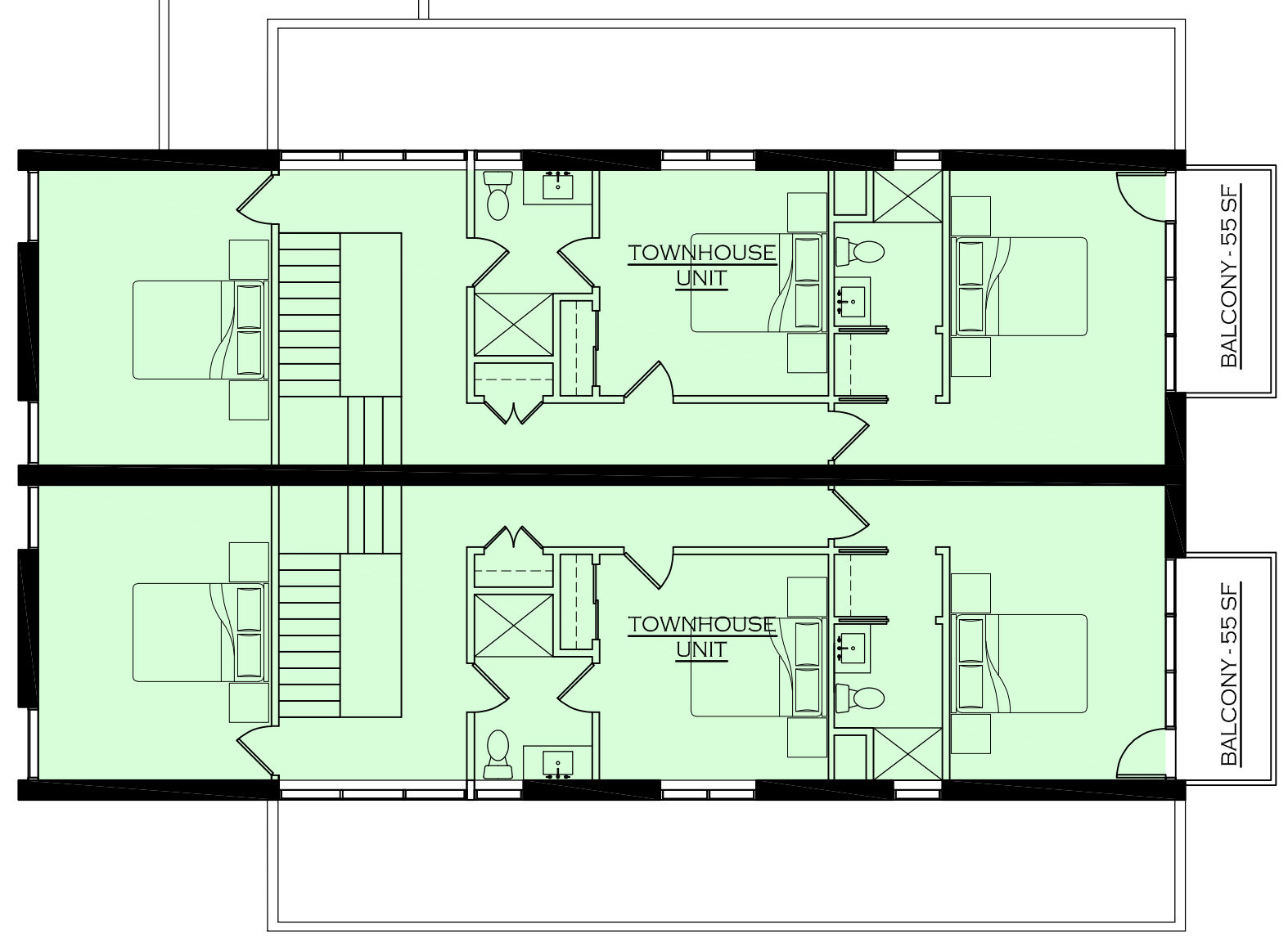
**BUILDING 6 UPPER LEVEL**

- ONE BEDROOM - 7
- TWO BEDROOM - 3
- STUDIO - 5

TOTAL 15 UNITS

**BUILDING 5 UPPER LEVEL**

- TOWN HOUSE - 0

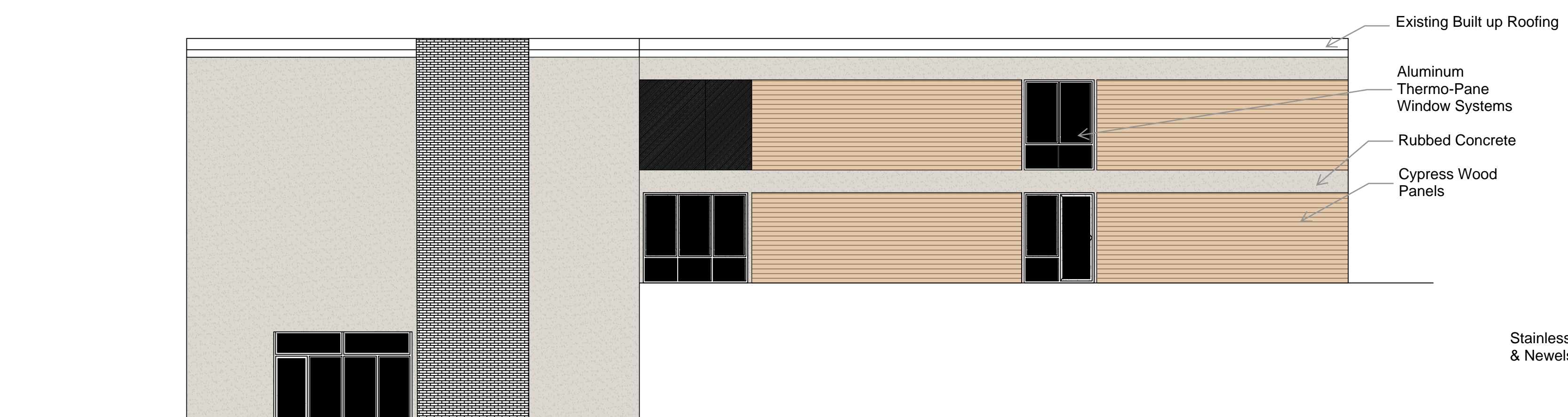




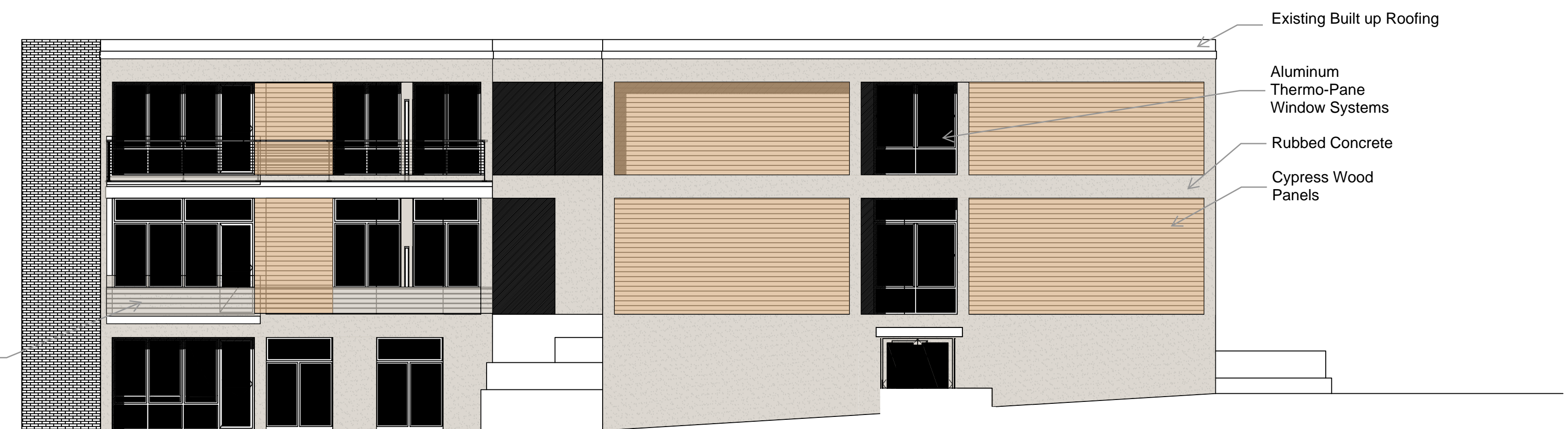
NORTH ELEVATION  
SCALE 1/8"=1'-0"



SOUTH ELEVATION  
SCALE 1/8"=1'-0"



WEST ELEVATION  
SCALE 1/8"=1'-0"



EAST ELEVATION  
SCALE 1/8"=1'-0"



TYPICAL EXTERIOR IMPROVEMENTS  
NO SCALE