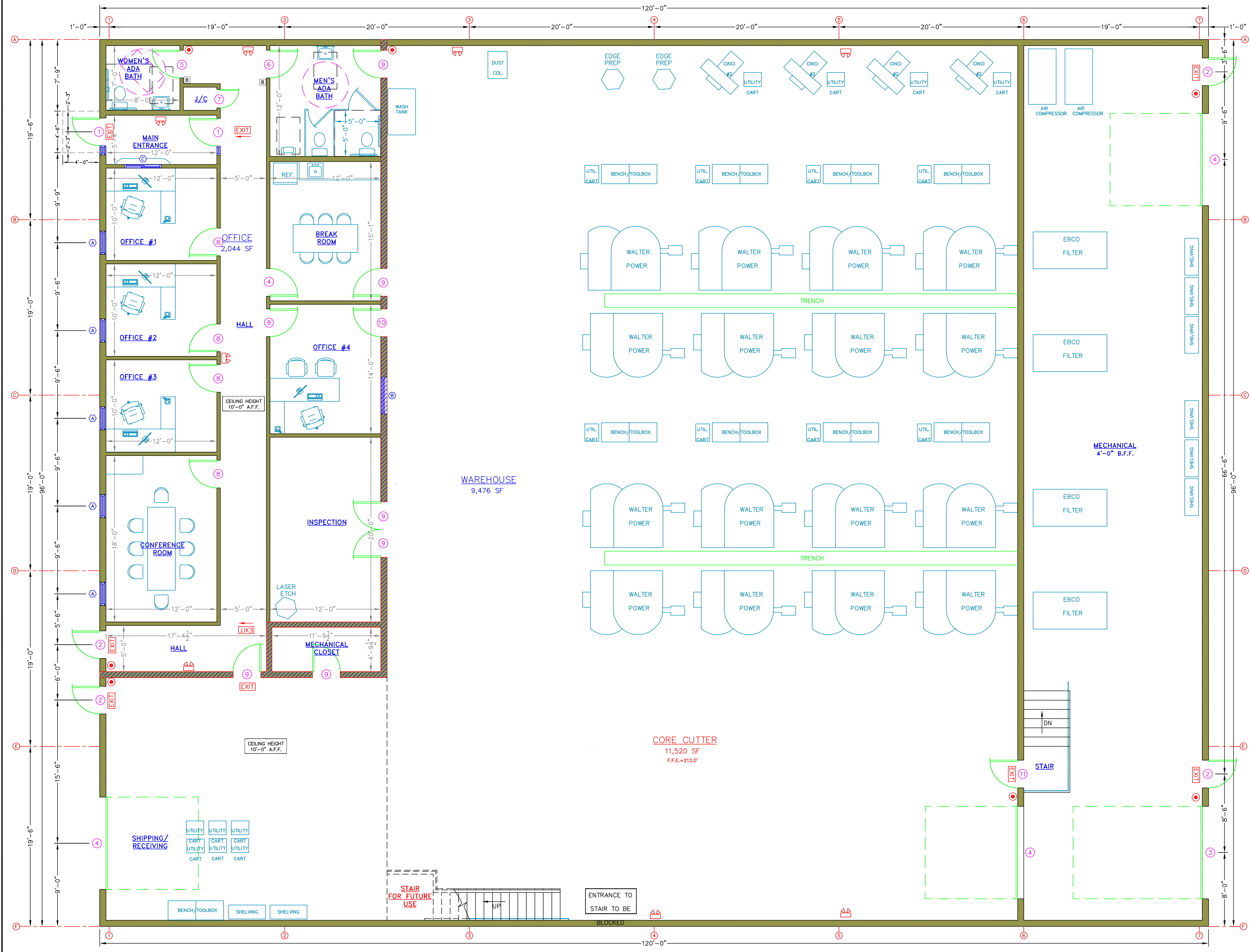


DOOR SCHEDULE						NO.	QUANTITY	SIZE	TYPE	FRAME	REMARKS
NO.	QUANTITY	SIZE	TYPE	FRAME	REMARKS	⑥	1	3'-0" x 6'-8"	SOLID WOOD	METAL	HINGES, PUSH PLATE, D-RING HANDLE, CLOSER
①	2	3'-0" x 7'-0"	FULL GLASS STOREFRONT	METAL	HINGES, PUSH BAR, D-RING PULL HANDLE, CLOSER, ENTRY LOCKSET, ADA THRESHOLD	⑦	1	2'-0" x 6'-8"	SOLID WOOD	METAL	HINGES, LEVER HARDWARE, ENTRY LOCKSET
②	4	3'-0" x 7'-0"	METAL INSULATED	METAL	HINGES, LEVER HARDWARE, CLOSER, ENTRY LOCKSET	⑧	4	3'-0" x 6'-8"	SOLID WOOD	METAL	HINGES, LEVER HARDWARE, ENTRY LOCKSET
③	2	10'-0" x 14'-0"	INSULATED OVERHEAD	N/A	TRACK, AUTOMATIC OPENER	⑨	6	3'-0" x 7'-0"	FIRE RATED HOLLOW METAL	METAL	HINGES, LEVER HARDWARE, PASSAGE LOCKSET, CLOSER, 90-MIN. FIRE RATED
④	3	10'-0" x 10'-0"	INSULATED OVERHEAD	N/A	TRACK, AUTOMATIC OPENER	⑩	1	3'-0" x 7'-0"	FIRE RATED HOLLOW METAL	METAL	HINGES, LEVER HARDWARE, ENTRY LOCKSET, CLOSER, 90-MIN. FIRE RATED
⑤	1	3'-0" x 6'-8"	SOLID WOOD	METAL	HINGES, LEVER HARDWARE, PRIVACY LOCKSET	⑪	1	3'-0" x 7'-0"	HOLLOW METAL	METAL	HINGES, LEVER HARDWARE, PASSAGE LOCKSET

WINDOW SCHEDULE				
NO.	QUANTITY	UNIT DIMENSION	TYPE	FRAME
①	5	2'-0" x 5'-0"	CASEMENT	METAL
②	1	4'-0" x 4'-0"	FIRE RATED INTERIOR FIXED	METAL
③	1	4'-0" x 4'-0"	SLIDER	METAL
④	12	5'-0" x 2'-0"	FIXED	METAL

LEGEND	
	EXISTING WALL
	PROPOSED WALL
	1-HR. FIRE RATED WALL
	2-HR. FIRE RATED WALL
	EXIT SIGN
	EMERGENCY LIGHTING
	SMOKE DETECTOR
	FIRE ALARM PULL HANDLE
	HEAT DETECTOR
	HORN/STROBE LIGHT
	FIRE EXTINGUISHER
	BRAILLE SIGNAGE

- PLAN SUBMISSION NOTES**
- THIS PLAN IS FOR CITY OF GARDINER BUILDING CODE, LIFE SAFETY CODE, ADA, FIRE MARSHAL AND OCCUPANCY APPROVAL ONLY.
 - PLAN BASED ON PLAN PROVIDED BY THE OWNER.
 - THE PLUMBING, ELECTRICAL, AND MECHANICAL DESIGN OF THE BUILDING IS BY THE OWNER.
 - IBC 2015 USE GROUP: FACTORY (F-2)
 - 2018 NFPA LIFE SAFETY OCCUPANCY: INDUSTRIAL
 - CONSTRUCTION TYPE: TYPE V B (UNPROTECTED)



ADVANCE COPY

ENGINEERING SURVEYING
E.S. COFFIN
 E.S. COFFIN ENGINEERING & SURVEYING, INC.
 432 Com Road P.O. Box 4687 Augusta, Maine 04330
 Ph. (207) 623-9475 Fax (207) 623-0616 Toll Free 1-800-244-9475

NO.	DATE	REVISIONS

CLIENT & PROJECT
 CORE CUTTER
 JAMES GRAHAM

SCALE: AS SHOWN
DATE: JANUARY 3, 2023
DRAWN BY: CSC
CHECKED BY: JEC

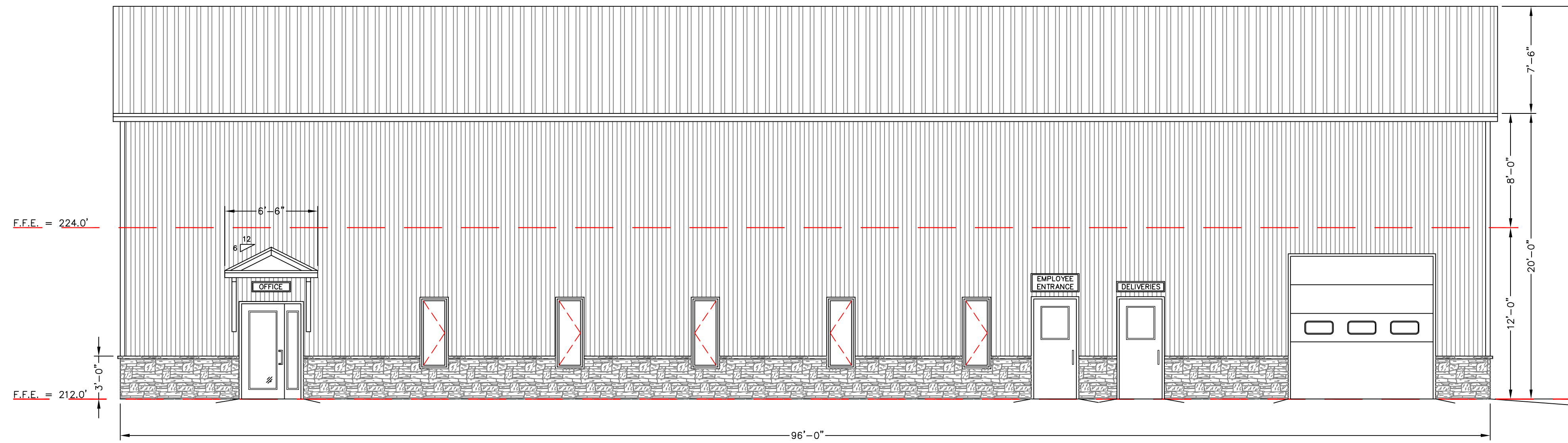
LOCATION: LIBBY HILL BUSINESS PARK
TOWN: GARDINER
COUNTY: KENNEBEC
STATE: MAINE

PROJ. NO. 2022-005

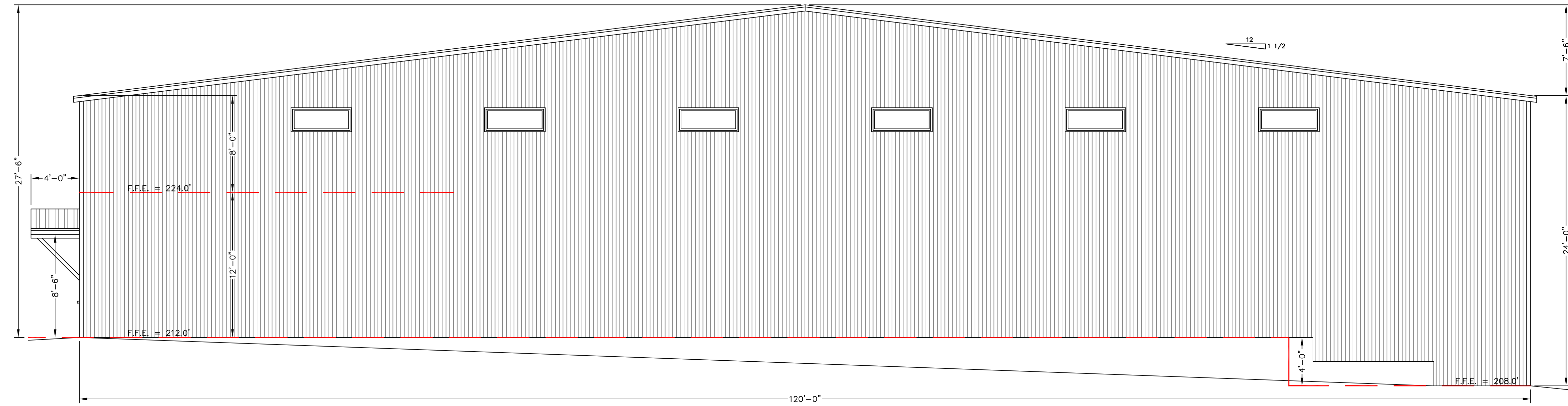
FLOOR PLAN
 SCALE 3/16" = 1'-0"

A-1

ADVANCE COPY



FRONT ELEVATION
SCALE 3/16" = 1'-0"



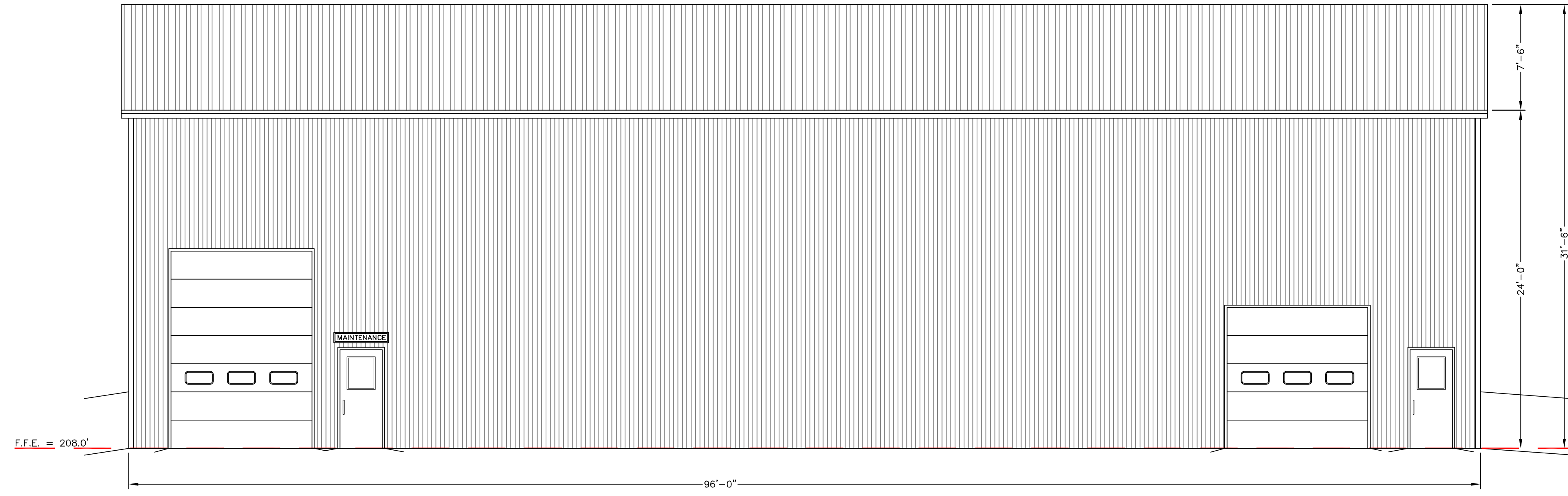
RIGHT SIDE ELEVATION
SCALE 3/16" = 1'-0"

NO.	DATE	REVISIONS

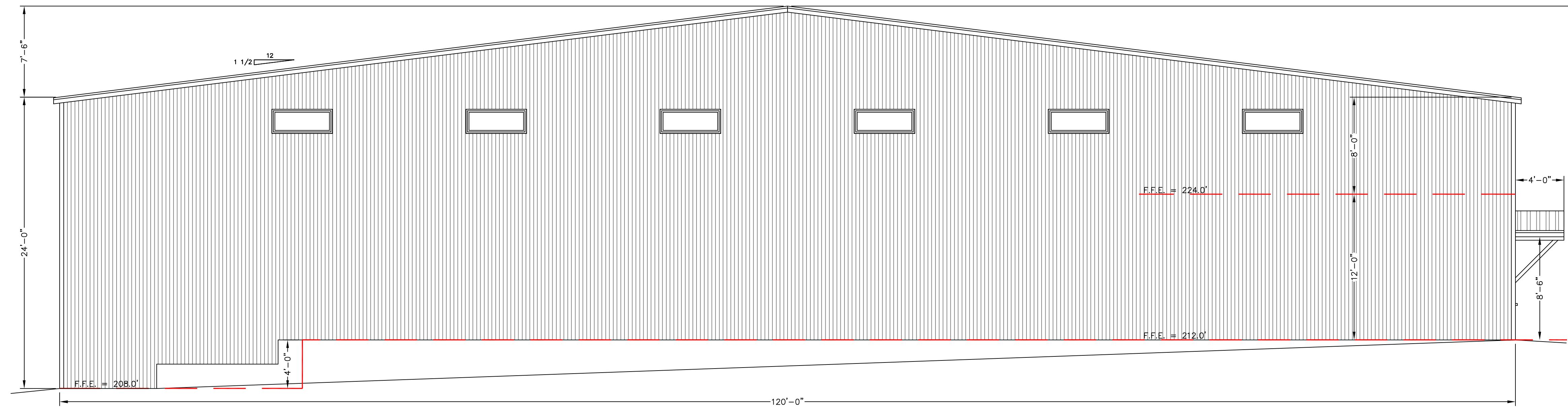
CLIENT & PROJECT CORE CUTTER JAMES GRAHAM	SHEET TITLE: ELEVATIONS		DRAWN BY: CSC CHECKED BY: JEC
	SCALE: AS SHOWN	DATE: JANUARY 3, 2023	
LOCATION: LIBBY HILL BUSINESS PARK	TOWN: GARDINER	COUNTY: KENNEBEC	STATE: MAINE

PROJ. NO. 2022-005

A-2



REAR ELEVATION
SCALE 3/16" = 1'-0"



LEFT SIDE ELEVATION
SCALE 3/16" = 1'-0"

ADVANCE COPY



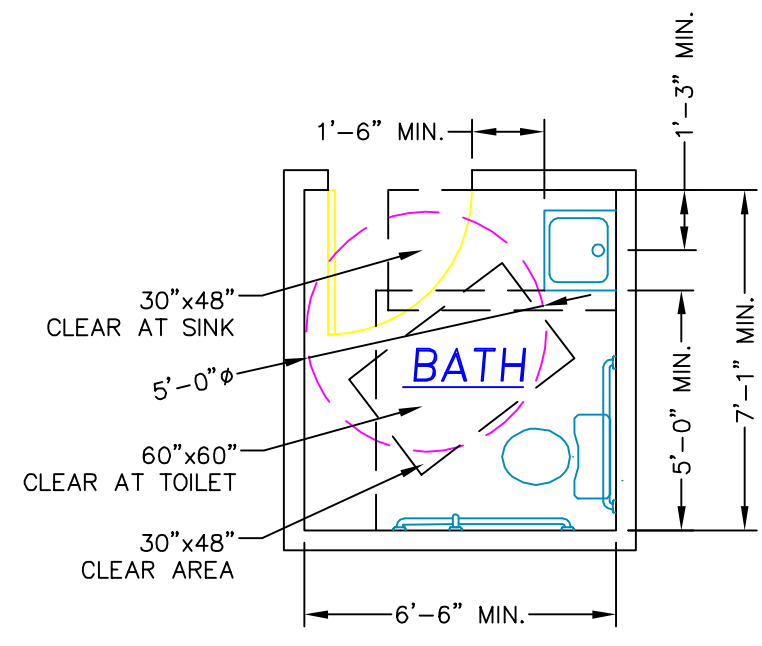
NO.	REVISIONS	DATE

ELEVATIONS

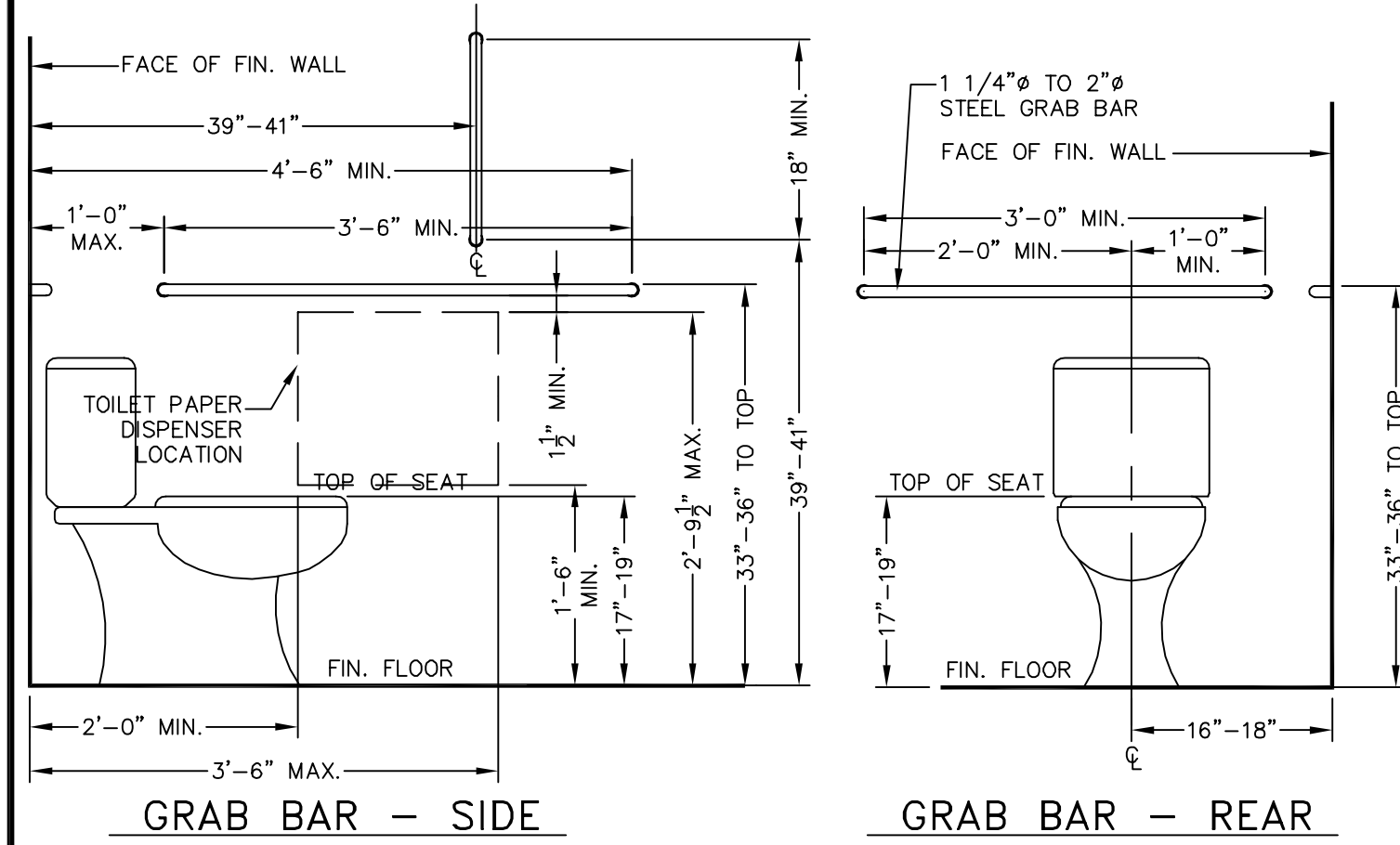
SCALE: AS SHOWN
DATE: JANUARY 3, 2023
DRAWN BY: CSC
CHECKED BY: JEC

CLIENT & PROJECT: CORE CUTLER JAMES GRAHAM
LOCATION: LIBBY HILL BUSINESS PARK
TOWN: GARDINER COUNTY: KENNEBEC STATE: MAINE

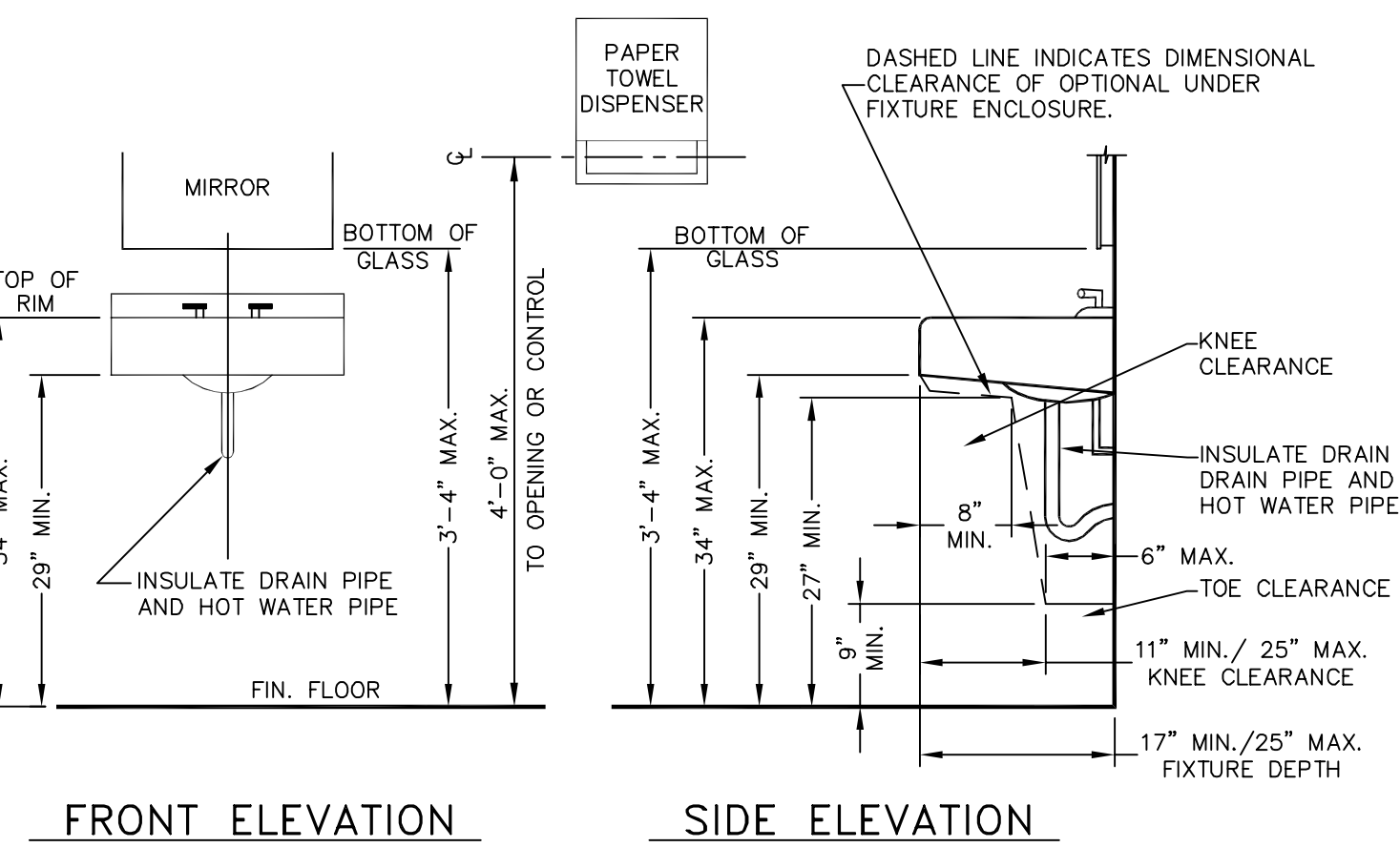
PROJ. NO. 2022-005



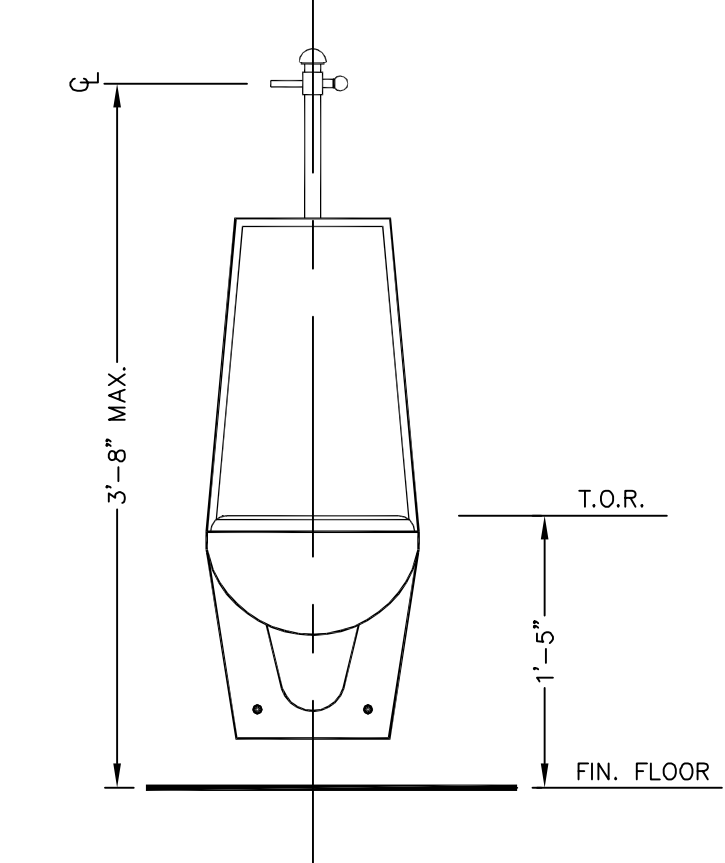
HANDICAP BATHROOM DETAIL
NO SCALE



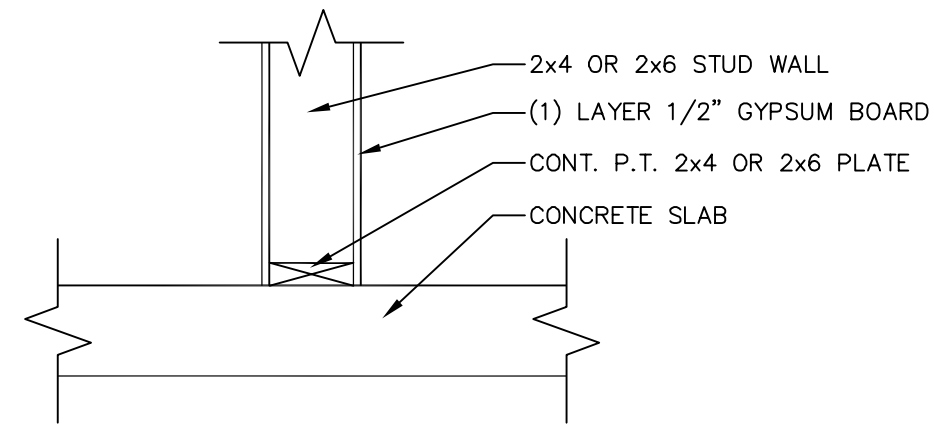
BARRIER FREE TOILET DIMENSIONAL REQUIREMENTS
NO SCALE



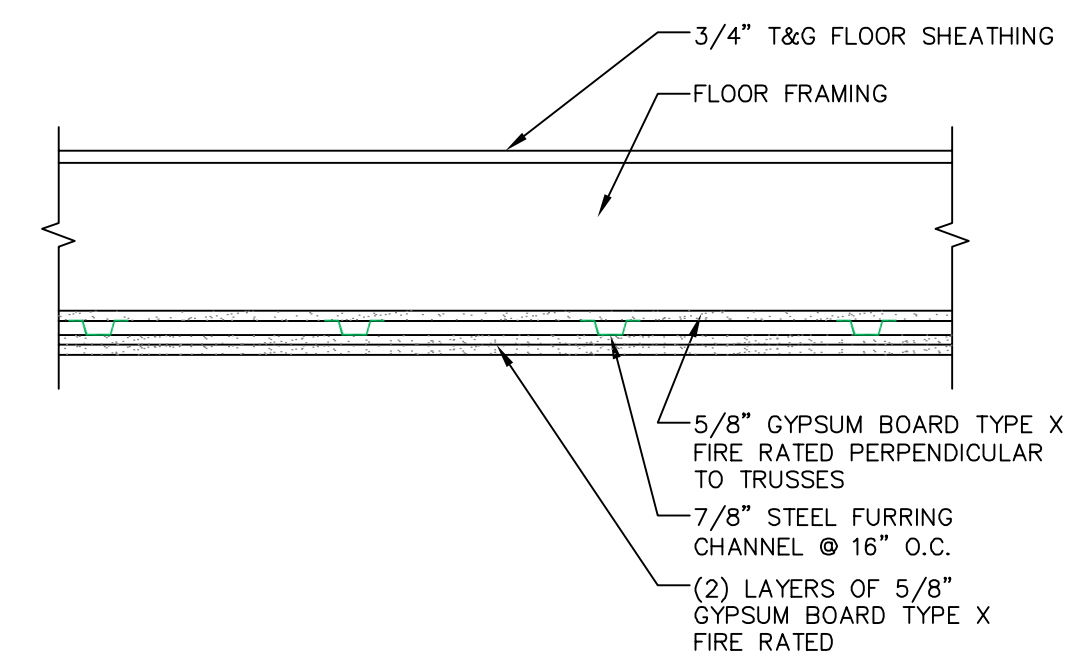
BARRIER FREE LAVATORY DIMENSIONAL REQUIREMENTS
NO SCALE



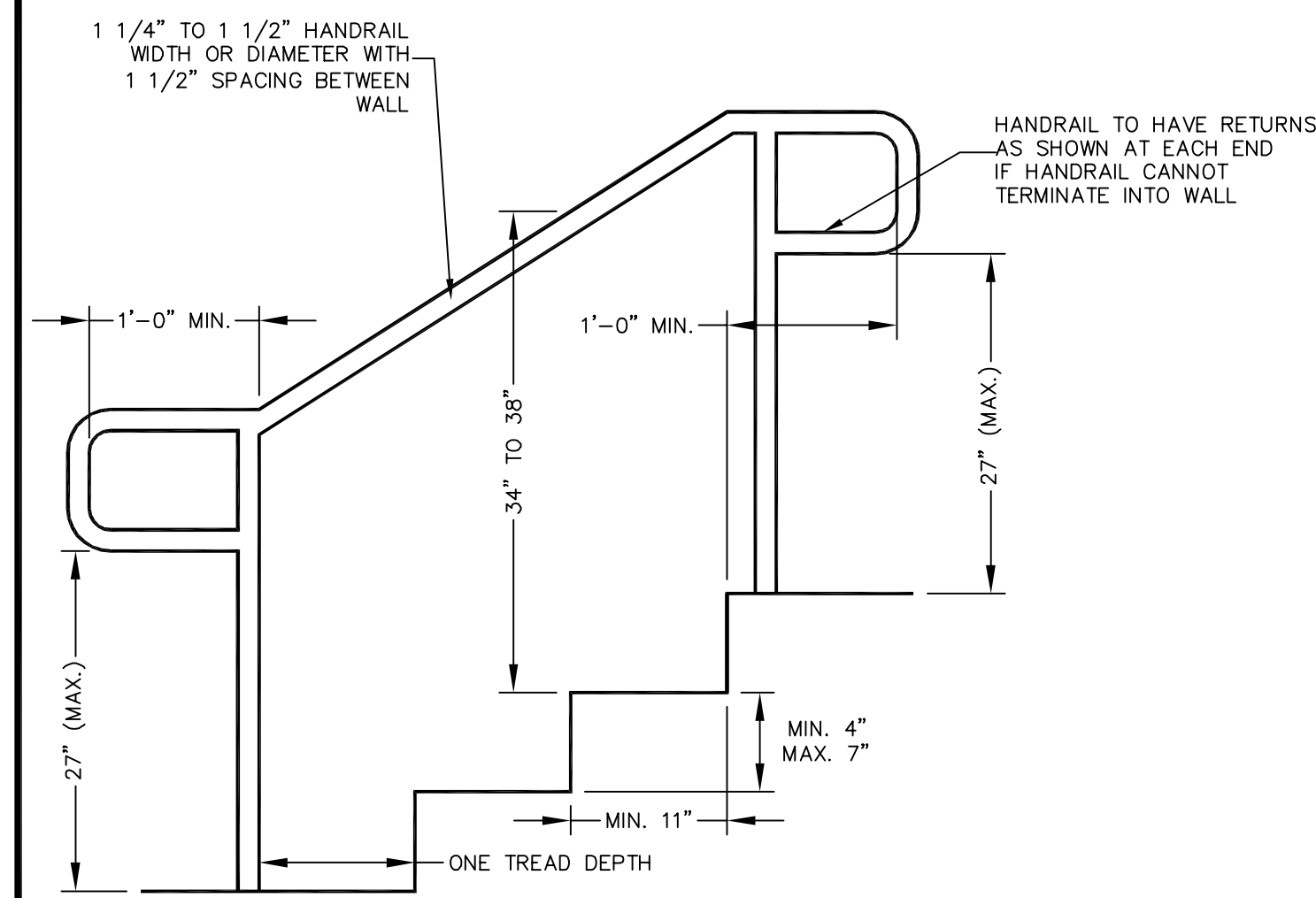
URINAL
NOT TO SCALE



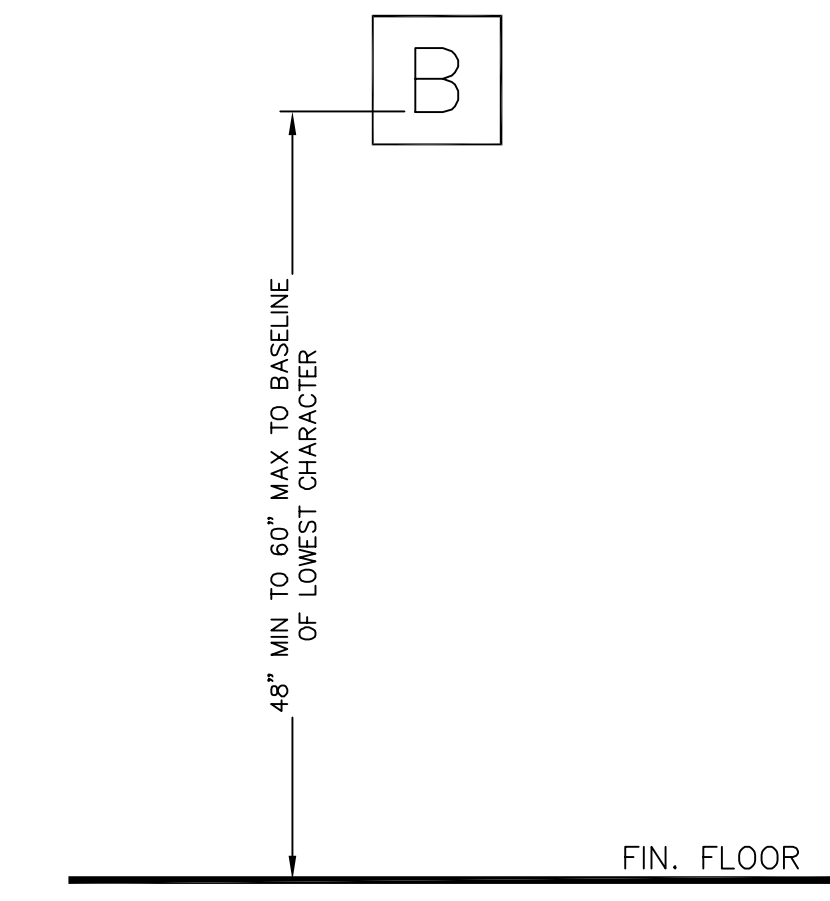
TYPICAL WALL DETAIL
NO SCALE



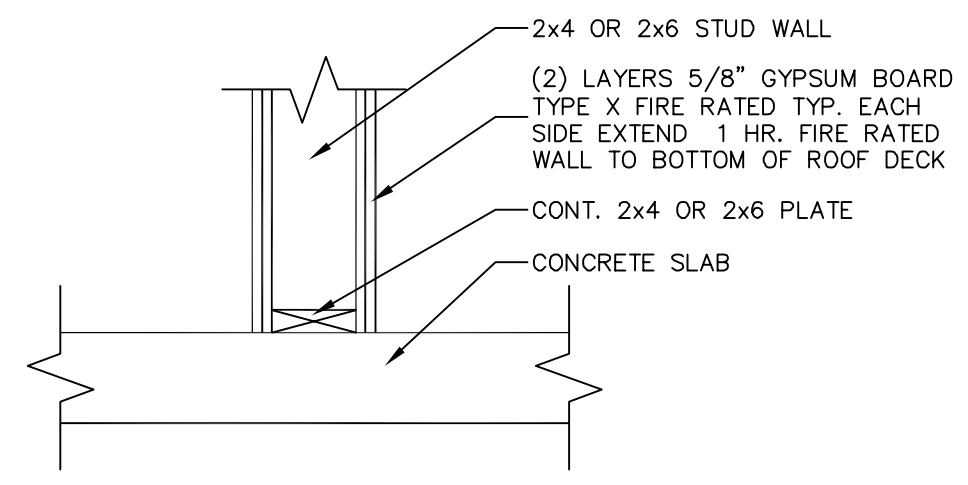
2-HR. FIRE RATED CEILING DETAIL
UL DES L538
NO SCALE



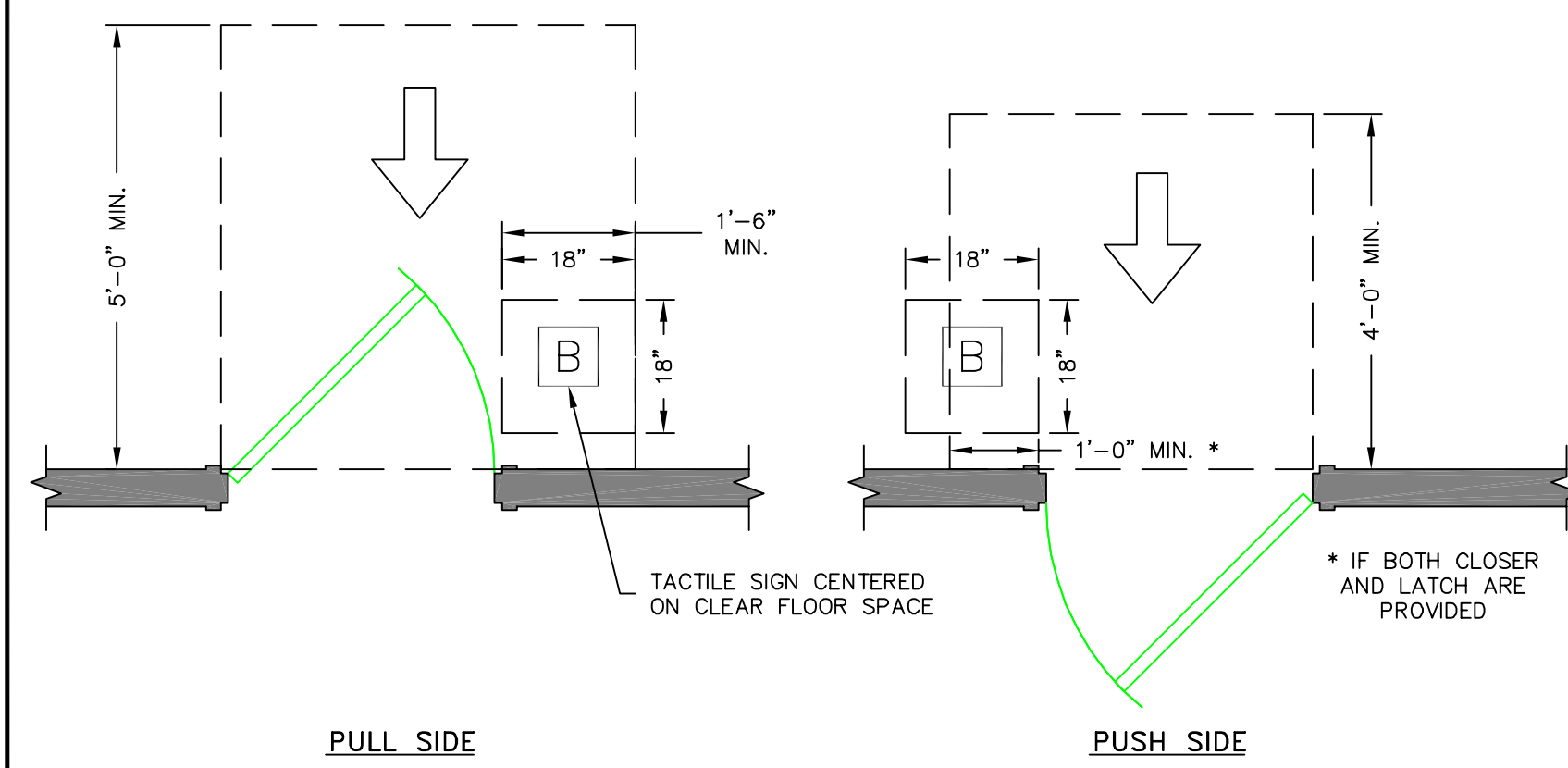
A.D.A. STAIR & HANDRAIL DETAIL
NO SCALE



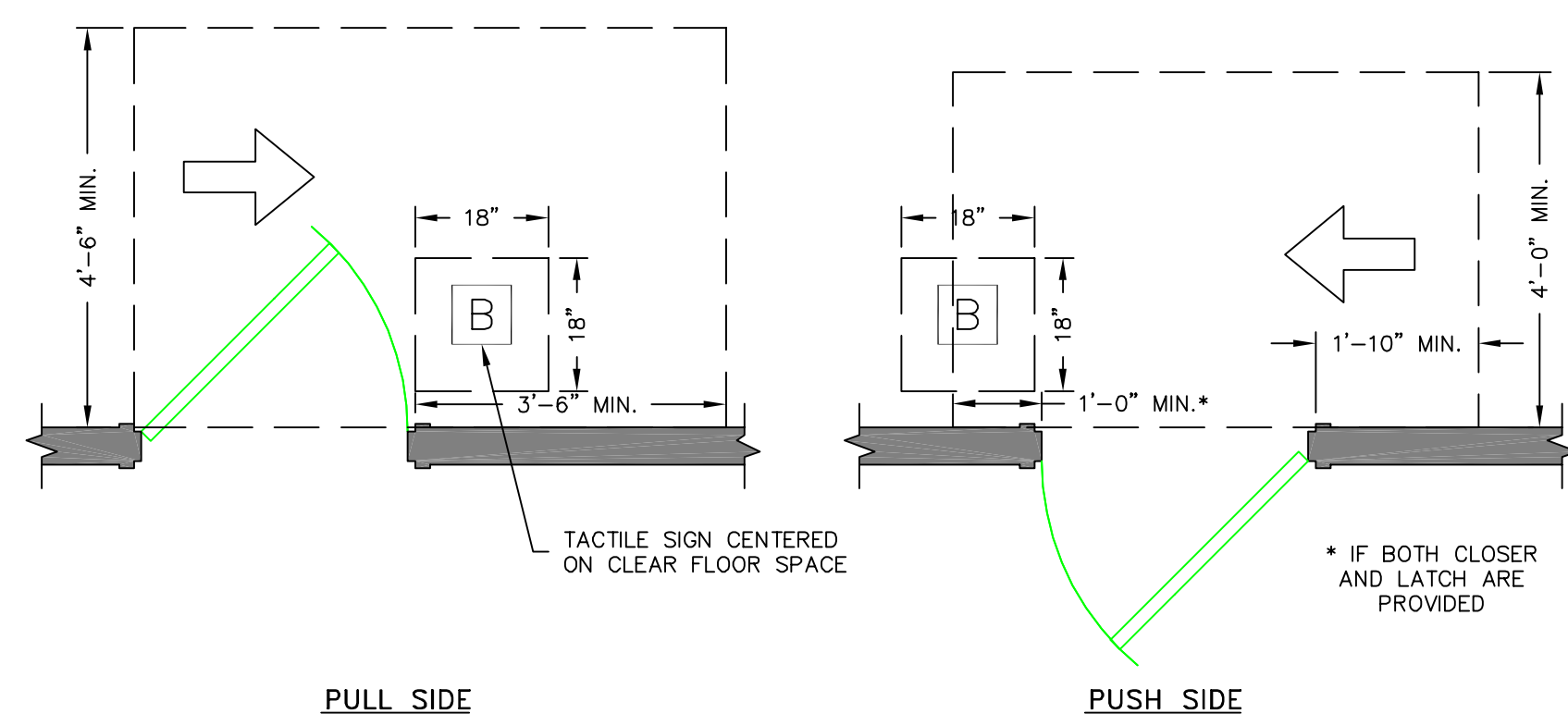
TACTILE SIGNAGE DETAIL
NOT TO SCALE



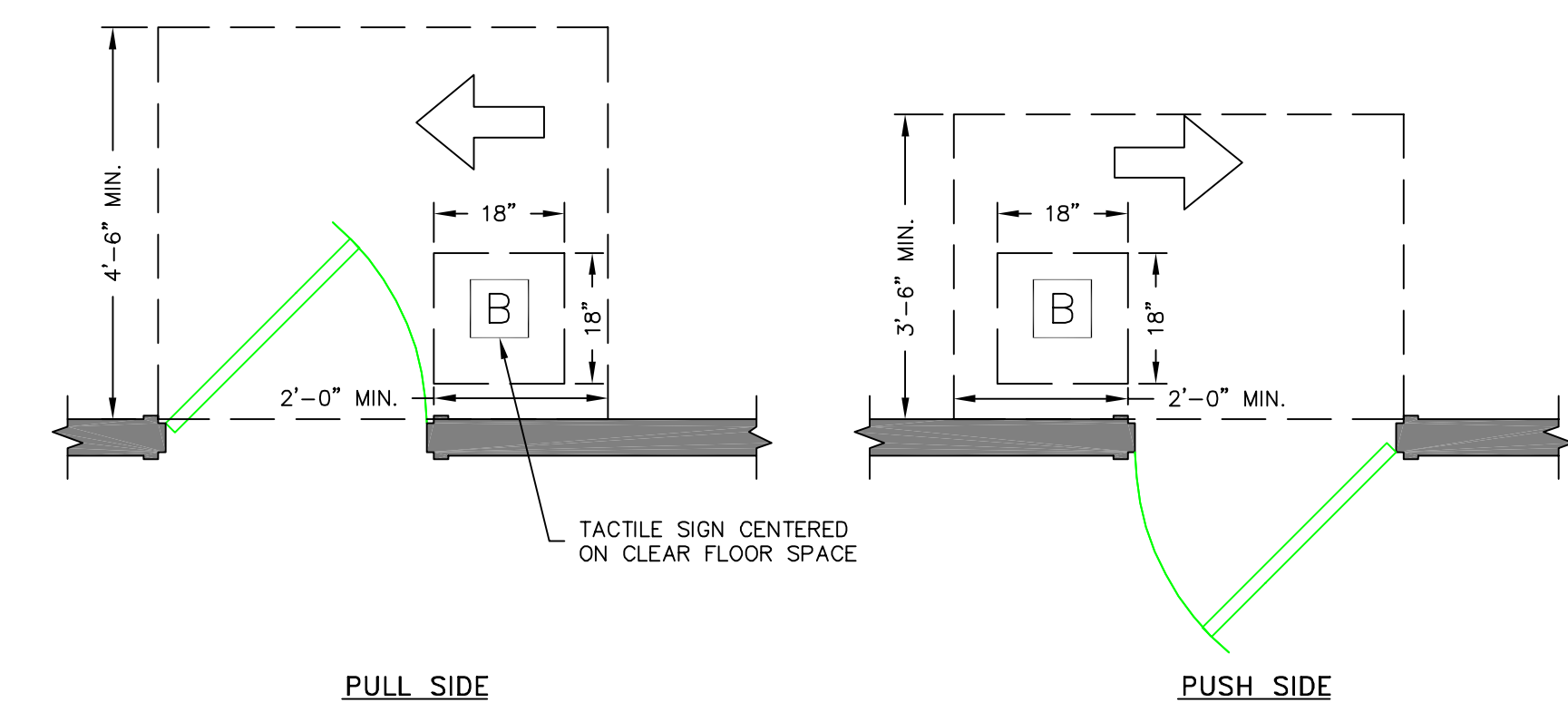
2-HR. FIRE RATED WALL DETAIL
UL DES U301
NO SCALE



FRONT APPROACH CLEARANCE REQUIREMENTS
NO SCALE



HINGE APPROACH CLEARANCE REQUIREMENTS
NO SCALE



LATCH APPROACH CLEARANCE REQUIREMENTS
NO SCALE

NO.	REVISIONS	DATE

DETAILS	
SCALE: AS SHOWN	DRAWN BY: CSC
DATE: JANUARY 3, 2023	CHECKED BY: JEC

CLIENT & PROJECT	CORE CUTTER JAMES GRAHAM
LOCATION:	LIBBY HILL BUSINESS PARK
TOWN:	GARDINER
COUNTY:	KENNEBEC
STATE:	MAINE