

## PROPOSED LOT # 1

Total Lot Size 5785sf

65' road frontage on Iron Mine Hill Road

88' Deep Left-side

90' Deep Right-side

65' Back lot

20' set back from street

20' set back from Right

30' set back from Left

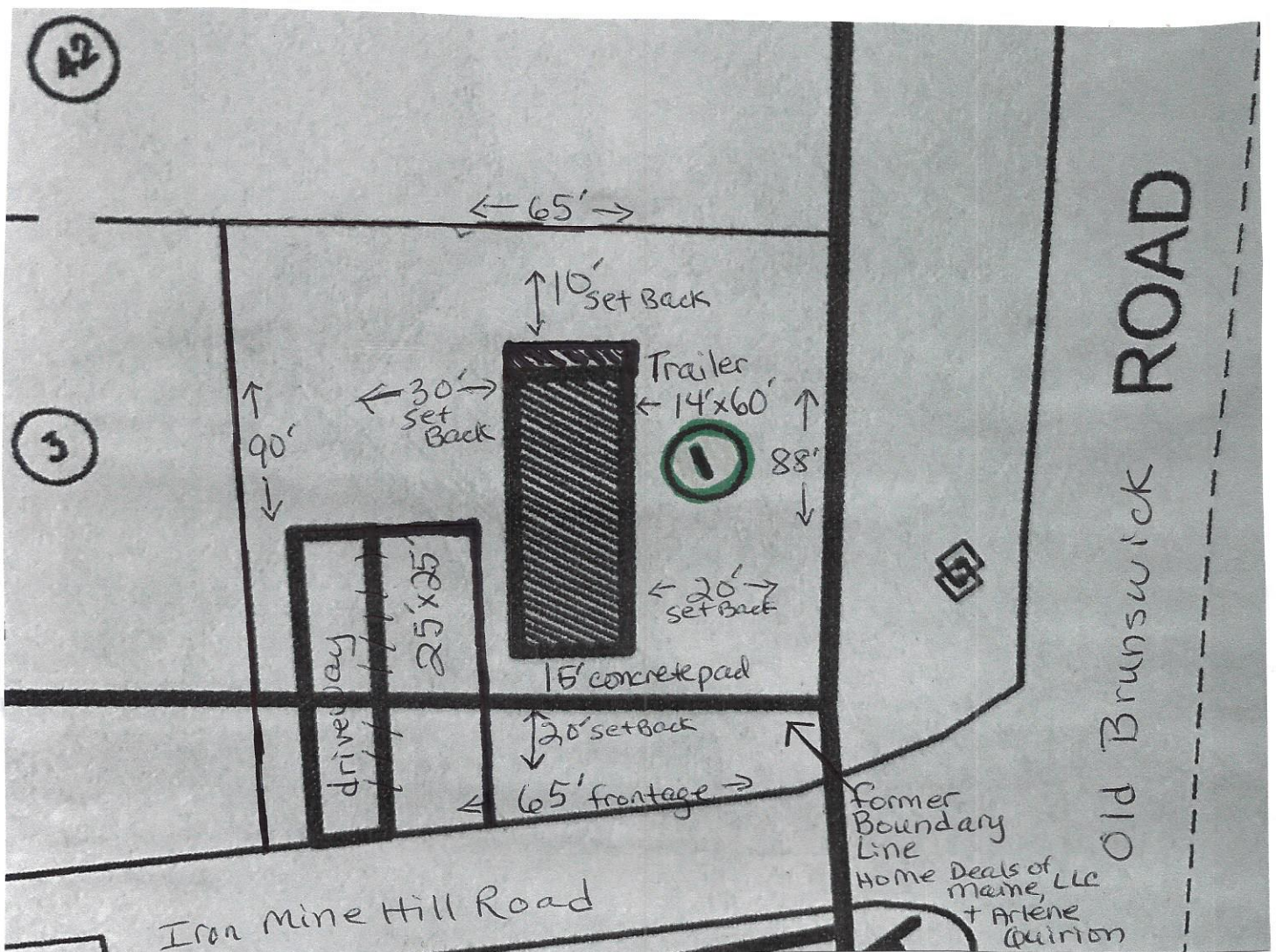
10' set back from Rear

Trailer size 14' x 60' = 840 sf or 14' x 54' = 756sf - note standard sizes

Concrete pad 15' x 64'

Driveway size approximate 25' x 25' - to accommodate at least 2 vehicles

Please note trailer placement not to scale





## PROPOSED LOT # 3

**Total Lot Size 5980sf**

65' road frontage on Iron Mine Hill Road

90' Deep Left-side

94' Deep Right-side

65' Back lot

20' set back from street

30' set back from Right

20' set back from Left

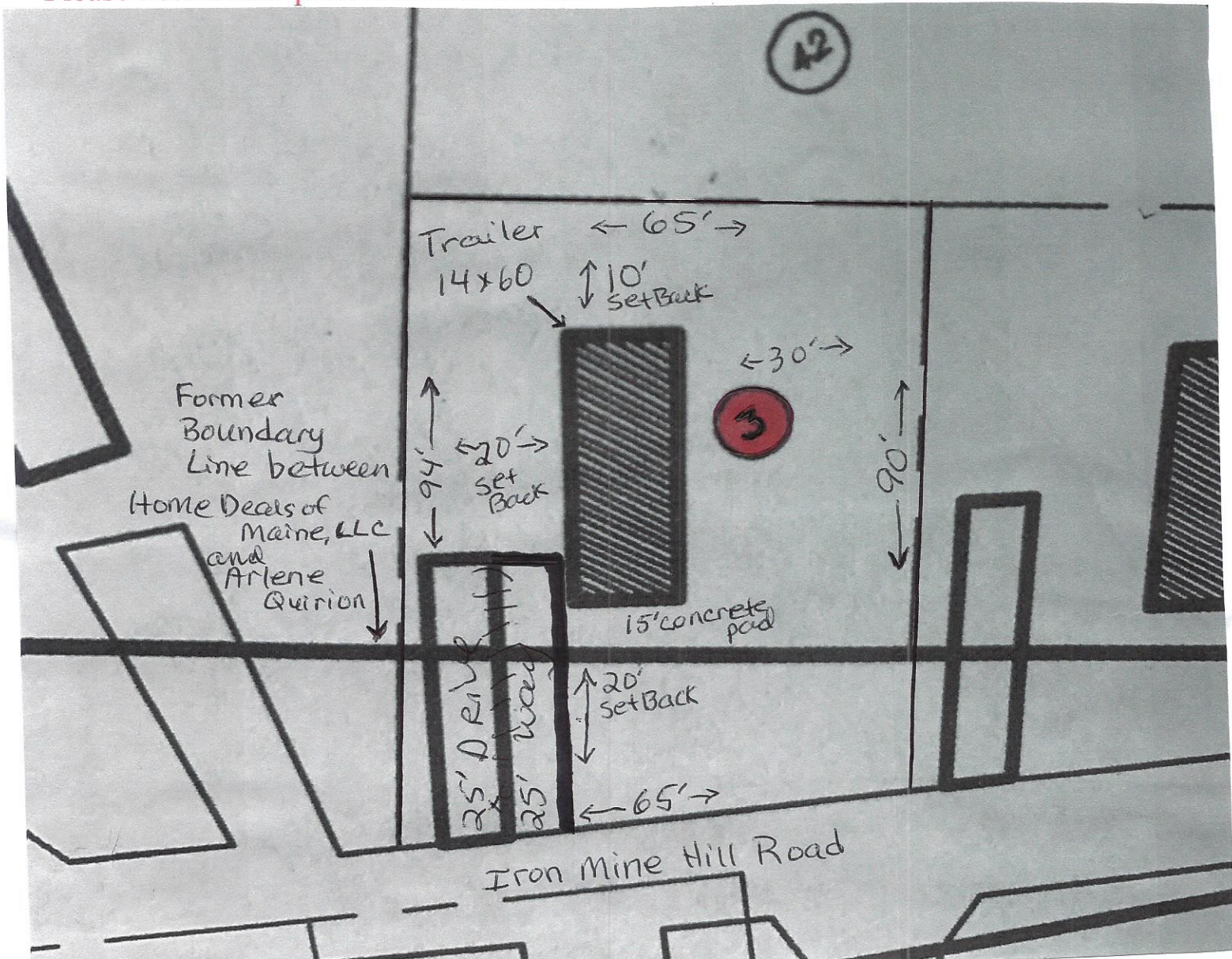
10' set back from Rear

Trailer size 14' x 60' (840)sf or 14' x 54' (756sf)

Concrete pad 15' x 64'

Driveway size approximate 25' x 25' - to accommodate at least 2 vehicles

Please note trailer placement not to scale





## PROPOSED LOT # 16

**Total Lot Size - 6615sf**

65' road frontage on Iron Mine Hill Road

96' Deep Right-side

96' Deep Left-side

82' Back Boundary line

Left side curves inward to meet set back requirements. Lot #14 and Lot #18- were both existing trailers- when we purchased the park. There is 57 lf separating both trailers, which allows ample space for an additional pad. All 10' set backs are met for Lots #14, #16, and #18.

30' set back from street

10' set back from Right

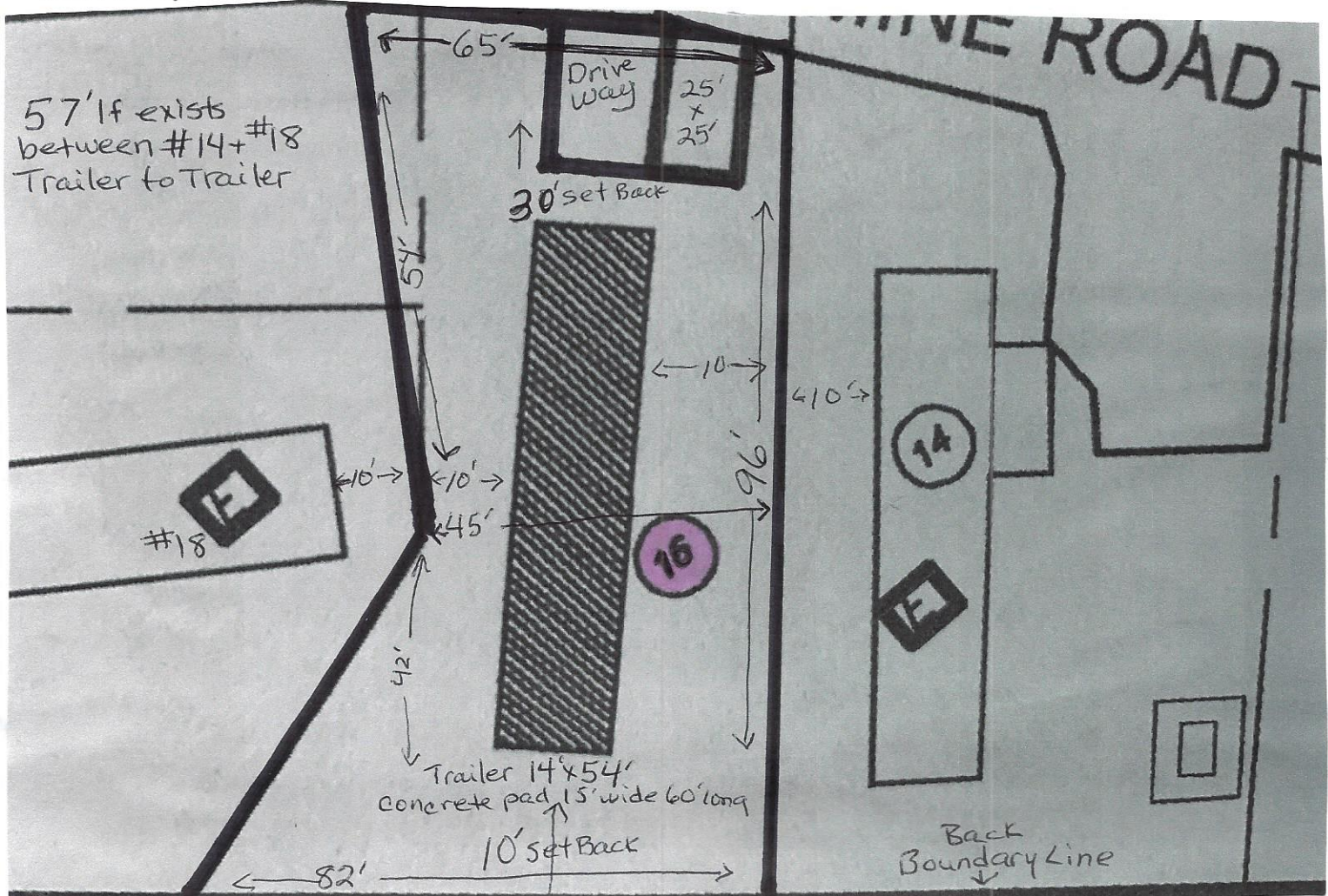
10' set back from Left

10' set back from Rear

Concrete pad 15' by 56'

Trailer size 14'x 54' (756sf)

Driveway size approximate 25' X 25'- to accommodate at least 2 vehicles





## PROPOSED LOT # 17

**Total Lot Size 11,375sf**

65' road frontage on Iron Mine Hill Road

185' Deep Left-side

165' Deep Right-side

65' Backlot (Note- back boundary line used proposed Vassoll Land Swap Line)

30' set back from street

30' set back from Right

20' set back from Left

55' set back from Rear

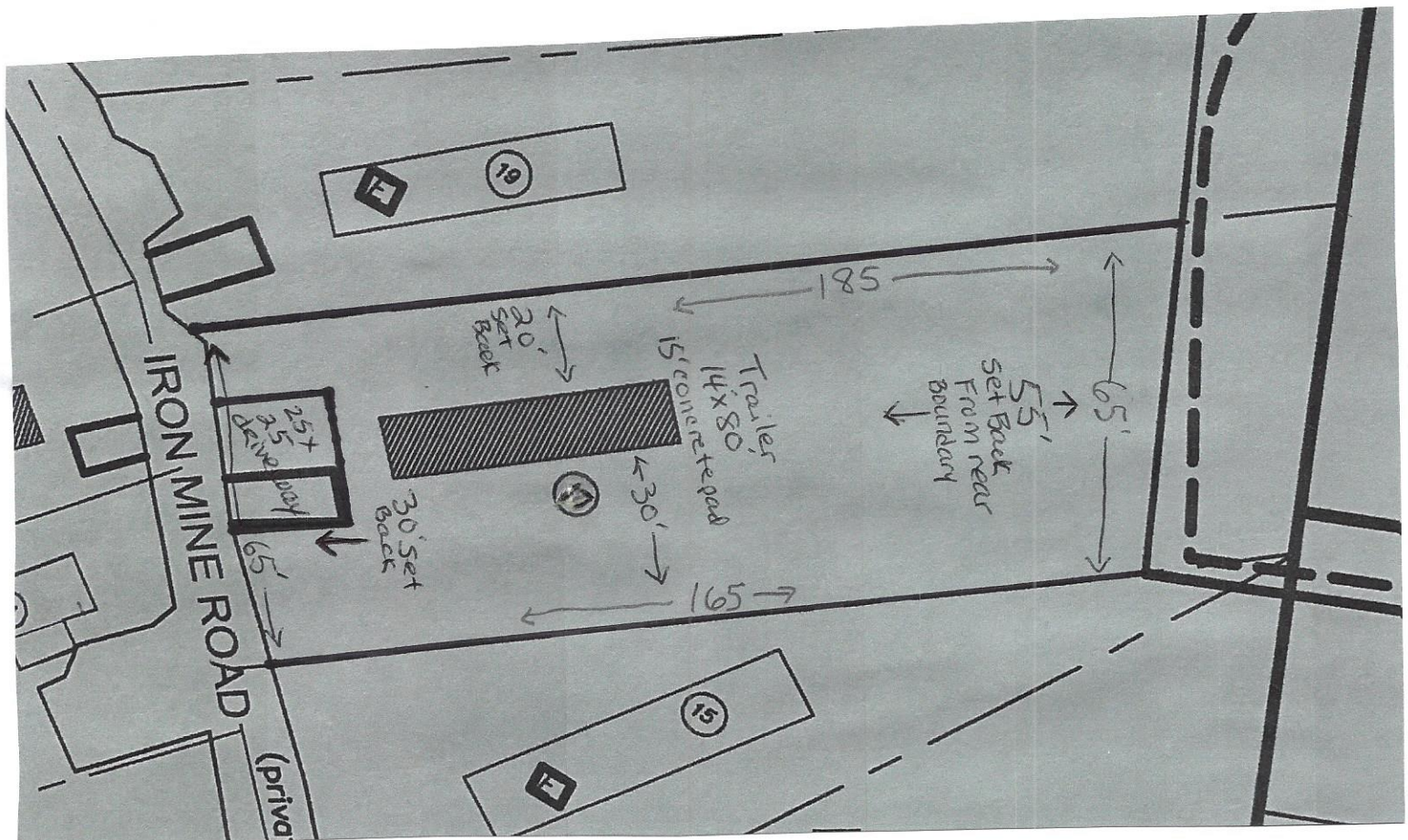
Trailer size 14' x 80' 1120sf

Concrete pad 15' x 84'

Driveway size approximate 25' x 25' - to accommodate at least 2 vehicles

Due to terrain, ledge, and grade - driveway may extend longer than 25'

Please note trailer placement not to scale





## PROPOSED LOT # 25

Total Lot Size 6561sf (minus curve in road)

81' road frontage on Iron Mine Hill Road (AFTER corner)

81' Deep Left-side

81' Deep Right-side (also road frontage on Iron Mine Hill Rd- BEFORE corner)

81' Backlot

40' set back from street

10' set back from Right

10' set back from Left

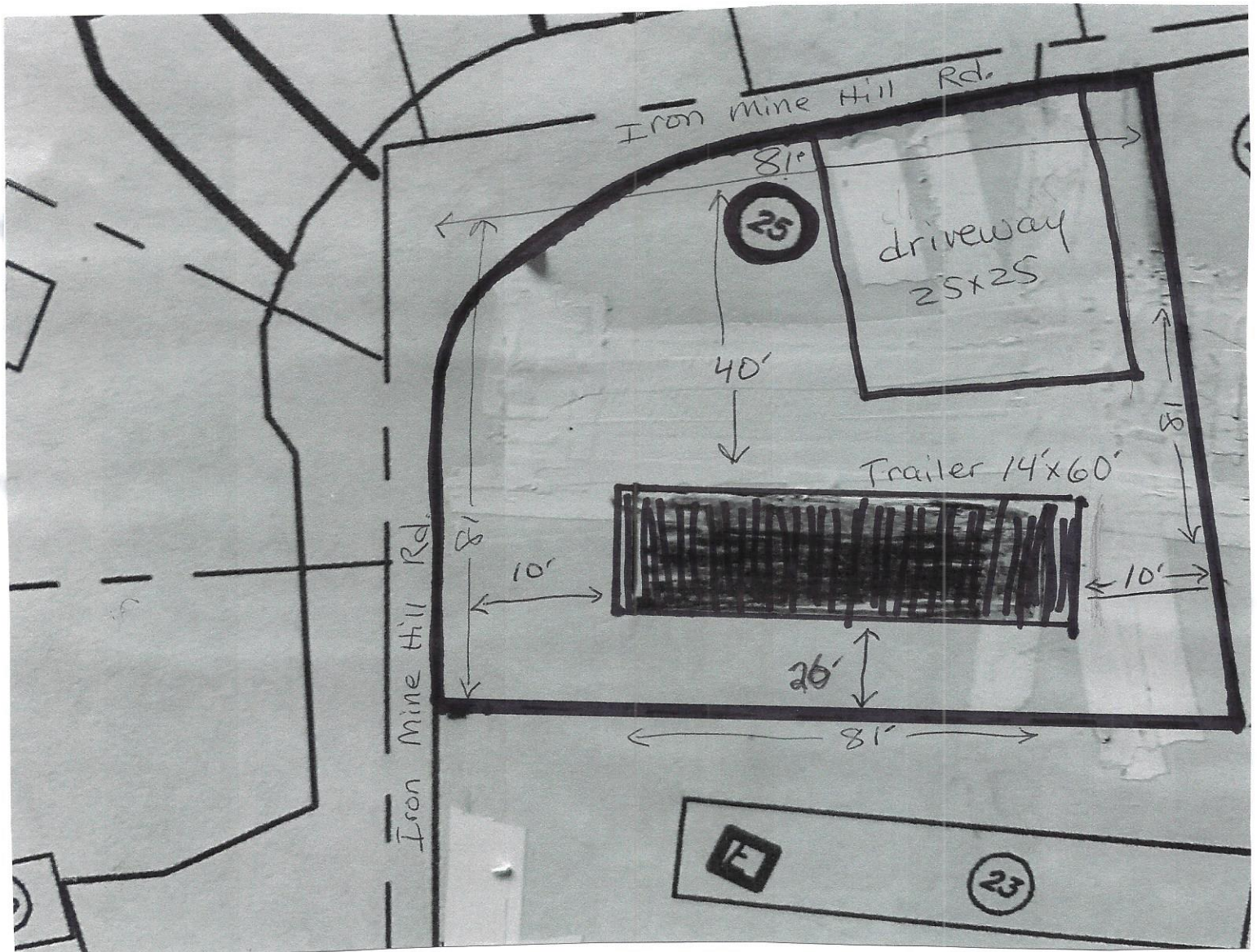
26' set back from Rear

Trailer size 14' x 60' 840sf (maximum size)

Concrete pad 15' x 61'

Driveway size approximate 25' x 25' - to accommodate at least 2 vehicles

Please note trailer placement not to scale





## PROPOSED LOT # 27

**Total Lot Size 5525sf**

65' road frontage on Iron Mine Hill Road

89' Deep Left-side

81' Deep Right-side

65' Backlot

50' set back from street

10' set back from Right

10' set back from Left

16' set back from Rear (Right) 20' Rear (Left)

Trailer size 14' x 60' 840sf (maximum size)

Concrete pad 15' x 61'

Driveway size approximate 20' x 40' - to accommodate at least 2 vehicles

Please note trailer placement not to scale





## PROPOSED LOT # 31

Total Lot Size 7524sf (minus curve Intersection Iron Mine & Williams Ln)

132' road frontage on Iron Mine Hill Road

57' Deep Left-side (road frontage on Williams Lane)

57' Deep Right-side

132' Backlot

20' set back from street

20' set back from Right

41' set back from Left

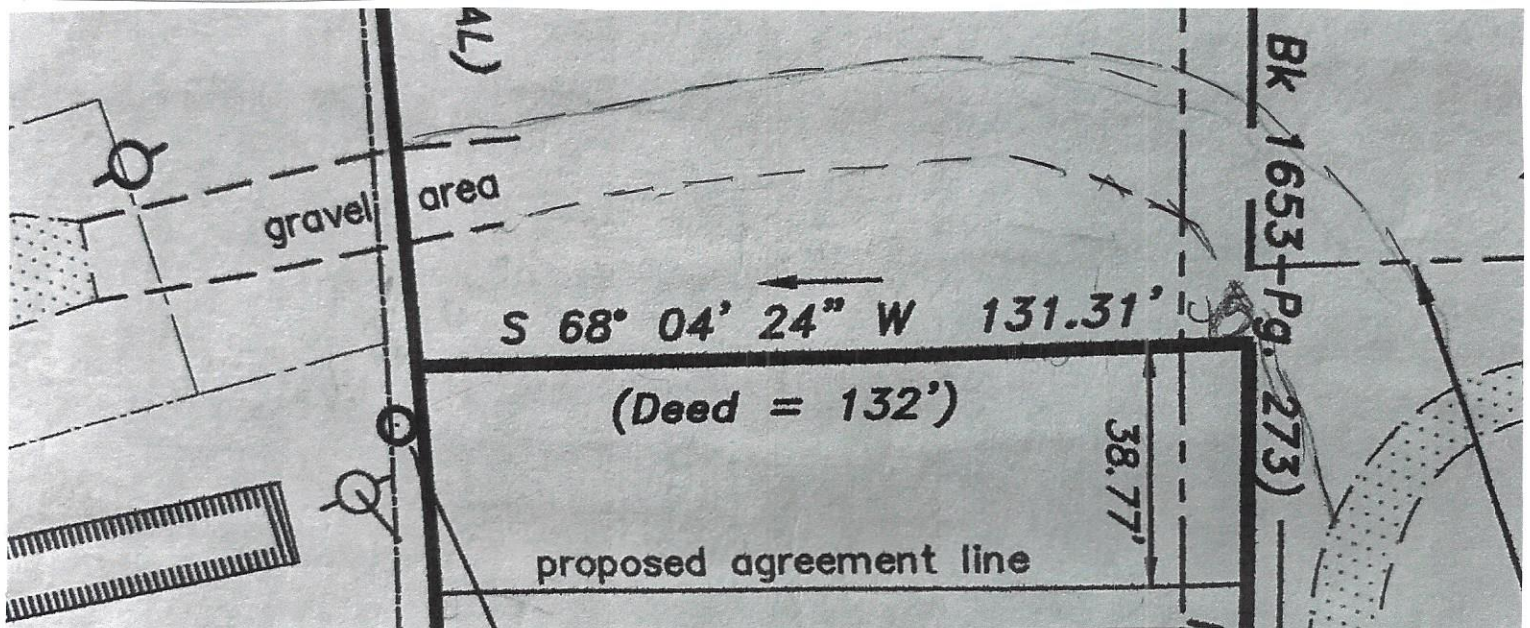
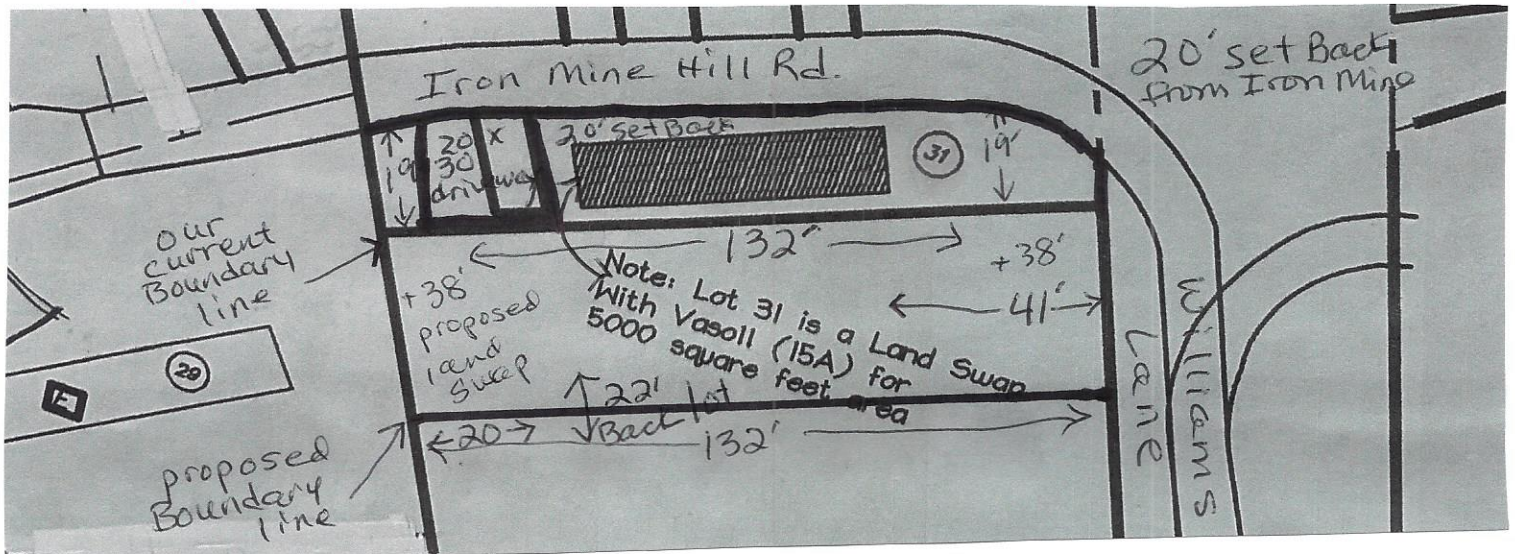
22' set back from Rear

Trailer size 14' x 70' (980sf)

Concrete pad 15' x 71'

Driveway size approximate 20' x 30' - to accommodate at least 2 vehicles

Trailer placement not to scale AND to be on Proposed Land Swap





## PROPOSED LOT # 33

**Total Lot Size 7360 sf**

65' road frontage on Williams Lane

111' Deep Left-side

119' Deep Right-side

63' Back of lot

20' set back from street

34' set back from Right

20' set back from Left

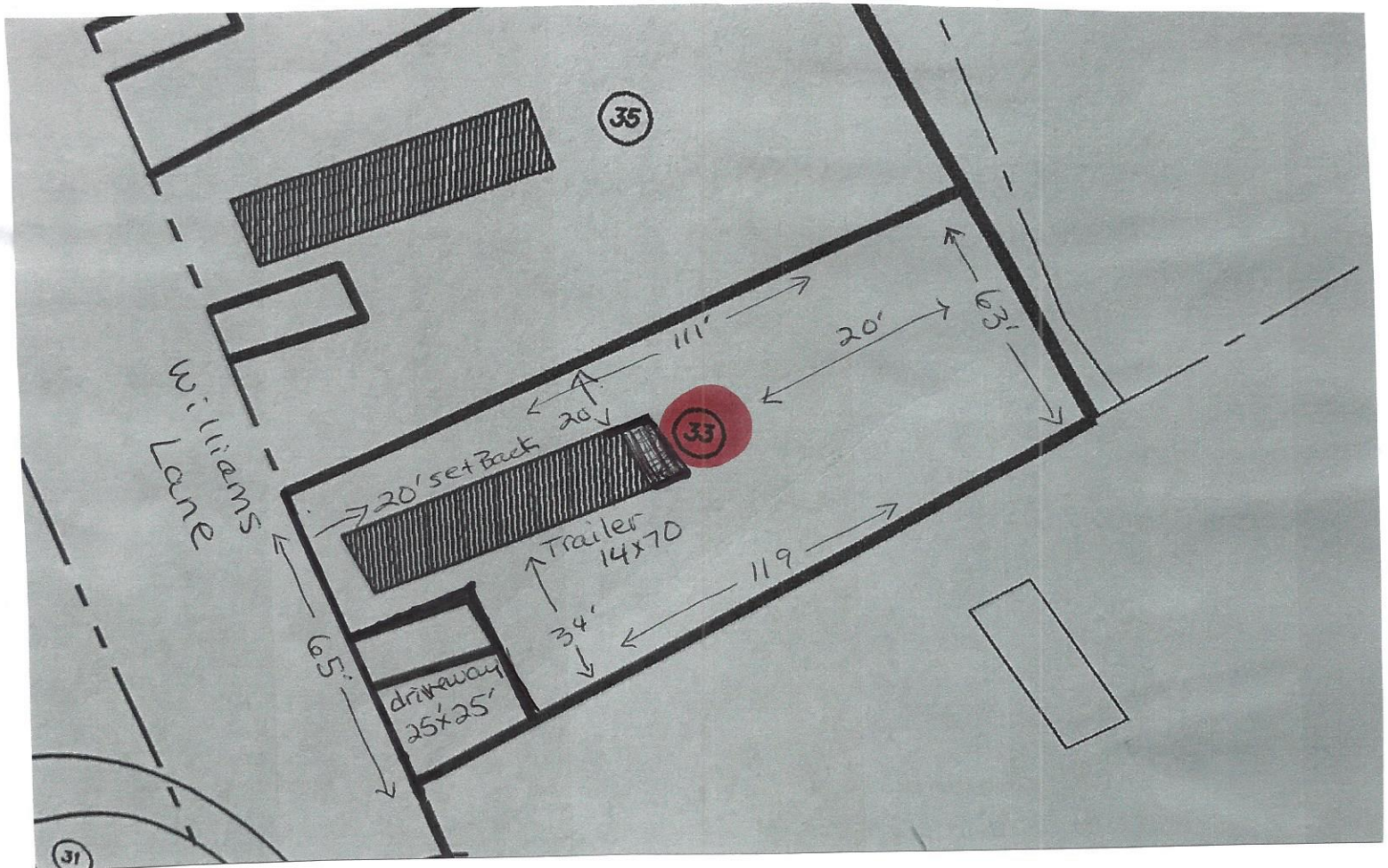
20' set back from Rear

Trailer size 14' x 70' = 980 sf

Concrete pad 15' x 71'

Driveway size approximate 25' X 25'- to accommodate at least 2 vehicles

Please note trailer placement not to scale





## PROPOSED LOT # 34

**Total Lot Size 7085sf**

65' road frontage on Iron Mine Hill Rd

109' Deep Left-side

109' Deep Right-side

65' Back of lot

25' set back from street

15' set back from Right

25' set back from Left

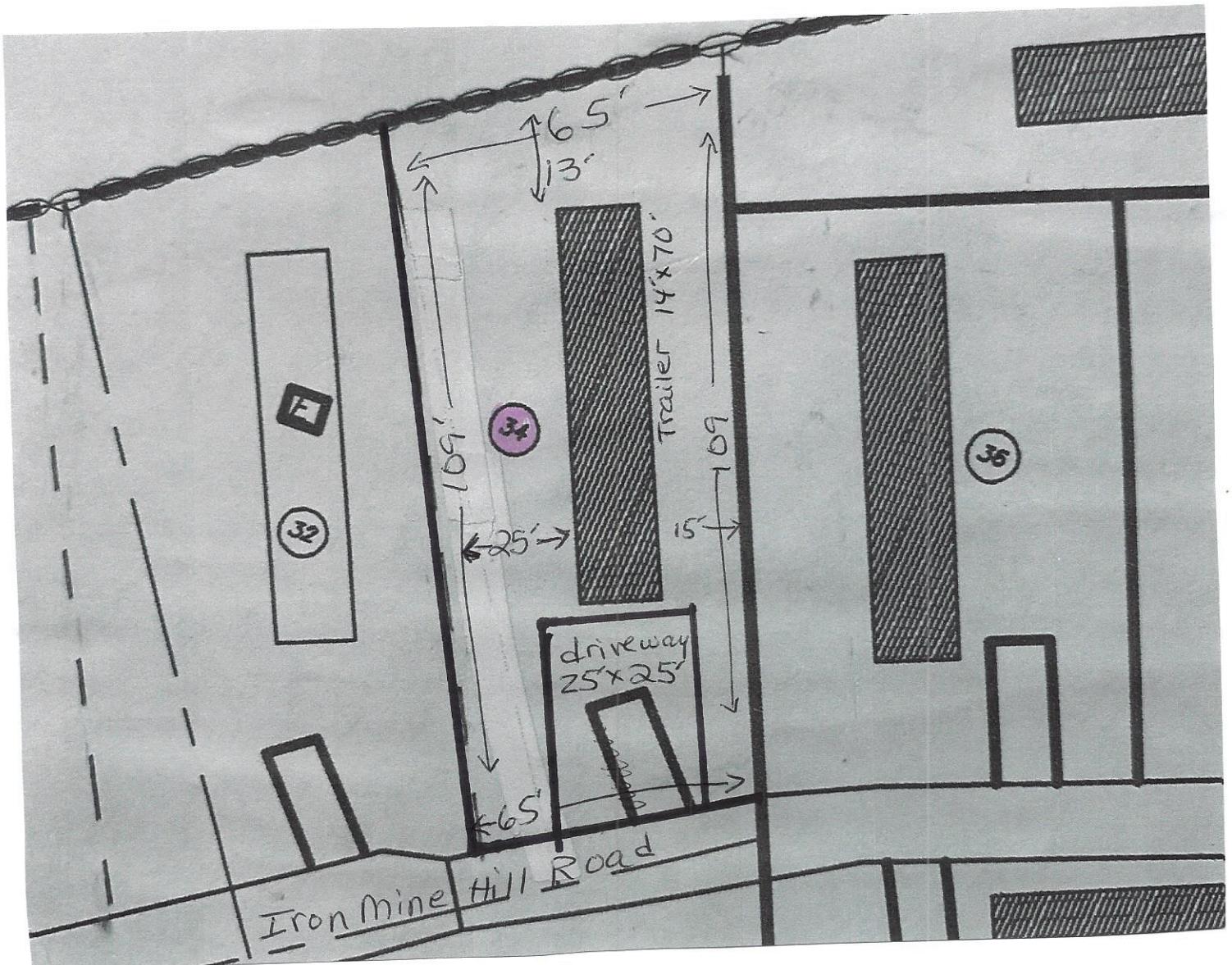
13' set back from Rear

Trailer size 14' x 70' = 980 sf

Concrete pad 15' x 71'

Driveway size approximate 25' x 25' - to accommodate at least 2 vehicles

Please note trailer placement not to scale





## PROPOSED LOT # 35

**Total Lot Size 7150 sf**

65' road frontage on Williams Lane

109' Deep Left-side

111' Deep Right-side

65' Back of lot

20' set back from street

34' set back from Right

20' set back from Left

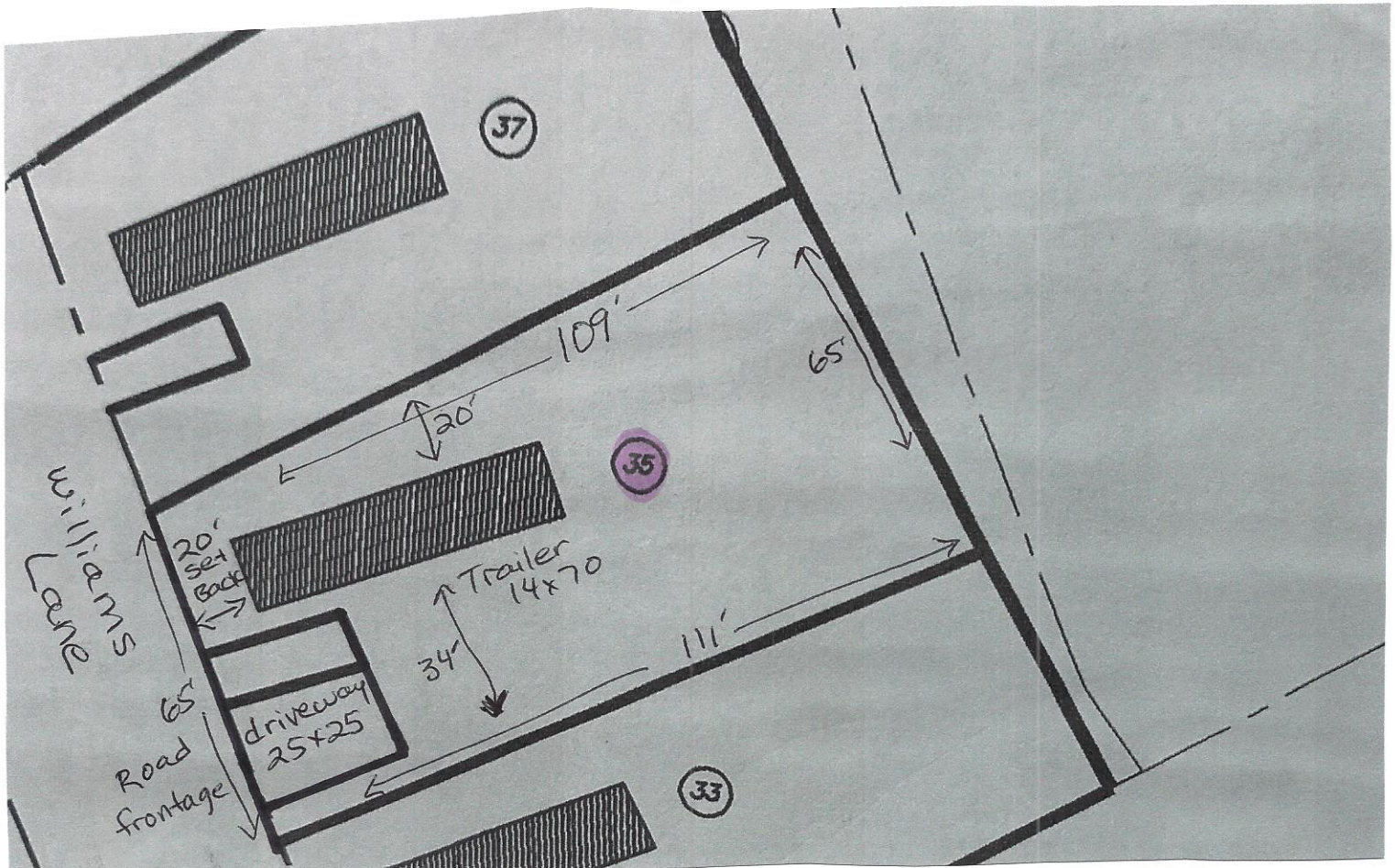
20' set back from Rear

Trailer size 14' x 70' = 980 sf

Concrete pad 15' x 71'

Driveway size approximate 25' X 25'- to accommodate at least 2 vehicles

Please note trailer placement not to scale





## PROPOSED LOT # 36

**Total Lot Size 5544sf**

66' Road Frontage on Iron Mine Hill Rd

84' Deep Left-side

84' Deep Right-side

66' Backlot

20' set back from street

31' set back from Right

20' set back from Left

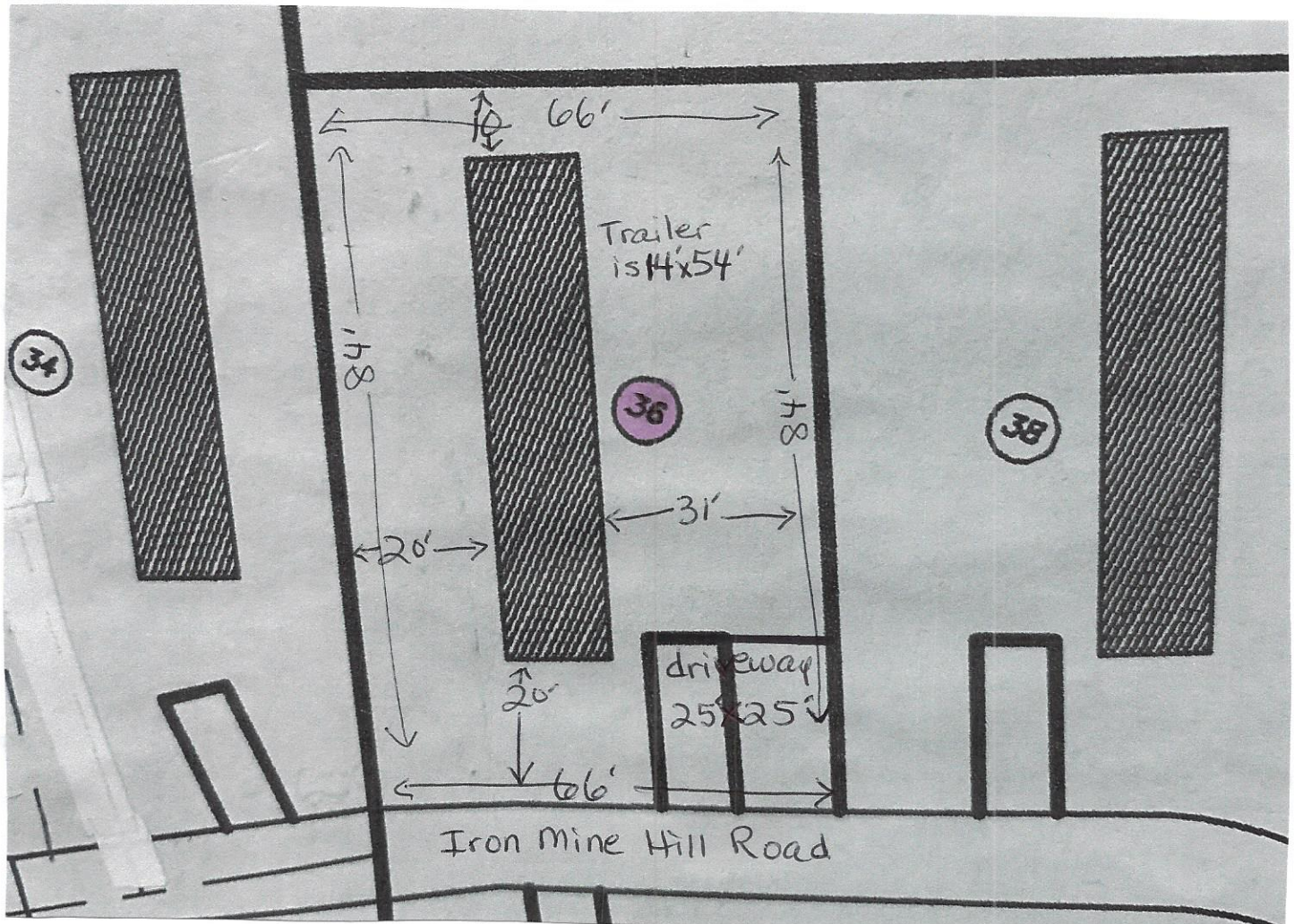
10' set back from Rear

Trailer size 14' x 54' (756sf)

Concrete pad 15' x 54'

Driveway size approximate 25' x 25' - to accommodate at least 2 vehicles

Trailer placement not to scale





## PROPOSED LOT # 37

**Total Lot Size 6875sf**

125' road frontage on Commonwealth

## 55' Deep Left-side

## 55' Deep Right-side

125' Back of lot

20' set back from street (Commonwealth)

34' set back from Right (back of lot from Williams Lane)

20' set back from Left (Williams Lane)

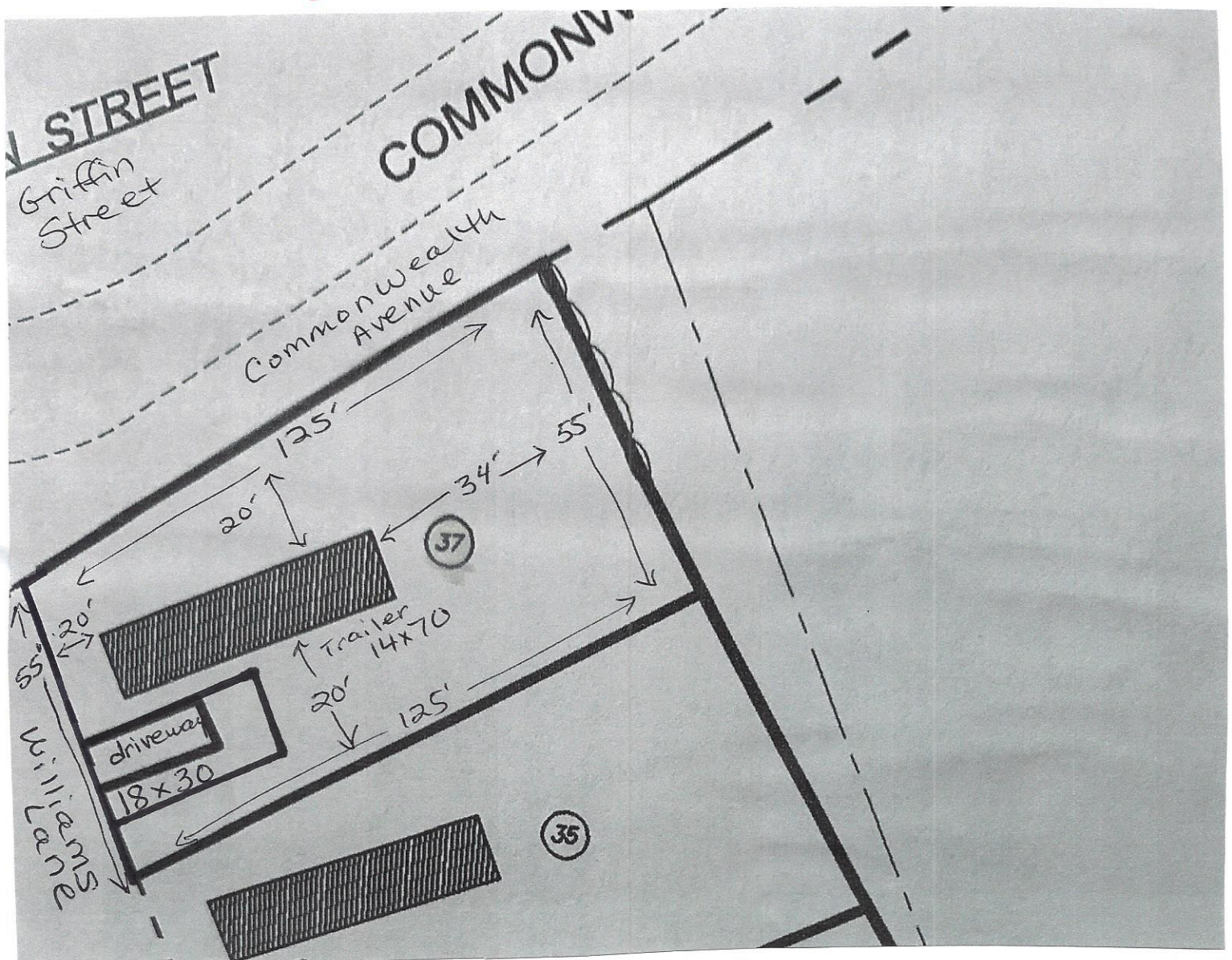
20' set back from Rear (from Commonwealth)

Trailer size 14' x 70' = 980 sf

Concrete pad 15' x 71'

Driveway size approximate 18' x 30'- to accommodate at least 2 vehicles

Please note trailer placement not to scale





## PROPOSED LOT # 38

Total Lot Size 5544sf

66' Road Frontage on Iron Mine Hill Rd

84' Deep Left-side

84' Deep Right-side (William Lane Road Frontage)

66' Backlot

20' set back from street

31' set back from Right

20' set back from Left

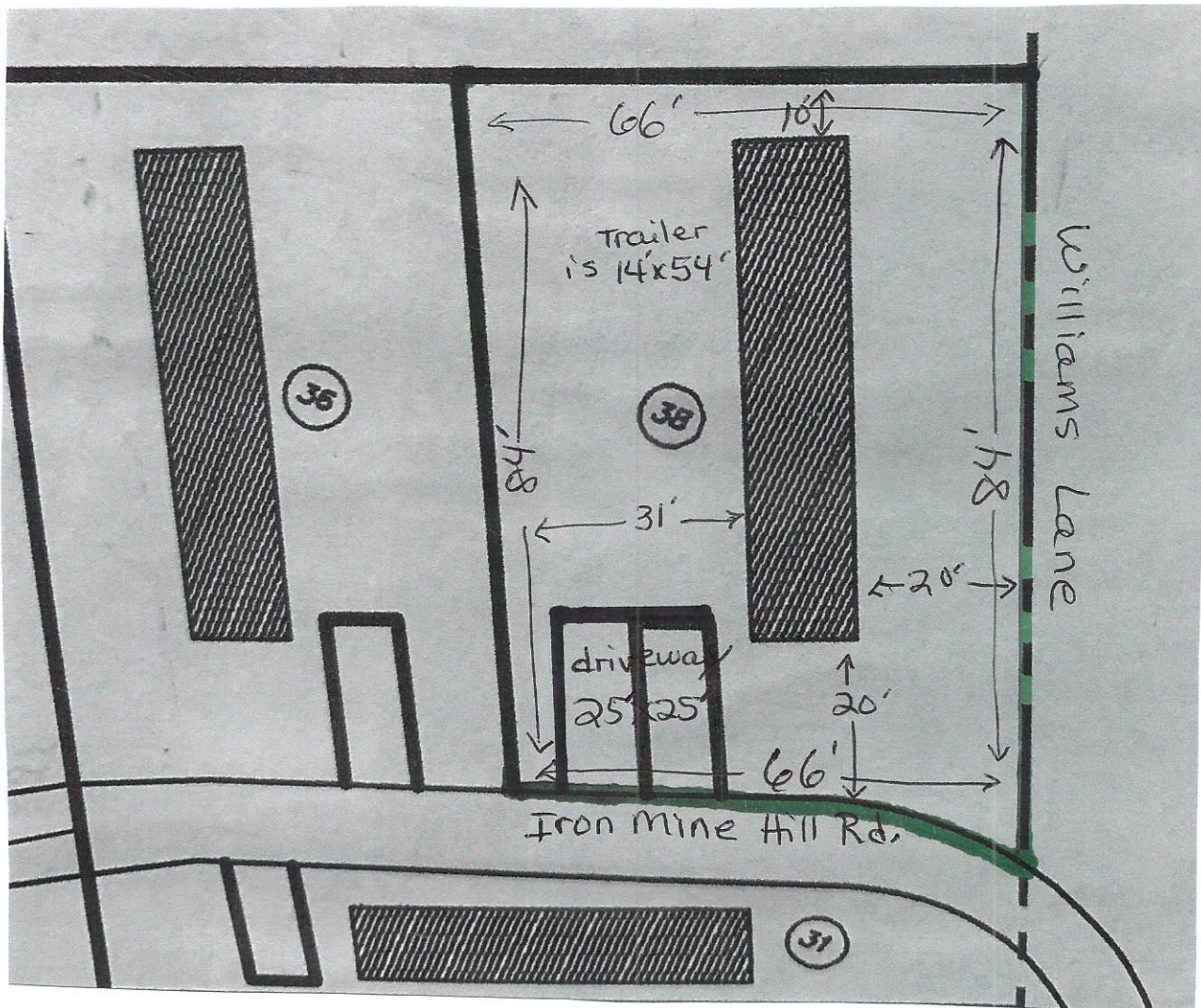
10' set back from Rear

Trailer size 14' x 54' (756sf)

Concrete pad 15' x 54' ,

Driveway size approximate 25' x 25'- to accommodate at least 2 vehicles

Trailer placement not to scale





## PROPOSED LOT # 39

**Total Lot Size 6175sf**

65' road frontage on Williams Lane

130' Deep Left-side

130' Deep Right-side

30' Back of lot

25' set back from street

20' set back from Right

15' set back from Left

34' set back from Rear

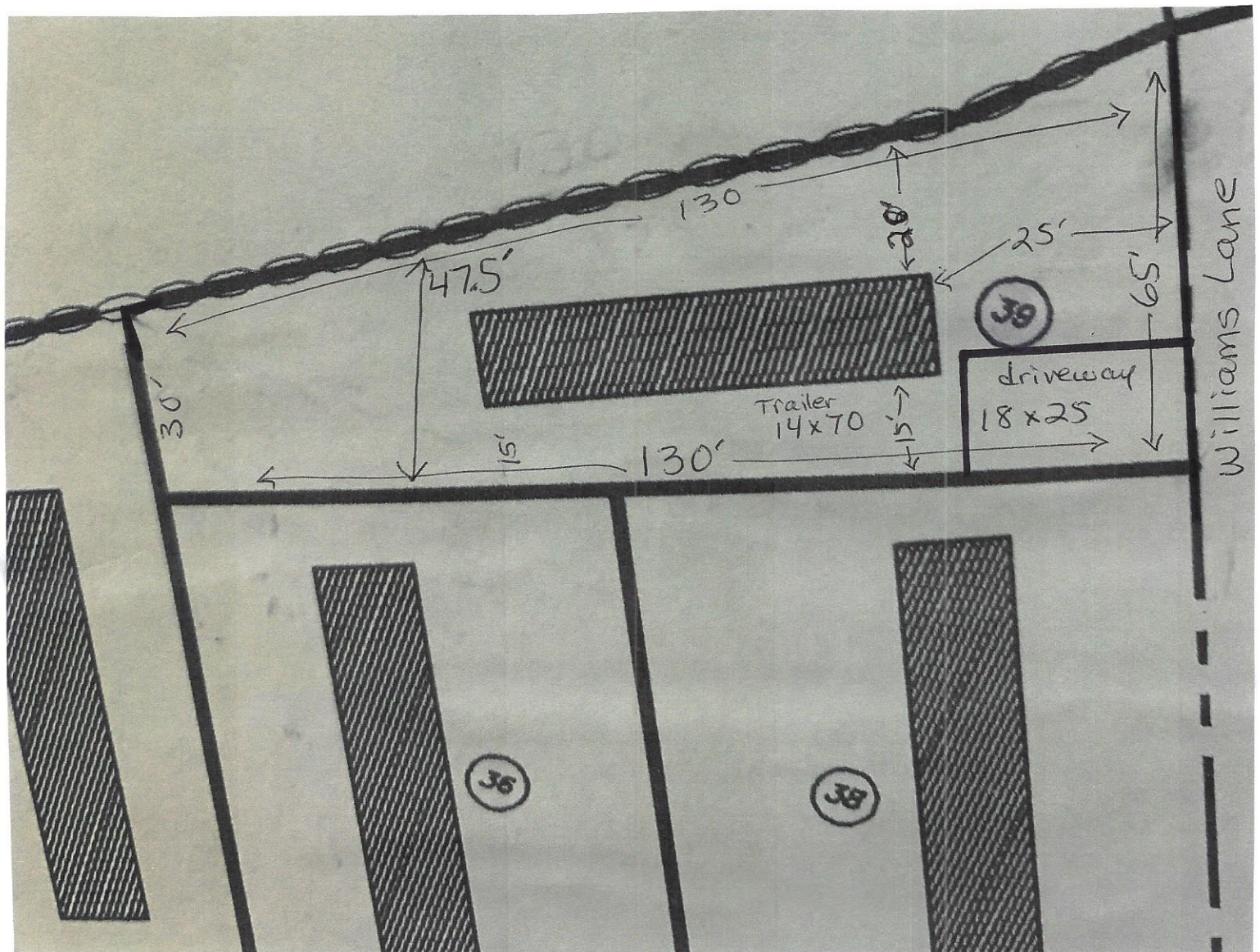
Trailer size 14' x 70' = 980 sf living space

Concrete pad 15' x 71'

Driveway size approximate 18' x 25' - to accommodate at least 2 vehicles

Please note trailer placement not to scale

Width between boundary lines at rear of trailer is 47.5'  
still meets set back requirements 15' Left - 17.5' Right





## PROPOSED LOT # 40

Total Lot Size 8515sf

65' road frontage on Williams Lane

131' Deep Left-side

131' Deep Right-side

65' Back lot

30' set back from street

10' set back from Right

40' set back from Left

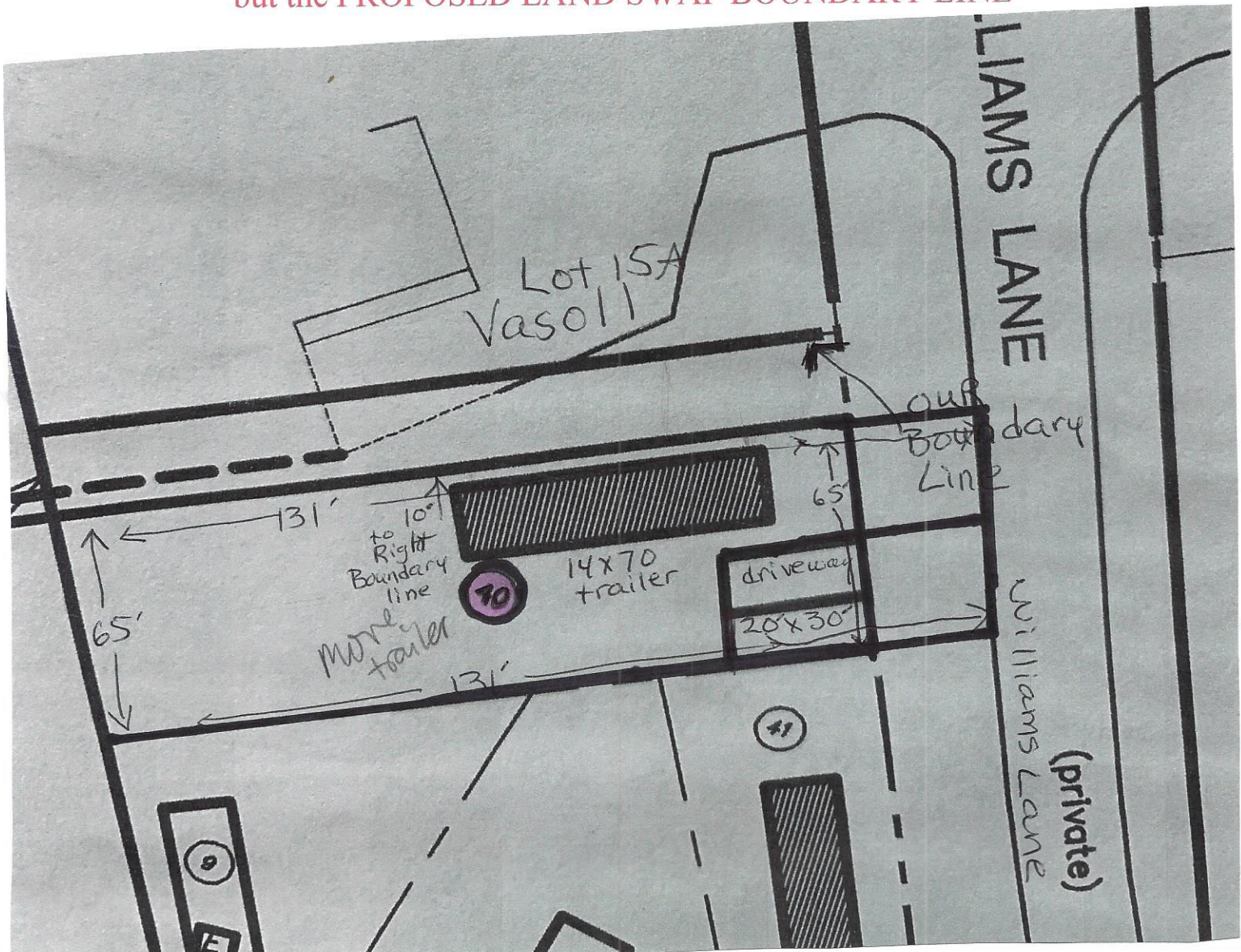
30' set back from Rear

Trailer size 14' x 70' = 980 sf living space

Concrete pad 15' x 71'

Driveway size approximate 20' x 30' - to accommodate at least 2 vehicles

Please note trailer placement not to scale AND we are NOT using our boundary line  
but the PROPOSED LAND SWAP BOUNDARY LINE





## PROPOSED LOT # 41

**Total Lot Size 7000sf**

125' road frontage on Williams Lane

67' Deep Left-side

45' Deep Right-side

125' Backlot

20' set back from street

20' set back from Right

34' set back from Left

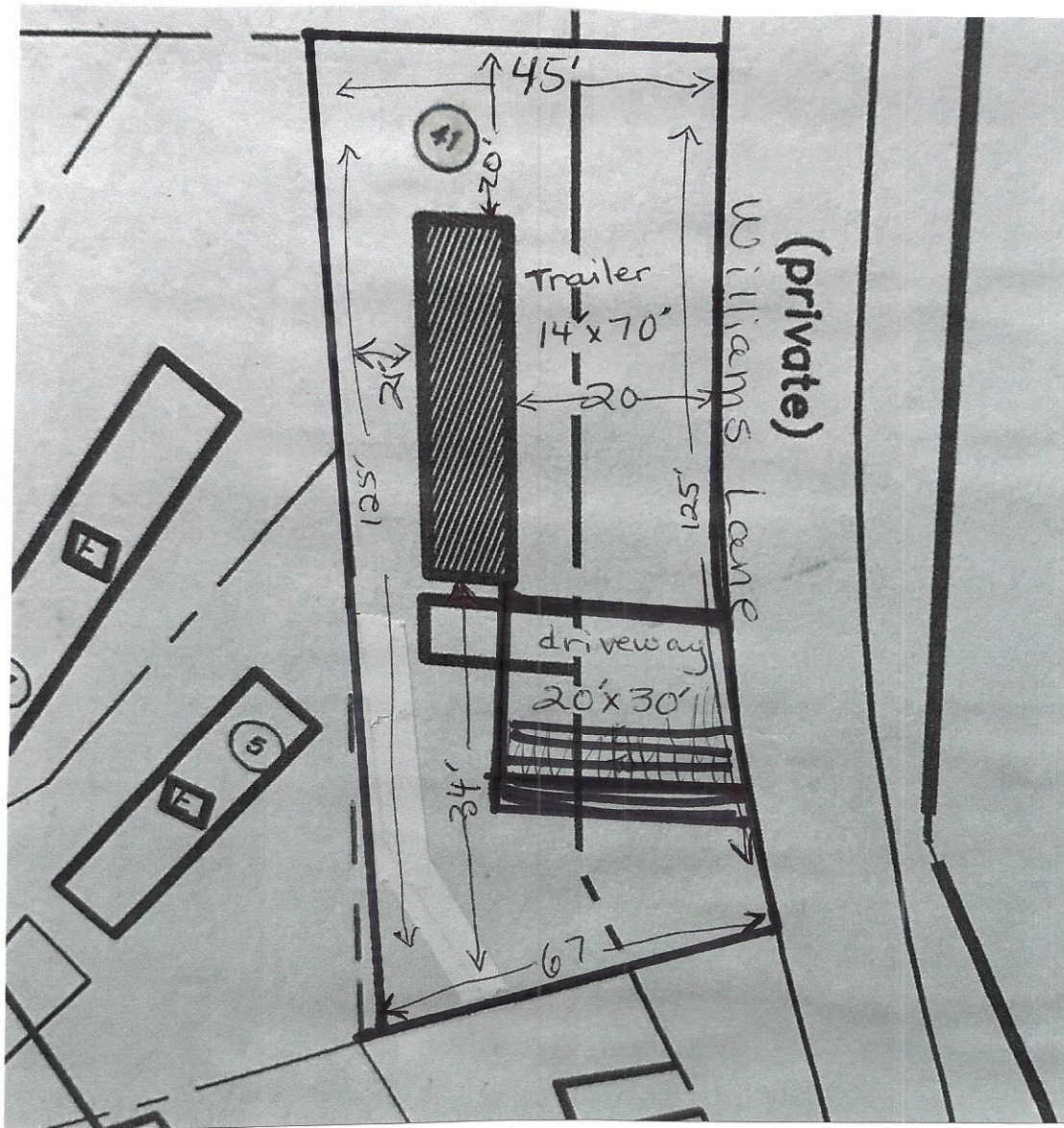
21' set back from Rear

Trailer size 14' x 70' (980sf)

Concrete pad 15' x 71'

Driveway size approximate 20' x 30' - to accommodate at least 2 vehicles

Trailer placement not to scale





## PROPOSED LOT # 42

Total Lot Size 6670sf

115' road frontage on Williams Lane

49' Deep Left-side

67' Deep Right-side

115' Backlot

20' set back from street

24' set back from Right

20' set back from Left

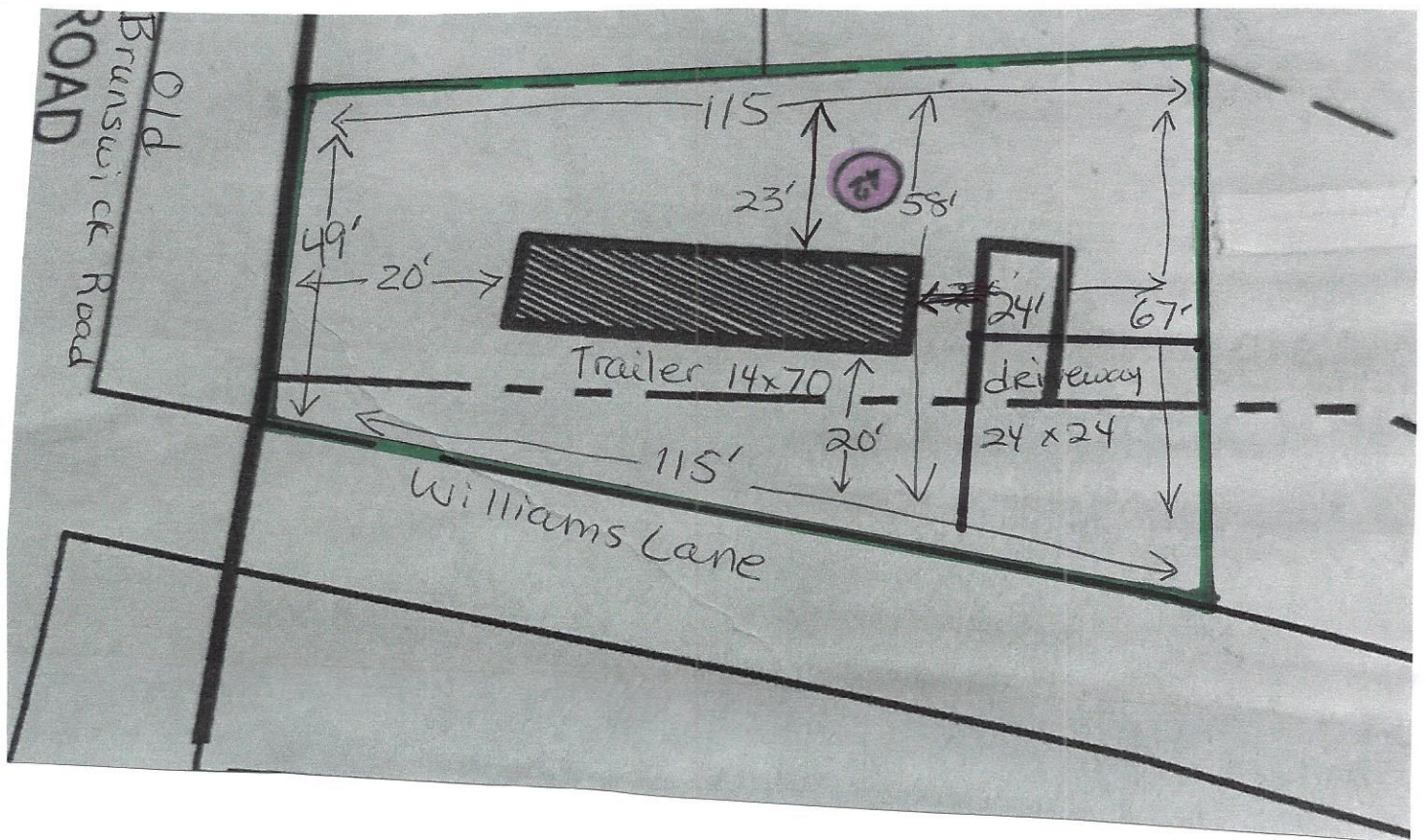
23' set back from Rear

Trailer size 14' x 70' (980sf)

Concrete pad 15' x 71'

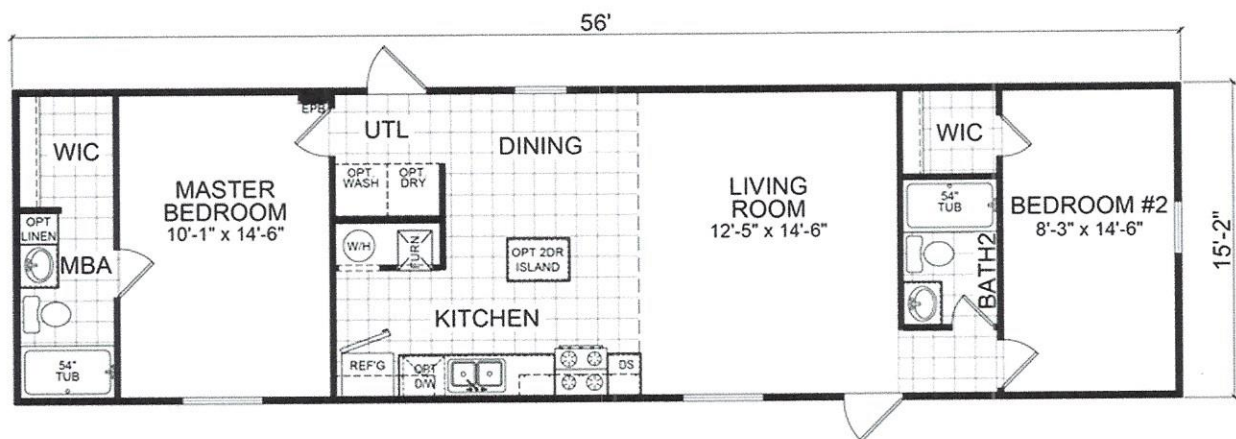
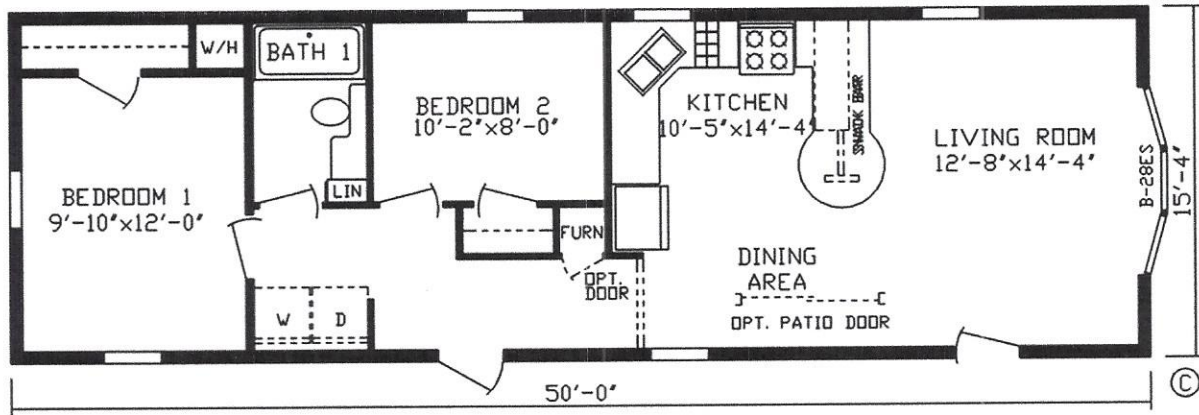
Driveway size approximate 24' x 24' - to accommodate at least 2 vehicles

Trailer placement not to scale





# Examples + Sizes



14CO6001

14'x60' - 840sqft

