

# CITY OF GARDINER

The Gardiner Historic Preservation Commission works to promote and preserve the unique historic and architectural heritage of the designated Water Street preservation district.

## CERTIFICATE OF APPROPRIATENESS APPLICATION/NOTIFICATION FORM

APPLICANT'S NAME: Johnson Hall Redevelopment LLC PHONE#: 207 582 7144  
MAILING ADDRESS: PO Box 777, Gardiner ME, 04345 MAP/LOT: 034/110  
PROPERTY LOCATION: 280 Water Street, Gardiner ME ZONING DISTRICT: 17  
PROPERTY OWNER'S NAME: Mike Miclon, Artistic Director PHONE#: 514 6070  
MAILING ADDRESS: \_\_\_\_\_  
NATURE OF REQUEST: Certificate of Appropriateness for the Rehabilitation of the Theater  
see attached info for scope of work

### FOR CODE ENFORCEMENT USE ONLY

DATE REVIEWED BY CEO/PLANNING STAFF: 3/29/22

A Certificate of Appropriateness is required by the Gardiner Land Use Ordinance, Section 12.6 involving exterior changes:

Alterations  New Construction  Demolition  Relocation  Additions  Other \*

\* (Similar activity associated with any exterior architectural feature for a building, site, sign, monument or structure)

The Secretary of the Interior's Standards for the Treatment of Historic Properties with Guidelines for:

Preserving  Rehabilitating  Restoring  Reconstructing

Does the proposed use require a Zoning Variance or a Site Plan Review Permit? YES If so, what for?

Flood plain variance

Was the variance requested/granted? \_\_\_\_\_ If so, the date granted \_\_\_\_\_

The next Historic Preservation Commission Meeting is: \_\_\_\_\_

Signed: [Signature]  
Kristopher McNeill, Code Enforcement Officer

To apply to the historic preservation commission for a certificate of appropriateness, please sign below and submit this completed application, to include a scaled drawing of the proposed activity, materials description/list, photographs current and historic of building/area and other applicable materials along with an additional 9 copies and the \$50.00 fee, at least 21 days prior to the scheduled meeting date to the code enforcement office.

The undersigned hereby applies for a Certificate of Appropriateness for the work described above. I have received the Certificate of Appropriateness Application and will attend the Historic Preservation Commission meeting listed above.

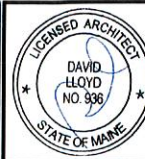
Owner's Signature

Applicant Signature

## Johnson Hall renovation- Scope of exterior work

The front façade of Johnson Hall will receive a new storefront system. The system will be black aluminum framed with insulated, double paned glass. It is replacing the existing storefront system. Additionally, there will be two signage lights installed above the second story windows, to the right side of the building to illuminate the existing signage. The windows were done in the first phase, so no window work will be needed.

At the rear façade there are three points of work. The first is the exit door to the right side of the building. This door will be refurbished and remain in use. The second point of work will be the widening of the existing opening to the right of the arched window at street level. This will be enlarged to fit a hollow metal door, 4' wide and 6' tall to allow the largest opening for equipment to get in and out of the loading antechamber servicing the material lift that brings items to the stage. The new door style matches existing. The third point of work are the three lighting fixtures between the second and third story windows. These are flood lights illuminating all entrances/exits and architectural elements such as the arched window.



Johnson Hall  
280 WATER ST.  
GARDINER, ME 04345

Consultant:

ARCHETYPE  
ARCHITECTS  
48 Union Wharf  
Portland, ME 04101

Project:  
JOHNSON HALL  
280 Water Street Gardiner, Maine

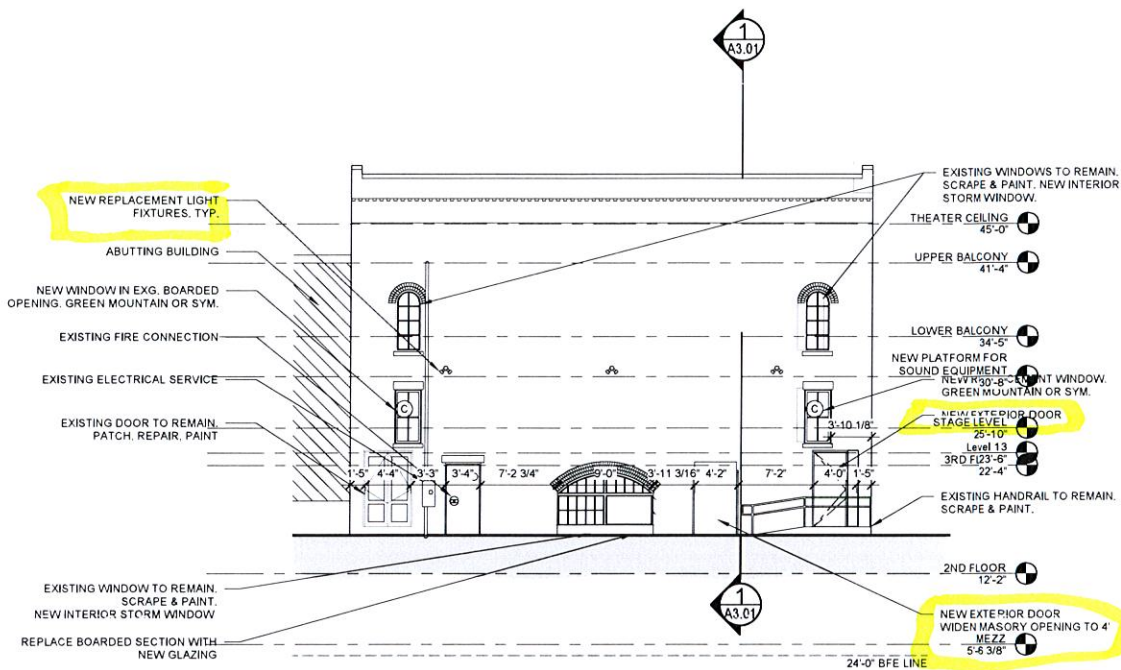
Revisions:

Scale: 1/8" = 1'-0"

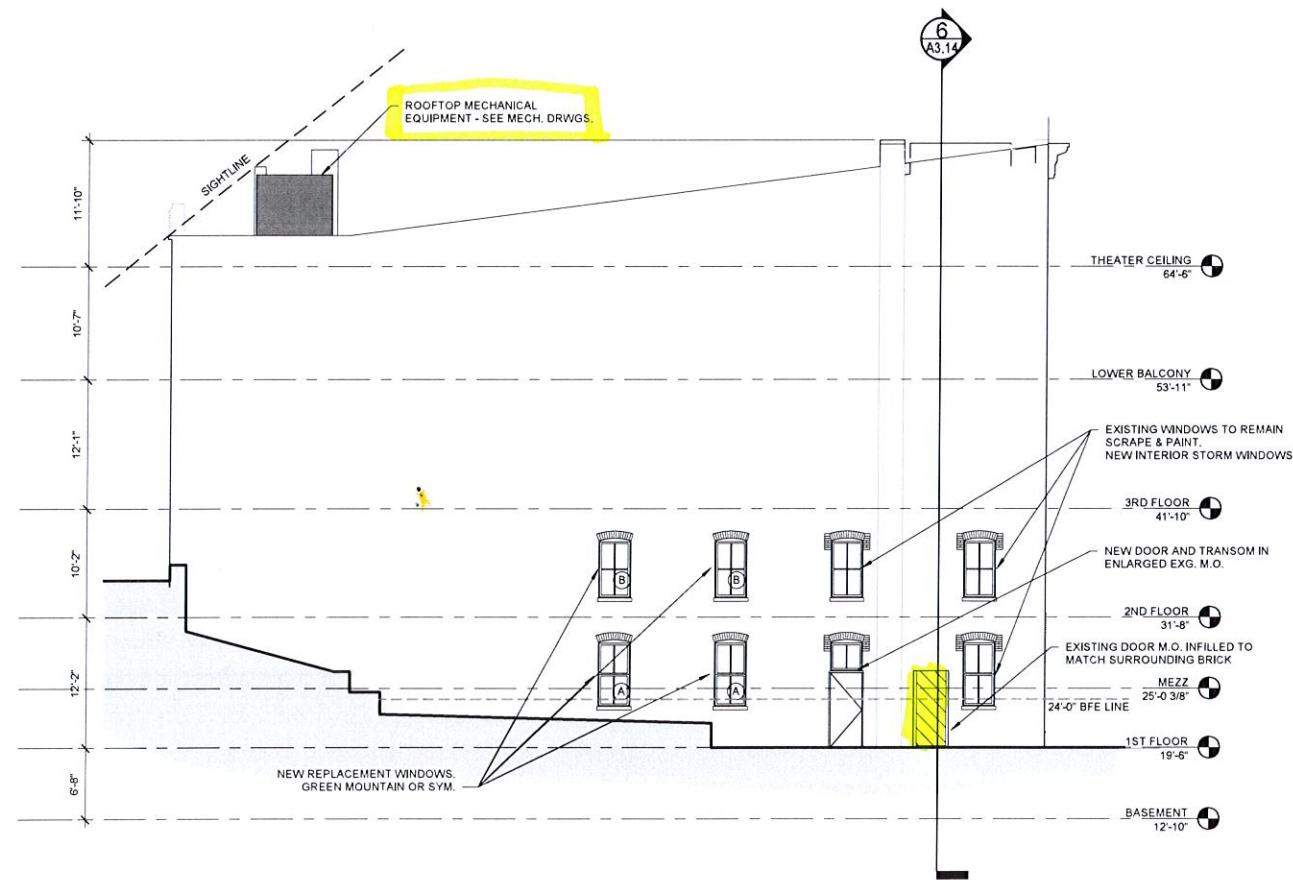
Date: 11 MAR 2022

BUILDING  
ELEVATIONS

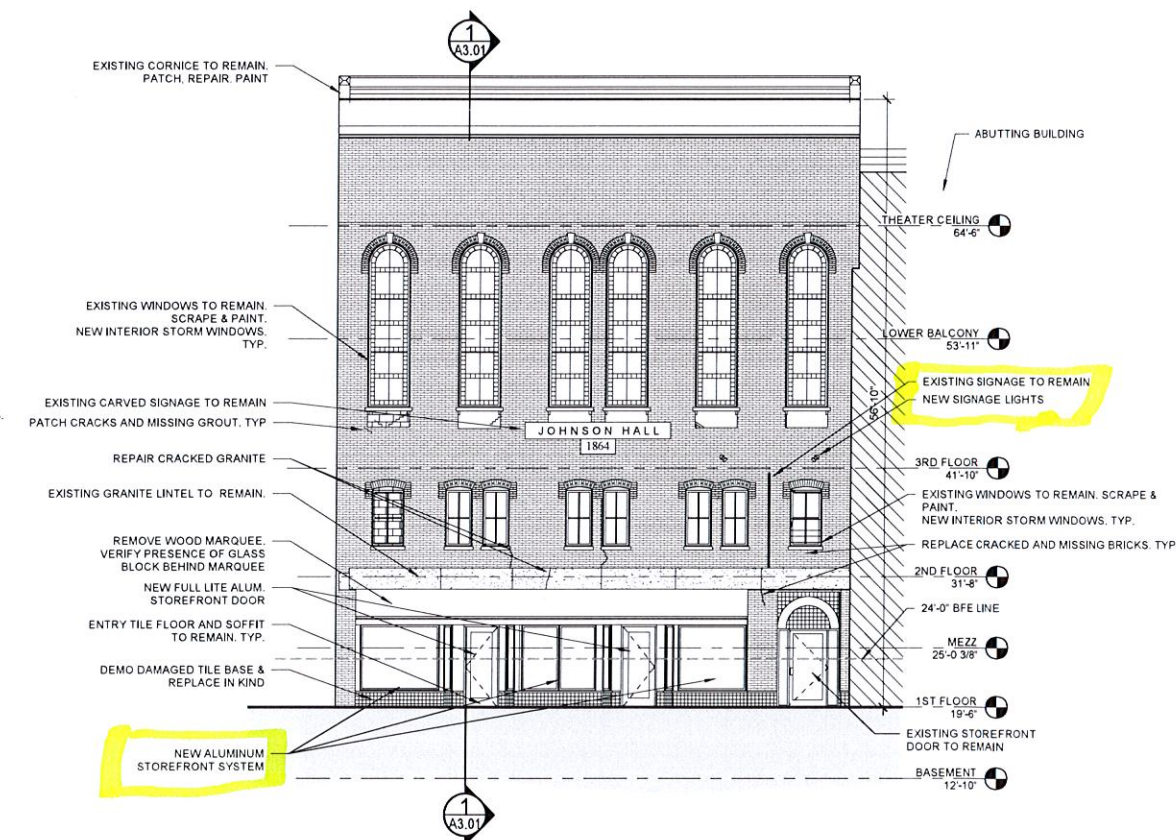
A2.01



3 | WEST ELEVATION  
1/8" = 1'-0"



2 | SOUTH ELEVATION  
1/8" = 1'-0"

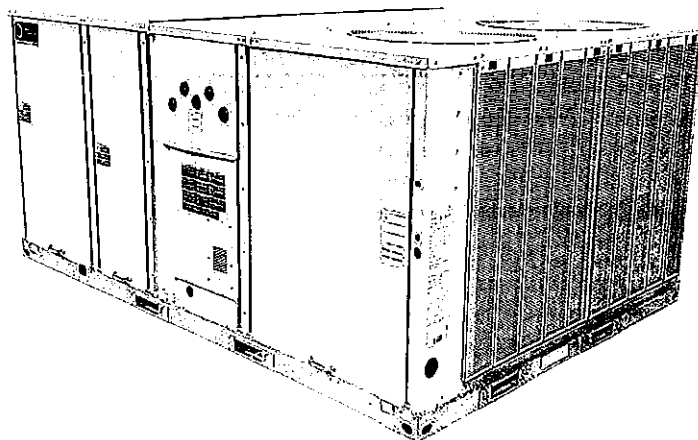
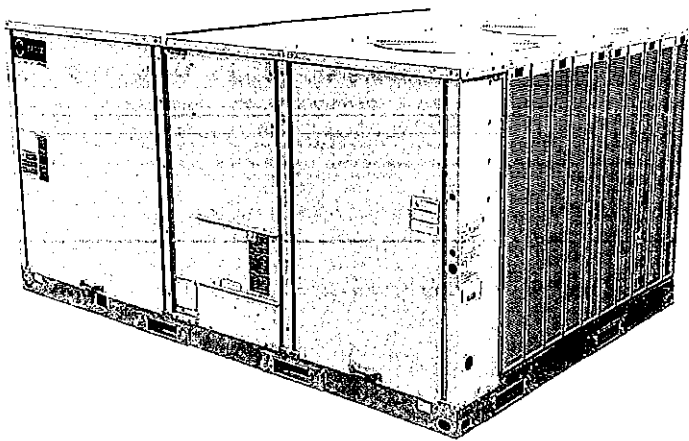


1 | EAST ELEVATION  
1/8" = 1'-0"



Product Catalog

# Packaged Rooftop Air Conditioners Voyager™ Light Commercial — Cooling, Gas/Electric 12.5 to 25 Tons, 60 Hz





F3L161A

F3L161A

YFD2A1CALLC A

7161022610

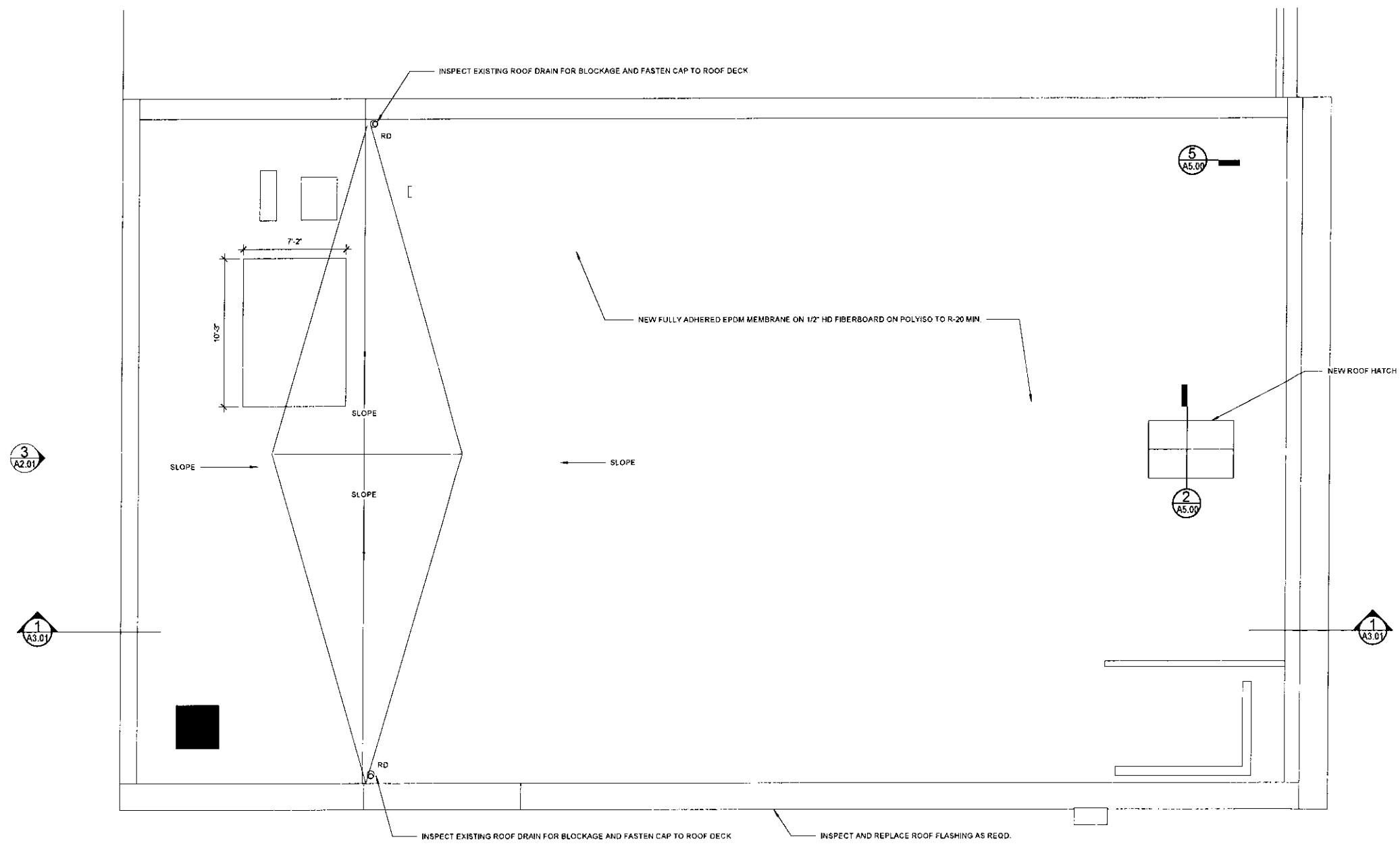
7161022610

92569

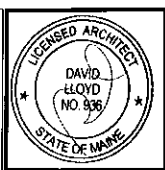
92569







1 | ROOF PLAN  
1/4" = 1'-0"



Prepared For  
**Johnson Hall**  
Address  
City, State

Consultant:  
**ARCHETYPE ARCHITECTS**  
48 Union Wharf Portland, Maine 04101  
207.772.9022 archetype@archetypepa.com

Project:  
**JOHNSON HALL**  
280 Water Street Gardiner, Maine

Date  
11 MAR 2022

Scale  
1/4" = 1'-0"

ROOF PLAN

**A1.05**



TRIFAB® VG (VERSAGLAZE®)  
TRIFAB® VG 450, 451 & 451T (THERMAL) FRAMING SYSTEMS &  
TRIFAB® 451UT (ULTRA THERMAL) FRAMING SYSTEM



# Design + Performance Versatility with Unmatched Fabrication Flexibility



Geisinger Professional Building  
Jenkins Township, Pennsylvania  
ARCHITECT  
Mericle Commercial Real Estate Services  
Wilkes-Barre, Pennsylvania  
GLAZING CONTRACTOR  
Sterling Glass, Inc., Scranton, Pennsylvania  
PHOTOGRAPHER  
© Perzel Photography Group

Trifab® VersaGlaze® is built on the proven and successful Trifab® platform – with all the versatility its name implies. There are enough framing system choices, fabrication methods, design options and performance levels to please the most discerning building owner, architect and installer. The 4.5" depth Trifab® VersaGlaze® Framing System family is available with non-thermal, thermal and ultra-thermal performance levels. The ultra-thermal Trifab® 451UT Framing System, is designed for the most demanding thermal performance and employs a dual Isolock® thermal break.

## AESTHETICS

Trifab® VersaGlaze® Framing Systems offer designers a choice of front-, center-, back- or multi-plane glass applications. Structural silicone

glazing (SSG) and weatherseal glazing options further expand designers' choices, allowing for a greater range of possibilities for specific project requirements and architectural styles. All systems have a 4-1/2" frame depth; Trifab® VersaGlaze® 450 has 1-3/4" sightlines, while Trifab® VersaGlaze® 451/451T and Trifab® 451UT have 2" sightlines.

With seamless incorporation of Kawneer entrances or windows, including GLASSvent® visually frameless ventilators, Trifab® framing can be used on almost any project. These framing systems can also be packaged with Kawneer curtain walls and overhead glazing, thereby providing a full range of proven, and tested, quality products for the owner, architect and installer from a single-source supplier.

## ECONOMY

Trifab® VersaGlaze® 450/451/451T/451UT Framing Systems offer a variety of fabrication choices to suit your project:

- **Screw Spline** – for economical continuous runs utilizing two-piece vertical members that provide the option to pre-assemble units with controlled shop labor costs and smaller field crews for handling and installation. (available for all systems)
- **Shear Block** – for punched openings or continuous runs using tubular moldings with shear block clips that provide tight joints for transporting large pre-assembled multi-lite units. (available for 450/451/451T systems)
- **Stick** – for fast, easy field fabrication. Field measurements and material cuts can be done when metal is on the jobsite. (available for 450/451/451T systems)
- **Pre-glazed** – The combination of screw spline construction with pre-glazing in the shop accelerates installation and reduces field labor time while minimizing disruption to the surrounding area or existing tenants. Making it an exceptional choice for new or retrofit applications, particularly in urban areas or where space is limited. (available for 451/451T/451UT framing)



Brighton Landing  
Cambridge, Massachusetts

ARCHITECT  
ADD Inc., Cambridge, Massachusetts  
GLAZING CONTRACTOR  
Ipswich Bay Glass Company, Inc., Rowley, Massachusetts  
PHOTOGRAPHER  
© Gordon Schenck, Jr.

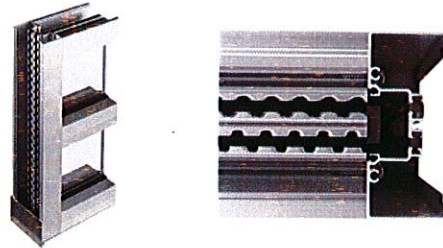
All systems can be flush glazed from either the inside or outside. The weatherseal option provides an alternative to SSG vertical mullions for Trifab® VersaGlaze® 450/451/451T. This ABS/ASA rigid polymer extrusion allows complete inside glazing and creates a flush glass appearance on the building exterior without the added labor of scaffolding or swing stages. Additionally, high-performance flashing options are engineered to eliminate perimeter sill fasteners and associated blind seals.

## FOR THE FINISHING TOUCH

Architectural Class I anodized aluminum and painted finishes in fluoropolymer (AAMA 2605) and solvent-free powder coatings (AAMA 2604) offer a variety of color choices.

## PERFORMANCE

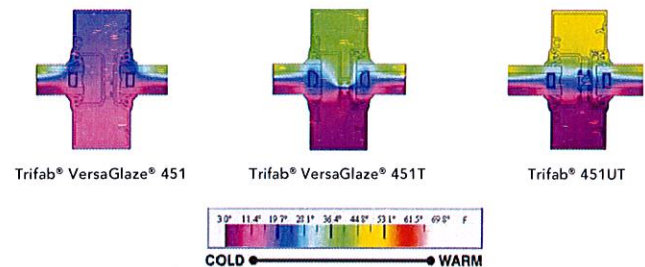
Kawneer's Isolock® thermal break technology creates a composite section, prevents dry shrinkage and is available on Trifab® VersaGlaze® 451T. For even greater thermal performance, a dual Isolock® thermal break is used on Trifab® 451UT.



Trifab® 451UT uses a dual Isolock® thermal break (right) and features a new high-performance sill design, which incorporates a screw-applied end dam (left), ensuring positive engagement and tight joints between the sill flashing and end dam.

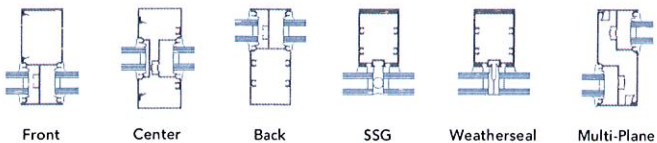
U-factor, CRF values and STC ratings for Trifab® framing systems vary depending upon the glass plane application. Project-specific U-factors can be determined for each individual project. (See the Kawneer Architectural Manual or Kawneer.com for additional information.)

Thermal simulations showing temperature variations from exterior/cold side to interior/warm side.

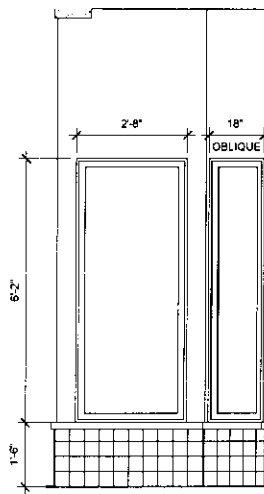


## PERFORMANCE TEST STANDARDS

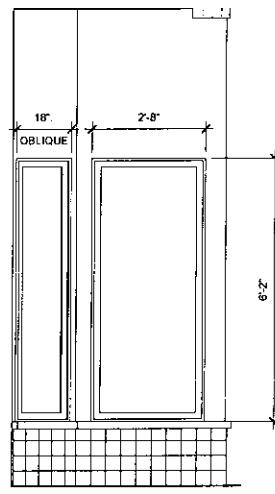
Air Infiltration	ASTM E283
Water	AAMA 501, ASTM E331
Structural	ASTM E330
Thermal	AAMA 1503
Thermal Break	AAMA 505, AAMA TIR-A8
Acoustical	AAMA 1801, ASTM E1425



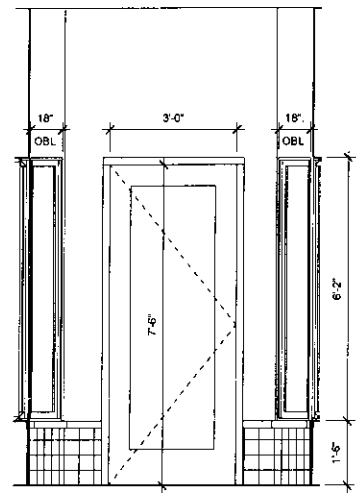
NOTE  
CONTRACTOR TO VERIFY ALL ROUGH  
OPENINGS AND OTHER DIMENSIONS PRIOR  
TO ORDERING STOREFRONT SYSTEM



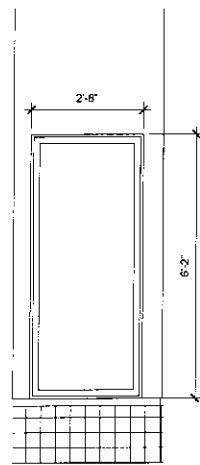
10 | STOREFRONT ELEVATION  
1/2" = 1'-0"



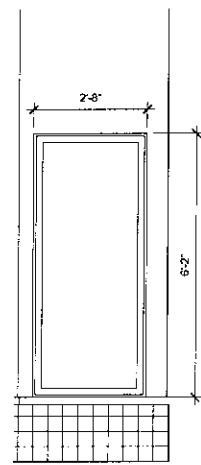
9 | STOREFRONT ELEVATION  
1/2" = 1'-0"



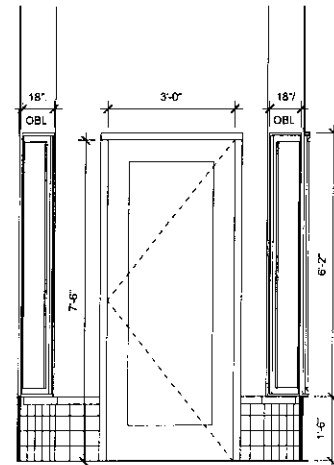
8 | STOREFRONT ELEVATION  
1/2" = 1'-0"



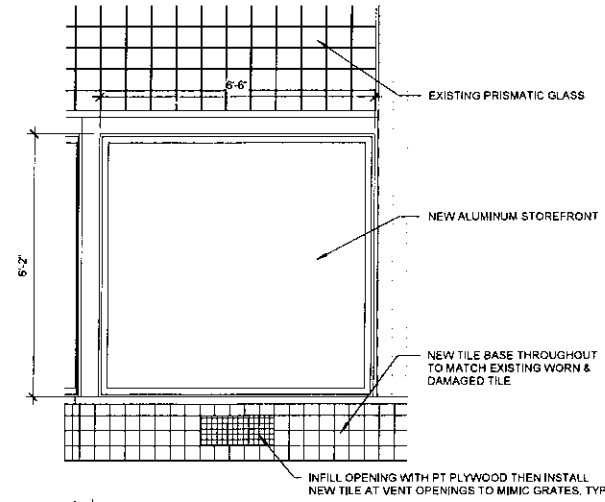
7 | STOREFRONT ELEVATION  
1/2" = 1'-0"



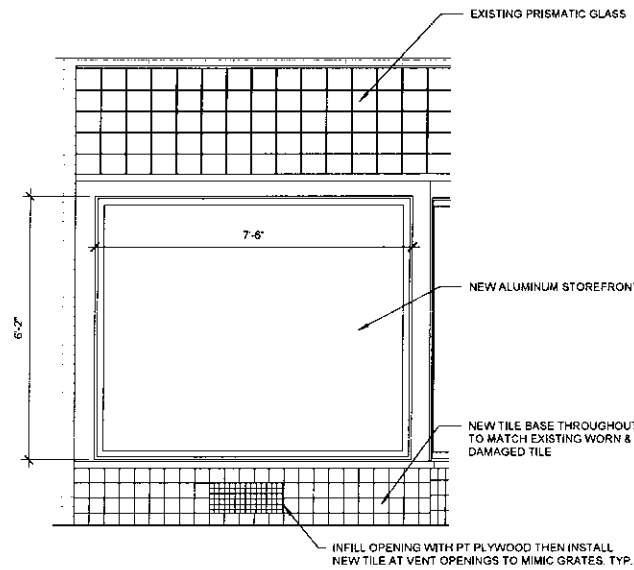
6 | STOREFRONT ELEVATION  
1/2" = 1'-0"



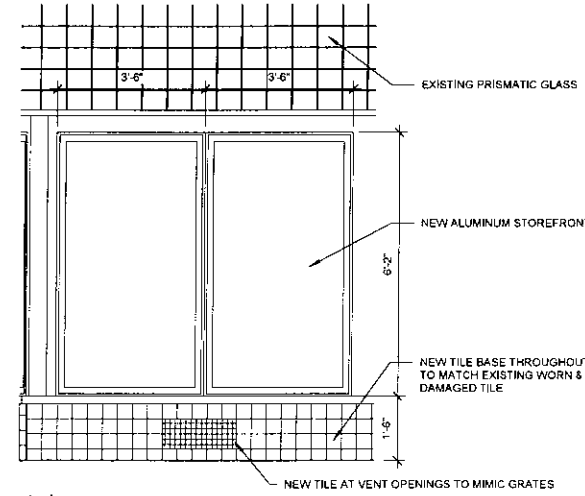
5 | STOREFRONT ELEVATION  
1/2" = 1'-0"



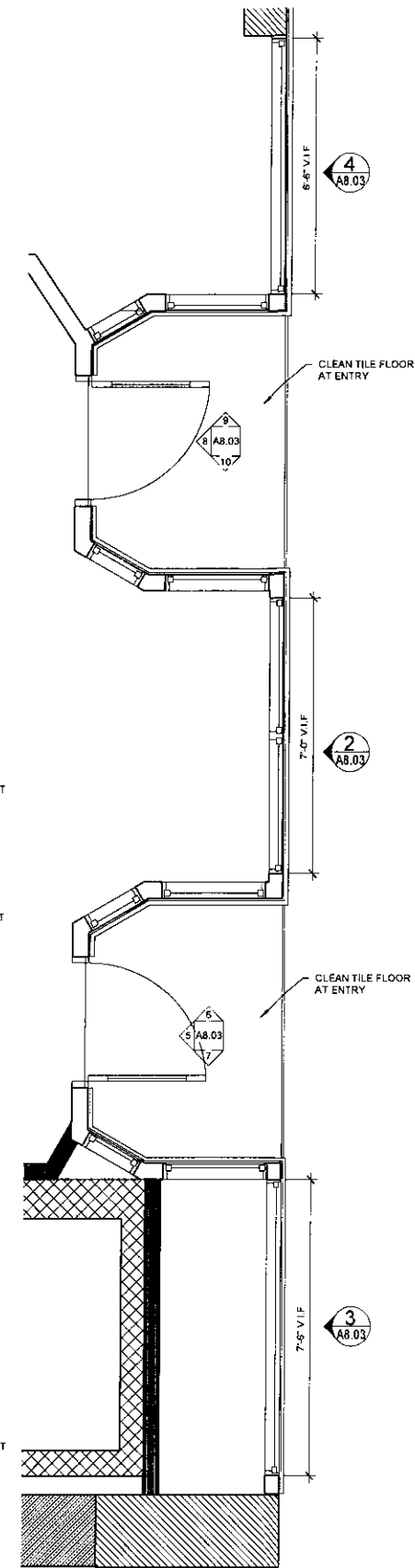
4 | STOREFRONT ELEVATION  
1/2" = 1'-0"



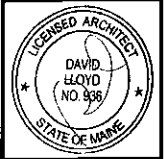
3 | STOREFRONT ELEVATION  
1/2" = 1'-0"



2 | STOREFRONT ELEVATION  
1/2" = 1'-0"



1 | ENLARGED STOREFRONT PLAN  
1/2" = 1'-0"



Prepared For:  
**Johnson Hall**

Consultant:

**ARCHETYPE  
ARCHITECTS**

48 Union Wharf  
Portland, ME 04101

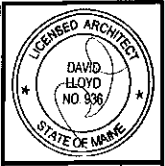
Project:  
**JOHNSON HALL**

280 Water Street  
Gardiner, Maine

Revisions:

Date: 11 MAR 2022  
Scale: 1/2" = 1'-0"  
**STOREFRONT  
SCHEDULE**

**A8.03**



Prepared For:  
**Johnson Hall**

Consultant:

Architect:  
**ARCHETYPE ARCHITECTS**

48 Union Wharf  
Portland, ME 04101

Project:  
**JOHNSON HALL**

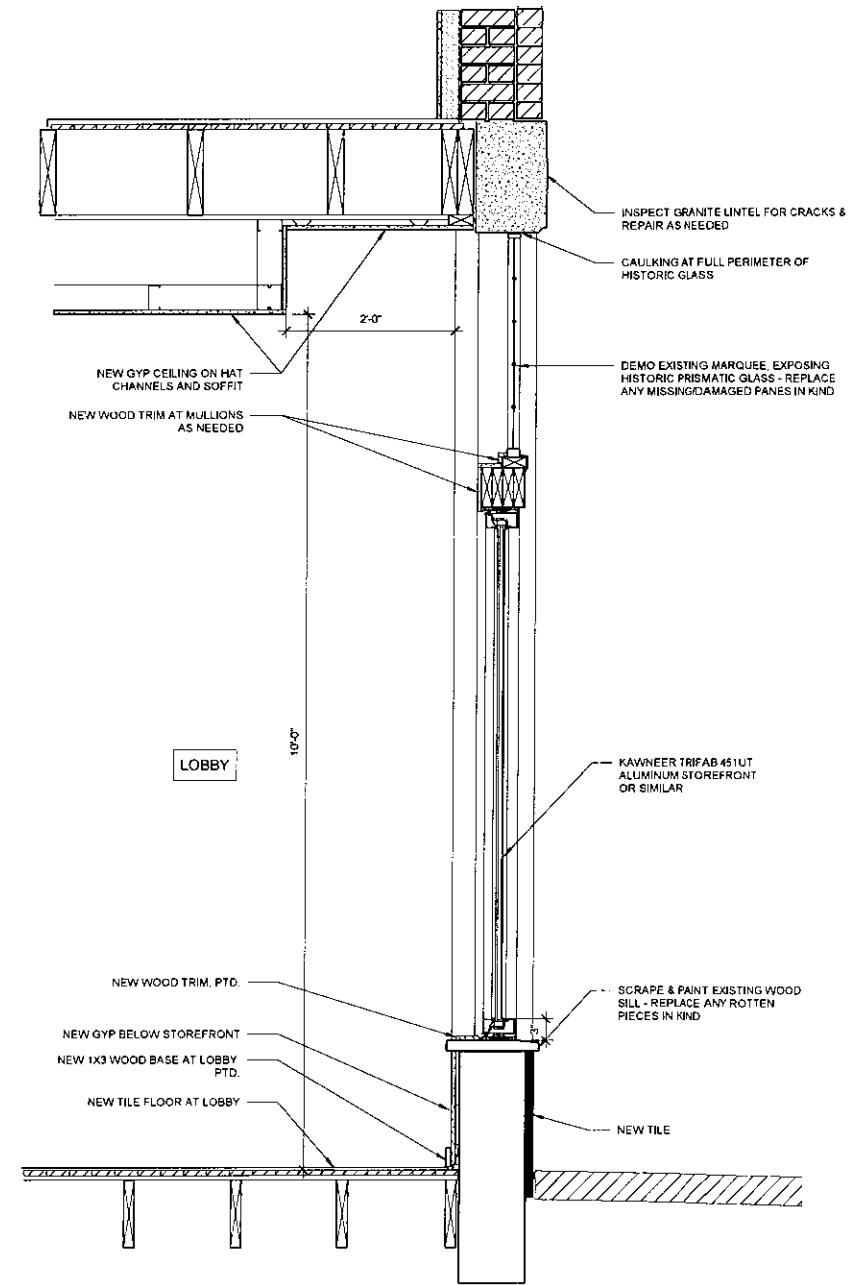
280 Water Street  
Gardiner, Maine

Revisions:

Date: 11 MAR 2022  
Scale: 1" = 1'-0"

**STOREFRONT DETAILS**

**A8.04**



**1 | STOREFRONT SECTION**  
1" = 1'-0"

OPERA HOUSE

DRE

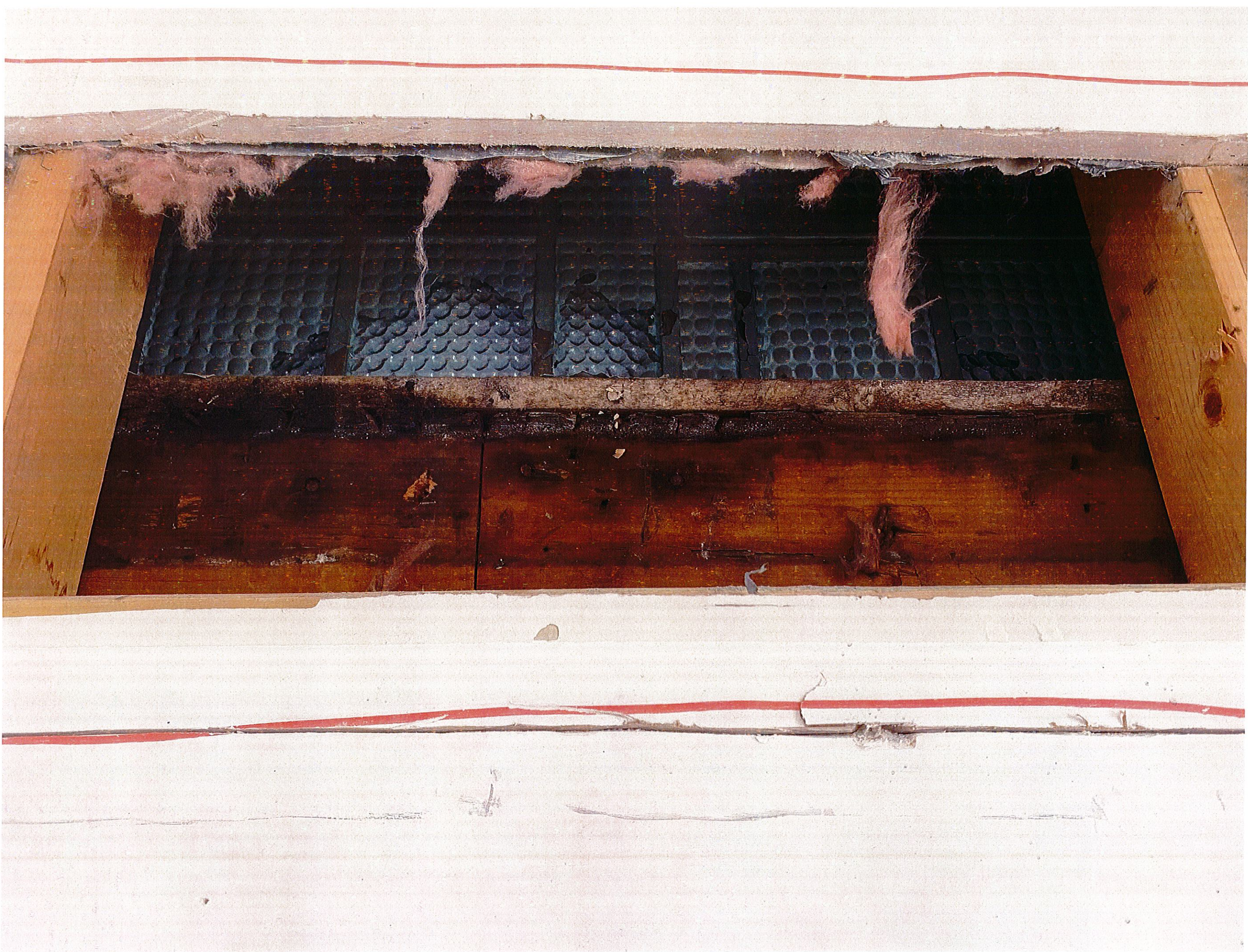
DEPA  
ST

W.T. GR







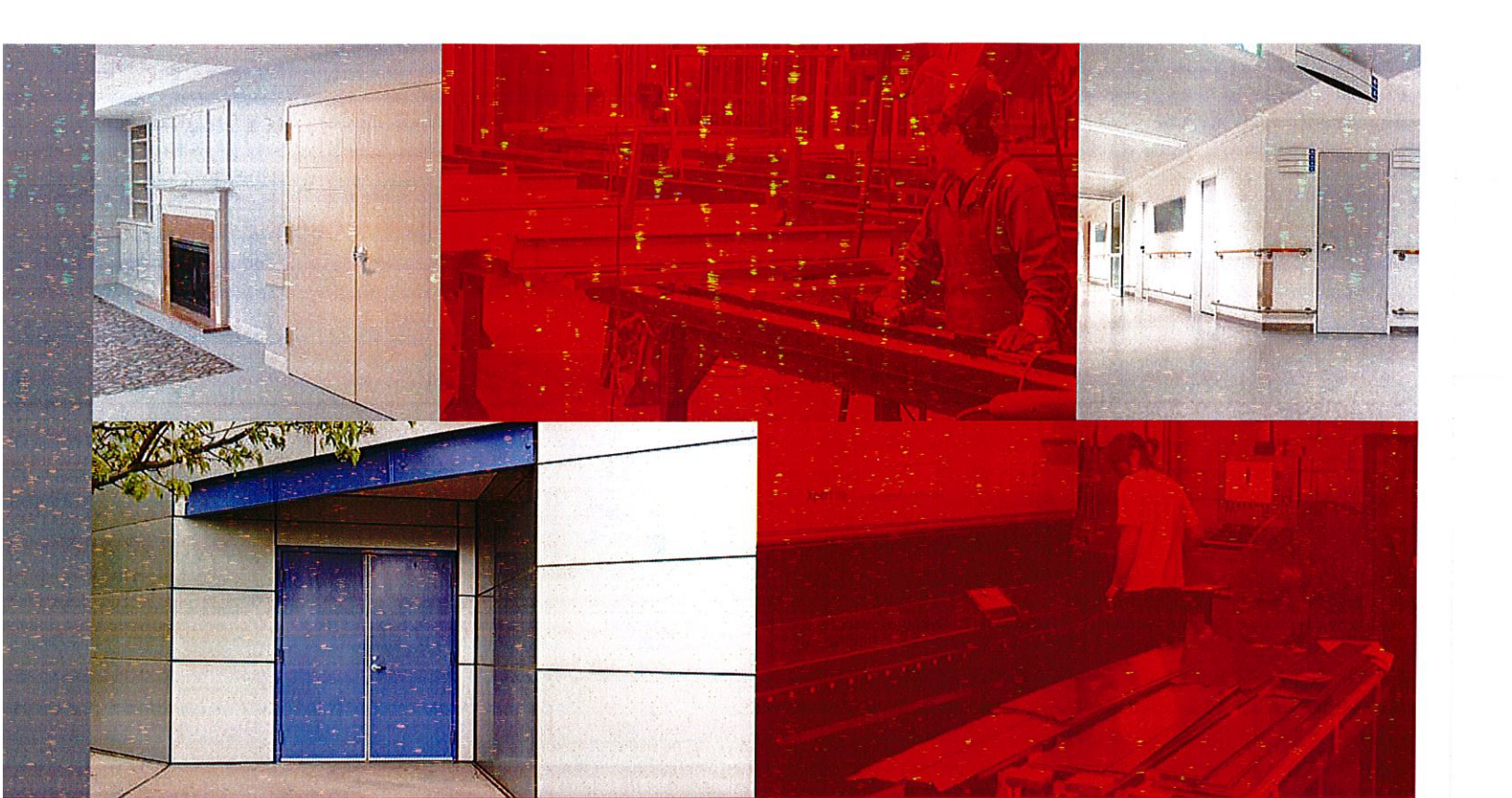








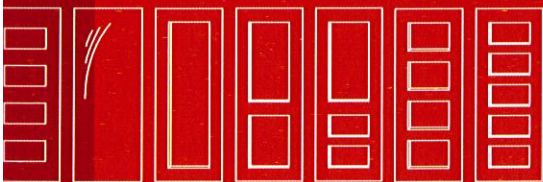
341



---

# DESIGN AND MANUFACTURING OF STEEL DOORS AND FRAMES

---



[delafontaine.com](http://delafontaine.com)



**DE LA  
FONTAINE**  
Imagine. We realize.

## FIRE RATING

The basic requirements and limitations regarding DE LA FONTAINE fire doors and frames are defined by the National Fire Protection Association, NFPA 80 (Standard for Fire Doors and Other Opening Protectives).

**Our products also comply with the following standards:**

- **UL 10C** (Standard Positive Pressure Fire Tests of Door Assemblies)
- **NFPA 252** (Standard Methods of Fire Tests of Door Assemblies)
- **NFPA 257** (Standard on Fire Test of Window and Glass Block Assemblies)
- **BS-476-22 British Standard** (Fire Resistance Test to Building Material - Non loadbearing elements)

Because the DE LA FONTAINE team is dedicated to innovation and new product development, we purchased our own testing facility. Once product development is complete, we perform a final test at Intertek Testing Services (ITS/Warnock Hersey) to receive their approval and obtain listing, labeling, and follow-up services for the fire-rated products we manufacture<sup>1</sup>.

<sup>1</sup> For additional information on fire-rated doors and frames manufactured by DE LA FONTAINE, visit our website or contact your sales representative or our customer service team.



## ECOLOGICAL RESPONSIBILITY

DE LA FONTAINE has adopted ecological principles aimed to consume less, pollute little and recycle more. Here are some examples of our commitments:

- LEED-NC version 3.0 MR Credit 4.1 Certification (Leadership in Energy and Environmental Design)
- 100% recycling of steel waste
- Recycling of production waste
- Recycling of wood transport pallets

## PRIMER AND PAINT

Our galvanized steel is suitable for immediate painting, although we also offer water-borne primed products and factory prefinished products using a durable powder-coating process.

### PRIMER

- Our primer improves protection against humidity and corrosion and can be covered with any type of coating.
- Water-borne, it complies with current environmental standards due to its low VOC content.
- > **Our primer exceeds ANSI standard A250.10 (Test Procedures and Acceptance Criteria for Factory Applied Finish Painted on Steel Surfaces for Steel Doors and Frames).**

### PAINT

- Powder-coated paint is available for many of our products. Our standard color palette includes several colors and can be complemented by custom colors as needed. Please consult our "Paint" technical data sheet on our website for more information.
- Powder-coated paint:
  - Offers durability and a quality finish
  - Reduces coordination on jobsite
  - Does not contain any solvents or VOCs (volatile organic compounds)
- > **Exceeds ANSI standard A250.3 (Test Procedures and Acceptance Criteria for Factory Applied Finish Painted on Steel Surfaces for Steel Doors and Frames).**

## RECYCLED CONTENT

The total recycled content of our **galvanized steel** is approximately 89.7%.

This includes:

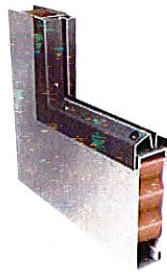
- A total post-consumer content of 50.6%
- A total post-industrial content of 33.3%
- The remaining 5.8% is comprised of home scrap.

The total recycled content of our **stainless steel** is over 85%. However, the mill makes no distinction as to the origin of the scrap.

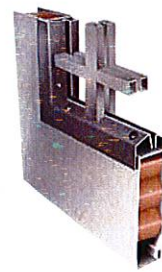
# DOOR OPTIONS: VISION KITS AND LOUVERS



**Standard two-part sandwich-type louver**, inverted "Y" blades, welded corners, 50% free-flow area, 18-gauge (0.044"/1.1 mm). Available in CRS, A40, A60 material and fire rated.



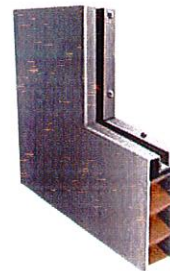
**Standard two-part sandwich-type vision kit, welded corner sections**, 18-gauge (0.044"/1.1 mm). Available for 1/4" (6.3 mm) to 1" (25.4 mm) thick glass (N series).



**Two-part sandwich-type vision kit with muntins**, 18-gauge (0.044"/1.1 mm). Only available non-rated and for 1/4" (6.3 mm) and 1/2" (12.7 mm) thick glass.



**DLF flush vision kit**, 16-gauge (0.056"/1.4 mm). Spot welded, available for 1/4" (6.3 mm) to 1" (25.4 mm) thick glass (P series).



**DLF flush seamless vision kit**, 16-gauge (0.056"/1.4 mm). Spot welded, available for 1/4" (6.3 mm) to 1" (25.4 mm) thick glass (O series).

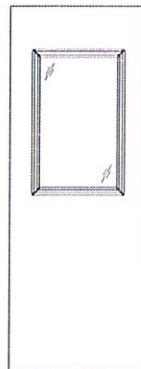
## TYPICAL DOOR ELEVATIONS

Multiple sizes and combinations available with different door series or door models. Please consult factory for additional information.

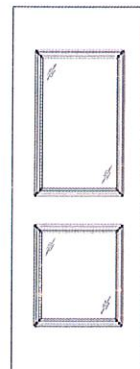
We recommend keeping 7" (178 mm) stiles and 8" (203 mm) top rail to avoid any hardware conflicts.



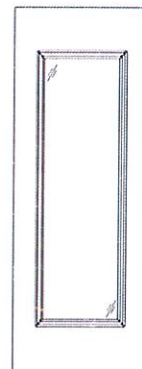
**NL:**  
Narrow lite



**HG:**  
Half glass



**2G:**  
Double  
half glass



**FG:**  
Full glass

# Wall Director

## FEATURES

- -5° to +10° tilt adjustment
- High performance optics deliver up to 7,500 lumens
- up or down mountable without modification
- Programmable occupancy sensor (dimming)
- NX and SiteSync wireless controls
- 130+ lumens per watt
- UL/cUL listed for wet locations, IP66 Listed



## CONTROL TECHNOLOGY



## SPECIFICATIONS

### CONSTRUCTION

- Optical housing is a one-piece, die-cast low copper (<0.6%) aluminum alloy with integral heat sink. The housing rotates against mounting arm housing to provide -5° to 10° of adjustment with degree markers label. At 0° adjustment, lens is totally concealed from view above horizontal with fixture mounted in the downward position.
- Mounting arm housing is one-piece die-cast, low copper (<0.6%) aluminum alloy with provisions for tilt mechanism. Mounting arm fastens to the mounting plate with keyhole slots freeing both hands for securing and wiring. One stainless steel socket-head screw on the tilt mechanism frees the optical housing to rotate for aiming. Tightening the screws locks the housing and lens frame together with sealing provided by a silicone gasket. For visual aiming, adjustment may be accomplished with the fixture on.
- Lens Frame is a one-piece, die-cast low copper (<0.6%) aluminum alloy with integral cooling fins to dissipate driver thermal.
- Bracketry and hardware shall be stainless steel.
- Finish: fade and abrasion resistant, electrostatically applied, thermally cured, triglycidal isocyanurate (TGIC) polyester powdercoat

### OPTICS

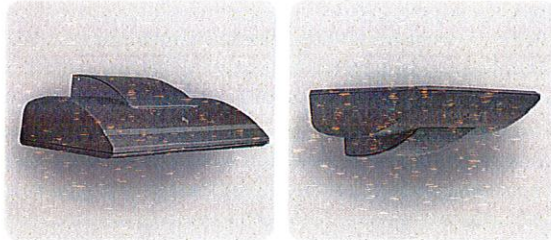
- LEDs mount to a metal printed circuit board assembly (MCPCB).
- Optical lenses are clear injection molded PMMA acrylic.
- Secondary lens is impact resistant 1/8" tempered glass with anti-reflective coating.

### INSTALLATION

- Junction box (by others): Standard with steel, quick-mount junction box plate that mounts directly to 4" J-Box.
- Mounting plate is stainless steel and features a one-piece EPDM gasket on back side of plate to firmly seal fixture to wall surface, forbidding entry of moisture and particulates.
- Fixtures must be grounded in accordance with national, state and/or local electrical codes. Failure to do so may result in serious personal injury.

### SERVICING

- Housing should hang freely in an open service position for inspection of primary wire connections. Once in service position, the housing can be removed for service by sliding the assembly to the left (for down mounting) or to the right (for up mounting) and disconnecting the wiring plugs.
- Driver assembly shall be mounted to a prewired internal tray with quick disconnects for removal.



Wall Director Small

## RELATED PRODUCTS

[Wall Director Medium](#)

### ELECTRICAL

- Universal voltage, 120 through 277V with a ±10% tolerance. Driver is Underwriters Laboratories listed.
- High voltage configurations, 347/480. Driver has a 0-10V dimming interface for multi-level illumination options. Driver is Underwriters Laboratories listed.
- "Thermal Shield", secondary side, thermistor provides protection for the sustainable life of LED module and electronic components
- Drivers shall have greater than a 0.9 power factor, less than 20% harmonic distortion, and be suitable for operation in -40°C to 40°C ambient environments
- Luminaire shall be capable of operating at 100% brightness in a 40°C environment. Both driver and optical array have integral thermal protection that will dim the luminaire upon detection of temperatures in excess of 85°C
- Modular wiring harness in the service area provides user access to the dimming circuitry
- Optional factory programmed dimming profile
- Surge protection: 10,000k in parallel, 20,000k in series
- Wiring: No. 18AWM rated 90°C, wet rating.

(Specifications continued on page 3)

KEY DATA	
Lumen Range	2,855–8,567
Wattage Range	29–74
Efficacy Range (LPW)	89–129
Reported Life (Hours)	L70/60,000
Weight	20 lbs/9.07 kg

PHOTOMETRY

BROCHURE

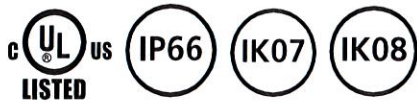
Delivered Lumens

Dimensional Drawings

intent

**FEATURES**

- Architectural linear product for wall and ground mounting applications such as sign lighting, wall washing, wall grazing, and building accent lighting
- Linear run capabilities for even, uniform light distribution with no scalloping effect
- Lumen range from 2,803 to 15,162 lm
- UL/cUL listed for wet locations, IP66 and 3G vibration rated



**CONTROL TECHNOLOGY**



**SPECIFICATIONS**

**CONSTRUCTION**

- Extruded housing, low copper (<0.1% Cu) Aluminum Alloy 6063-T6 and .160" minimum wall thickness.
- Extrusion includes an integral visor.
- Die-cast driver compartment and end caps, low copper (<0.6% Cu) Aluminum Alloy 360 and .100" minimum wall thickness.
- LED and driver compartment rated for IP66 ingress protection.
- Finish: fade and abrasion resistant, electrostatically applied, thermally cured, triglycidal isocyanurate (TGIC) polyester powdercoat.
- Lens is impact resistant 0.157" tempered glass with anti-reflective coating.
- Lens is sealed in with Reactive Back Bedding Sealant.
- Driver compartment has a one-piece molded silicone gasket.
- All external fasteners are stainless steel.

**OPTICS**

- LEDs mount to a metal printed circuit board assembly (MCPCB).
- Optical lenses are clear injection molded PMMA acrylic.

**INSTALLATION**

- Fixtures must be grounded in accordance with national, state and/or local electrical codes. Failure to do so may result in serious personal injury

**ELECTRICAL**

- Universal voltage, 120 through 277V with a ±10% tolerance. Driver is Underwriters Laboratories listed.
- High voltage configurations, 347/480. Driver is Underwriters Laboratories listed.
- Dimming range from 10% to 100% through the use of standard 0-10V interface on the programmable driver.
- Drivers have greater than a 0.9 power factor, less than 20% harmonic distortion, and be suitable for operation in -40°C to 55°C ambient environments.
- Standard configuration has dimming leads pulled off the fixture.
- Optional factory programmed dimming profile.
- "Thermal Shield", secondary side, thermistor provides protection for the sustainable life of LED module and electronic components.
- Luminaire capable of operating at 100% brightness in a 40°C environment. Both driver and optical array have integral thermal protection that will dim the luminaire upon detection of temperatures in excess of 85°C.
- Surge protection: 20,000A in series.
- SF for 120, 277, 347 Line Volts, DF for 208, 240, 480 Line Volts.
- Wiring: No. 18AWM rated 150°C.
- External cable connections are IP68 rated

**CERTIFICATIONS AND LISTINGS.**

- Listed to UL1598 and CSA C22.2#250.0-24 for wet locations and 40°C ambient temperatures.
- IP66 certified.
- RoHS compliant.
- ANSI C136.31-2010 Vibration tested and compliant 3G
- IEC 66262 Mechanical Impact Code IK07 three and four foot fixture
- IEC 66262 Mechanical Impact Code IK08 two foot fixture

**WARRANTY**

- 5 year warranty.
- See [HLI Standard Warranty](#) for additional information.



intent

**RELATED PRODUCTS**

- ⌘ [KFL](#)
- ⌘ [LTV8 \(RGBW\)](#)
- ⌘ [INT \(RGBW COLOR\)](#)

KEY DATA	
LUMEN RANGE	2,803-15,162
WATTAGE RANGE	28.6-123.4
EFFICACY RANGE (LPW)	94.4-135
REPORTED LIFE (HOURS)	L70/60,000

Notes:  
<sup>1</sup> IK08 two foot fixture  
<sup>2</sup> IK07 three and four foot fixtures

PHOTOMETRY  
 BROCHURE  
 DELIVERED LUMENS  
 DIMENSIONAL DRAWINGS

ABBREVIATIONS

Table with 2 columns: Abbreviation (e.g., AMP, ADJ., A.F.F.) and Full Name (e.g., AMPERE, ADJUSTABLE, ABOVE FINISHED FLOOR).

NEW WORK NOTES

- 1. THE DRAWINGS WHICH COMPREHEND THIS SET OF CONSTRUCTION DOCUMENTS ARE ADDRESSED TO THE GENERAL CONTRACTOR AND ARE CONSIDERED TO BE A SINGLE DOCUMENT...

PARTITION NOTES

- 1. FIRE AND SOUND RATED ASSEMBLIES SHALL RUN CONTINUOUS AROUND ROOMS INDICATED AND SHALL TAKE PRECEDENCE OVER ADJACENT AND/OR PERPENDICULAR WALLS...

CEILING NOTES

- 1. CONTRACTOR TO COORDINATE MOUNTING FLANGES OF ALL FIXTURES WITH CEILING TYPE TO RECEIVE FIXTURES.

EXISTING STAIR & ENTRY NOTES

- 1. WALLS: SAND AND REMOVE DAMAGED PLASTER, PARGE AND REPAIR SURFACE AS NECESSARY TO RECEIVE NEW FINISHES, PRIME AND PAINT AS NOTED IN FINISH SCHEDULE...

DEMOLITION NOTES

- 1. EXISTING & DEMOLITION PLANS ARE PROVIDED AS ASSISTANCE TO G.C. BIDDING EFFORTS AND AS A GENERAL GUIDE TO DEMOLITION WORK. DEMOLITION PLANS ARE NOT MEANT TO CONTAIN A COMPLETE DESCRIPTION OF ALL MATERIAL TO BE REMOVED...

ACOUSTICAL NOTES

- 1. ELECTRICAL AND SERVICE OUTLETS FOR ADJACENT ROOMS ARE TO BE POSITIONED A MINIMUM OF 2 FEET APART AND IN SEPARATE STUD CAVITIES.

Vertical sidebar containing project information: Date (11 MAR 2022), Scale (1/4" = 1'-0"), Project Name (JOHNSON HALL), Architect (ARCHETYPE ARCHITECTS), Consultant (JOHNSON HALL), and Revisions.

GN1