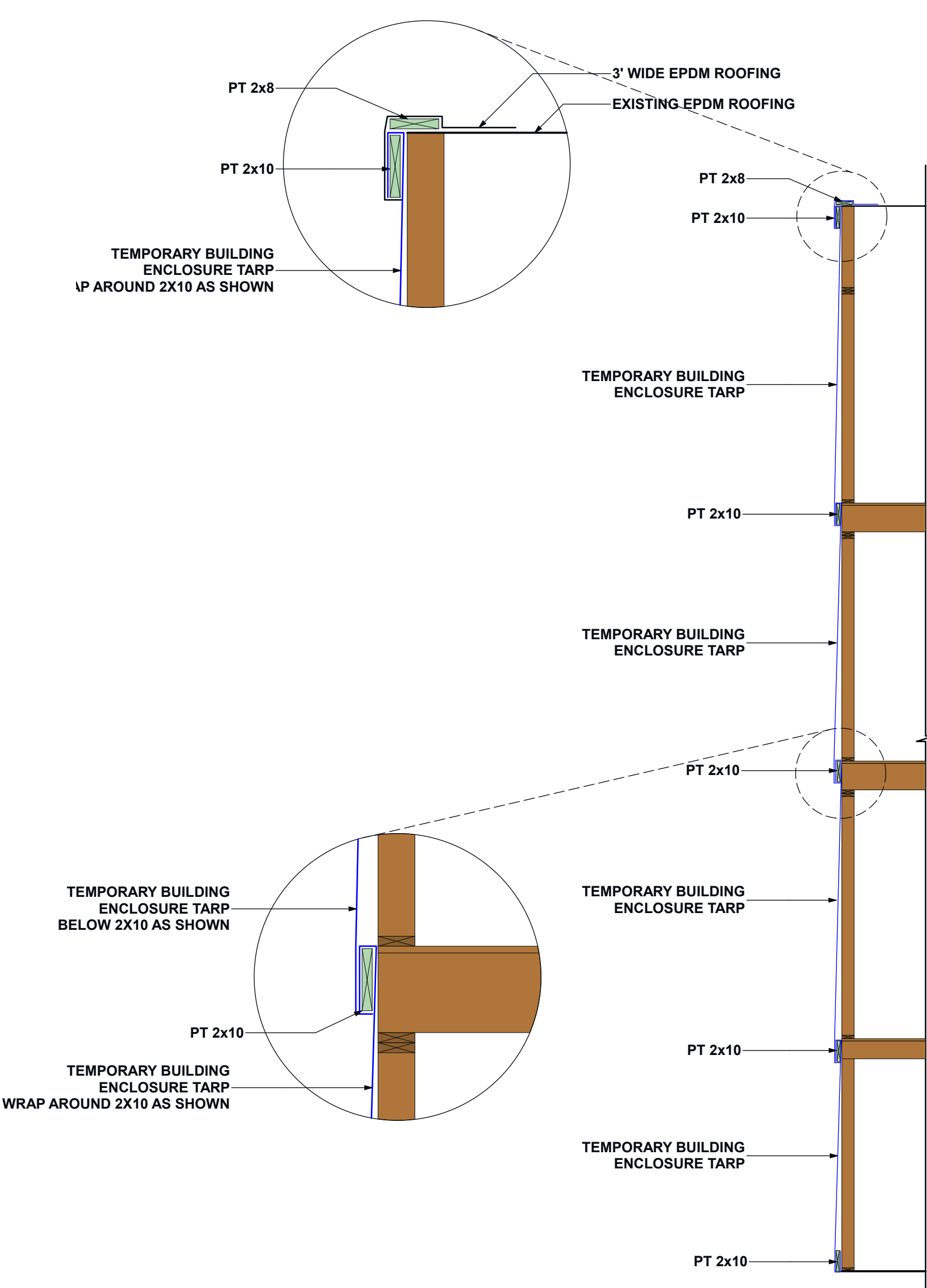
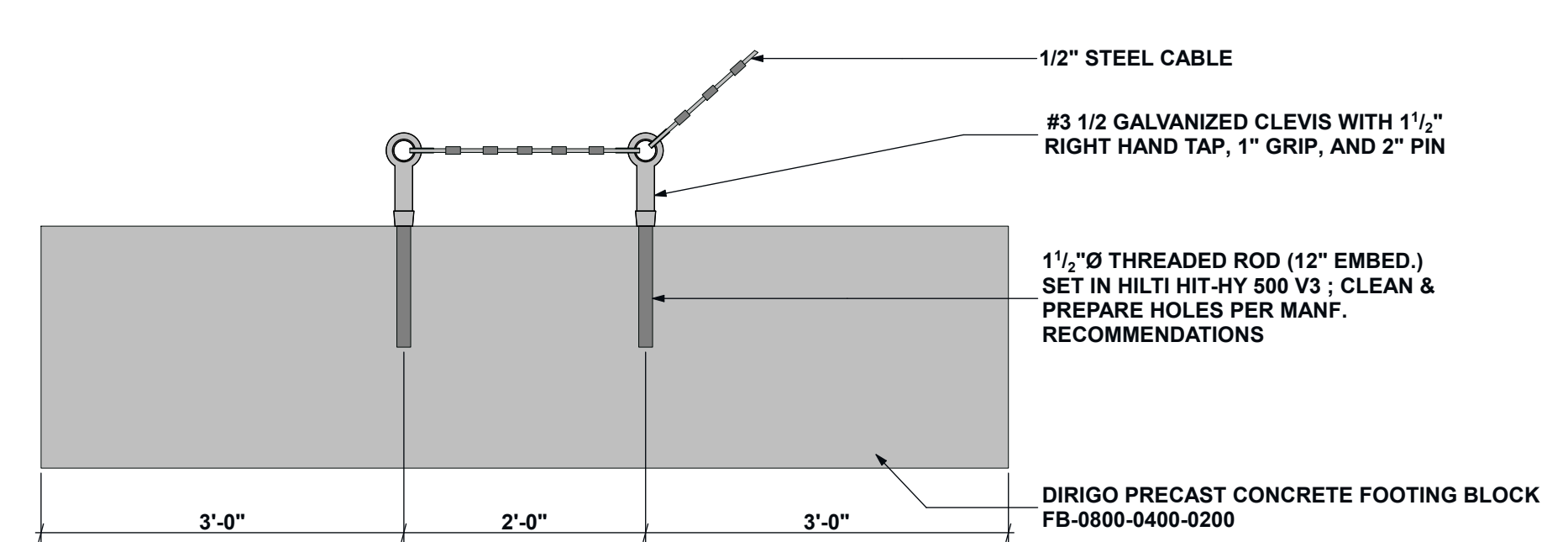


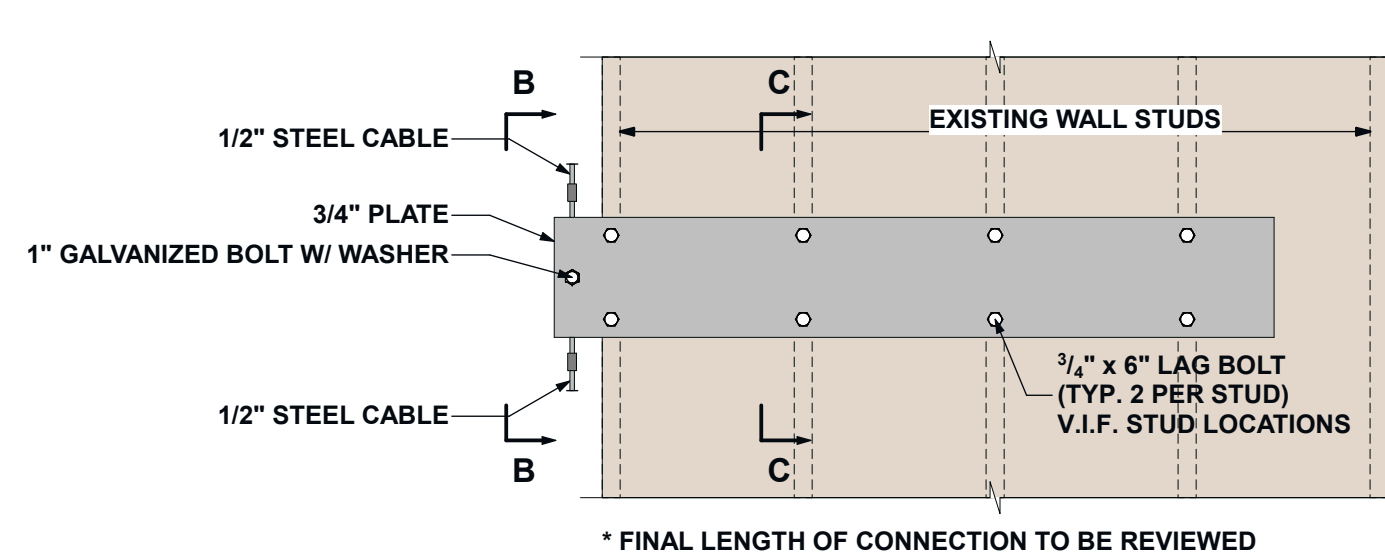
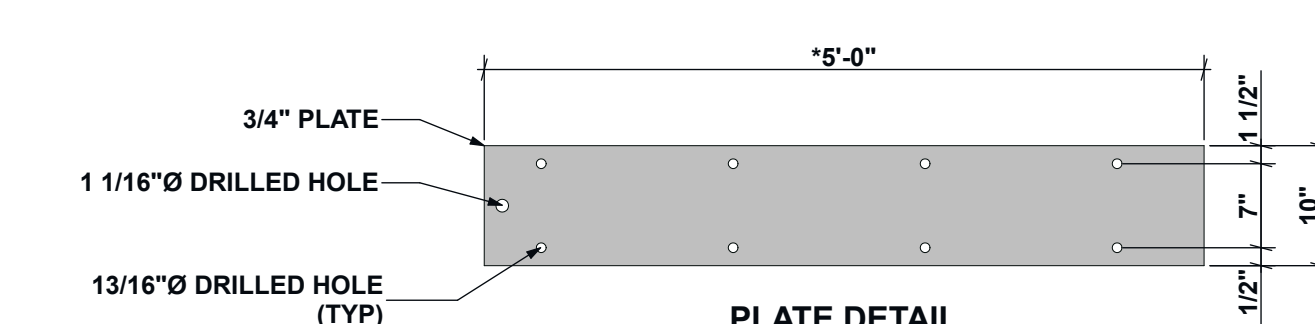
EXPOSED "EXTERIOR" WALL ELEVATION 1
SCALE: 1/4" = 1'-0" S100



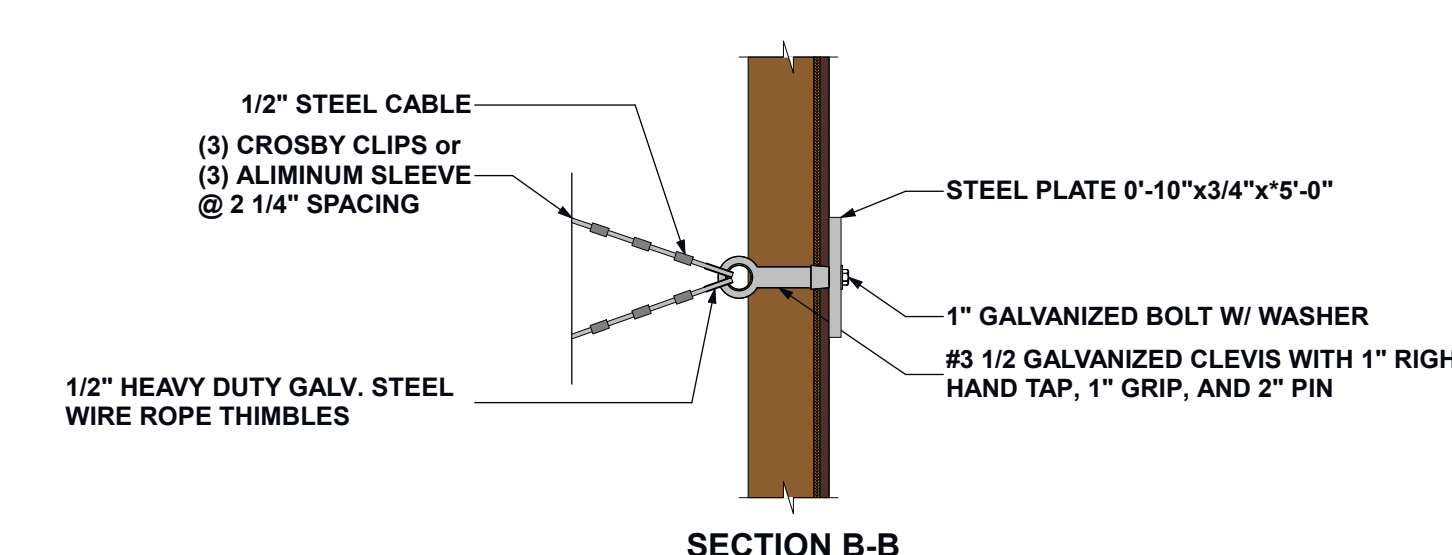
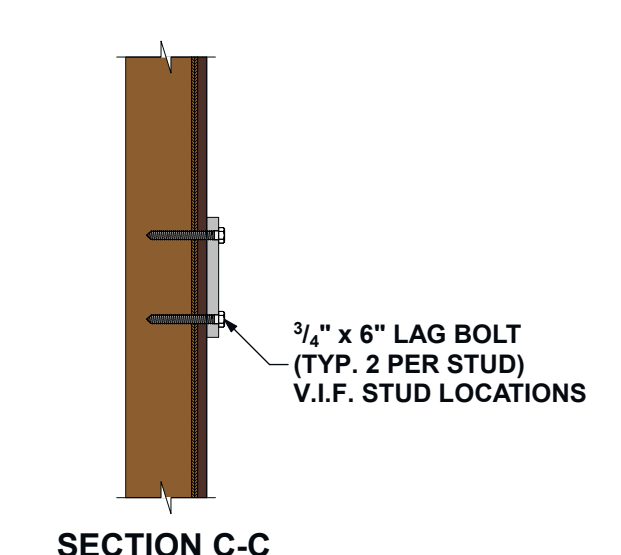
SECTION A-A 2
SCALE: 1/4" = 1'-0" S100



DUNNAGE BLOCK DETAIL 3
SCALE: 3/4" = 1'-0" S100



CABLE PLATE CONNECTION DETAIL 4
SCALE: 3/4" = 1'-0" S100



PROJECT
ROW BLOCK
GARDINER HISTORIC DISTRICT
INVENTORY NUMBER 19

235 WATER STREET
GARDINER, ME 04345

OWNER

DAVID L. COULOMBE

2527 NORTH BELFAST AVE.
AUGUSTA, ME 04330

CLIENT

CITY OF GARDINER

6 CHURCH STREET
GARDINER, ME 04345

WENTWORTH PARTNERS & ASSOCIATES
A Maine Corporation
31 COMMERCIAL STREET
SKOWHEGAN, ME 04976
V: 207.858.8010
F: 978.462.5822
www.wpa-design.com
A Gold Standard Company

ENGINEER'S CERTIFICATION
STATE OF MAINE
STEVEN C. GOVONI
No. 13428
LICENSED PROFESSIONAL ENGINEER
12APR23

PROJECT NO: 195-21
DRAWN BY: JJC
CHECKED BY: SCG

SUBMITTALS		
REV.	DATE	DESCRIPTION
0	12APR23	ISSUED FOR DEMOLITION
A	11APR23	ISSUED FOR DOCUMENTATION

THIS DOCUMENT IS THE CREATION, DESIGN, PROPERTY AND COPYRIGHTED WORK OF WENTWORTH PARTNERS & ASSOCIATES INC. ANY DUPLICATION OR USE WITHOUT EXPRESS WRITTEN CONSENT IS STRICTLY PROHIBITED. DUPLICATION AND USE BY GOVERNMENT AGENCIES FOR THE PURPOSES OF CONDUCTING THEIR LAWFULLY AUTHORIZED REGULATORY AND ADMINISTRATIVE FUNCTIONS IS SPECIFICALLY ALLOWED.

PROJECT TYPE
BUILDING EVALUATION

SHEET TITLE
CABLE BRACING AND TEMPORARY WALL COVERING

SHEET NUMBER
S100